



PFAAP5 Polyclonal Antibody

| | |
|----------------------------------|---|
| Catalog No | BYab-02748 |
| Isotype | IgG |
| Reactivity | Human;Mouse |
| Applications | WB;ELISA;IHC |
| Gene Name | N4BP2L2 |
| Protein Name | NEDD4-binding protein 2-like 2 |
| Immunogen | The antiserum was produced against synthesized peptide derived from human N4BP2L2. AA range:358-407 |
| Specificity | PFAAP5 Polyclonal Antibody detects endogenous levels of PFAAP5 protein. |
| Formulation | Liquid in PBS containing 50% glycerol, 0.5% BSA and 0.02% sodium azide. |
| Source | Polyclonal, Rabbit,IgG |
| Purification | The antibody was affinity-purified from rabbit antiserum by affinity-chromatography using epitope-specific immunogen. |
| Dilution | WB 1:500-2000;IHC-p 1:50-300; ELISA 2000-20000 |
| Concentration | 1 mg/ml |
| Purity | ≥90% |
| Storage Stability | -20°C/1 year |
| Synonyms | N4BP2L2; CG005; PFAAP5; NEDD4-binding protein 2-like 2; Phosphonoformate immuno-associated protein 5 |
| Observed Band | 67kD |
| Cell Pathway | nucleus,transcriptional repressor complex,extracellular exosome, |
| Tissue Specificity | Colon,Thalamus, |
| Function | PTM:Phosphorylated upon DNA damage, probably by ATM or ATR., |
| Background | PTM:Phosphorylated upon DNA damage, probably by ATM or ATR., |
| matters needing attention | Avoid repeated freezing and thawing! |

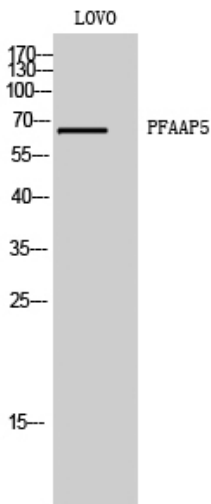
Nanjing BYabscience technology Co.,Ltd



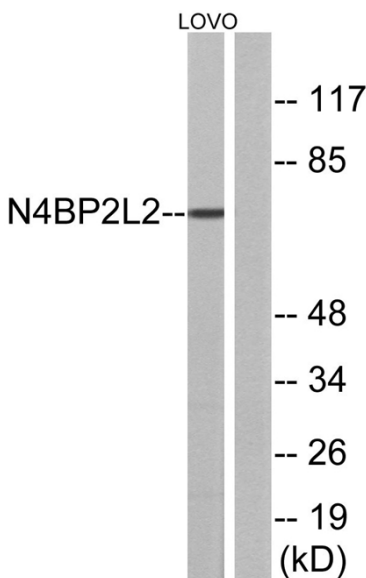
Usage suggestions

This product can be used in immunological reaction related experiments. For more information, please consult technical personnel.

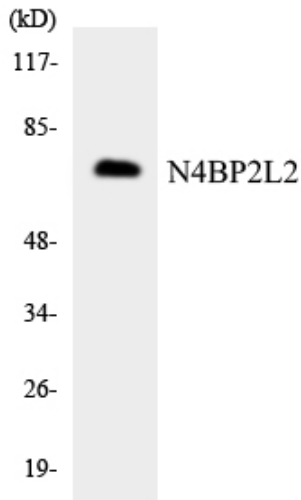
Products Images



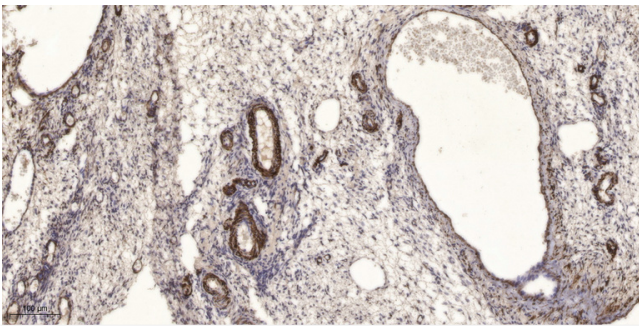
Western Blot analysis of LOVO cells using PFAAP5 Polyclonal Antibody



Western blot analysis of lysates from LOVO cells, using N4BP2L2 Antibody. The lane on the right is blocked with the synthesized peptide.



Western blot analysis of the lysates from K562 cells using N4BP2L2 antibody.



Immunohistochemical analysis of paraffin-embedded human oophoroma. 1, Antibody was diluted at 1:200(4° overnight). 2, Tris-EDTA,pH9.0 was used for antigen retrieval. 3,Secondary antibody was diluted at 1:200(room temperature, 45min).