



Pepsin A Polyclonal Antibody

Catalog No	BYab-02746
Isotype	IgG
Reactivity	Human;Rat;Mouse;
Applications	WB;IHC;IF;ELISA
Gene Name	PGA3/PGA4/PGA5
Protein Name	Pepsin A
Immunogen	The antiserum was produced against synthesized peptide derived from human Pepsin A. AA range:258-307
Specificity	Pepsin A Polyclonal Antibody detects endogenous levels of Pepsin A protein.
Formulation	Liquid in PBS containing 50% glycerol, 0.5% BSA and 0.02% sodium azide.
Source	Polyclonal, Rabbit,IgG
Purification	The antibody was affinity-purified from rabbit antiserum by affinity-chromatography using epitope-specific immunogen.
Dilution	WB: 1/500 - 1/2000. IHC: 1/100 - 1/300. ELISA: 1/10000.. IF 1:50-200
Concentration	1 mg/ml
Purity	≥90%
Storage Stability	-20°C/1 year
Synonyms	Pepsin A; PGA3; PGA4; PGA5
Observed Band	42kD
Cell Pathway	extracellular exosome,multivesicular body lumen,
Tissue Specificity	Brain,Colon,Kidney,Placenta,Skeletal muscle,
Function	catalytic activity:Preferential cleavage: hydrophobic, preferably aromatic, residues in P1 and P1' positions. Cleaves 1-Phe- -Val-2, 4-Gln- -His-5, 13-Glu- -Ala-14, 14-Ala- -Leu-15, 15-Leu- -Tyr-16, 16-Tyr- -Leu-17, 23-Gly- -Phe-24, 24-Phe- -Phe-25 and 25-Phe- -Tyr-26 bonds in the B chain of insulin.,function:Shows particularly broad specificity; although bonds involving phenylalanine and leucine are preferred, many others are also cleaved to some extent.,similarity:Belongs to the peptidase A1 family.,
Background	This gene encodes a protein precursor of the digestive enzyme pepsin, a member of the peptidase A1 family of endopeptidases. The encoded precursor is secreted by gastric chief cells and undergoes autocatalytic cleavage in acidic

Nanjing BYabscience technology Co.,Ltd



conditions to form the active enzyme, which functions in the digestion of dietary proteins. This gene is found in a cluster of related genes on chromosome 11, each of which encodes one of multiple pepsinogens. Pepsinogen levels in serum may serve as a biomarker for atrophic gastritis and gastric cancer. [provided by RefSeq, Jul 2015],

matters needing attention

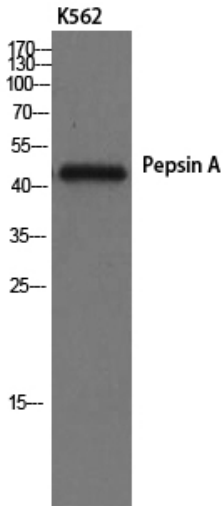
Avoid repeated freezing and thawing!

Usage suggestions

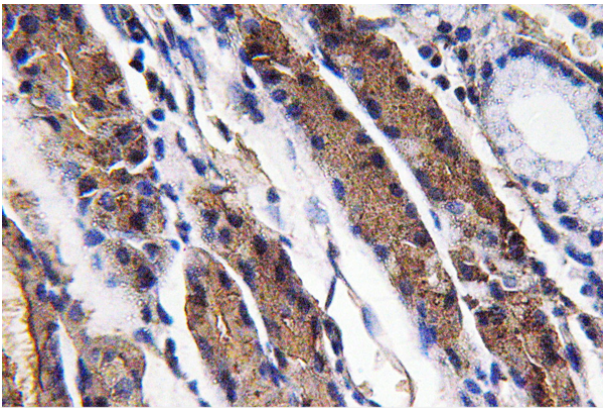
This product can be used in immunological reaction related experiments. For more information, please consult technical personnel.



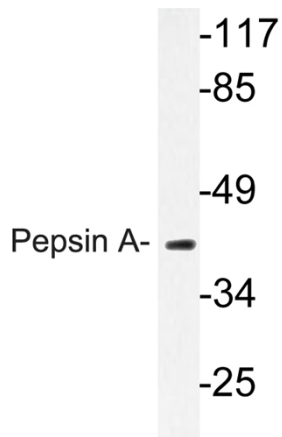
Products Images



Western Blot analysis of K562 cells using Pepsin A Polyclonal Antibody



Immunohistochemistry analysis of Pepsin A antibody in paraffin-embedded human lung carcinoma tissue.



Western blot analysis of lysate from K562 cells, using Pepsin A antibody.