



PDE4C Polyclonal Antibody

Catalog No	BYab-02741
Isotype	IgG
Reactivity	Human;Mouse;Rat
Applications	WB;ELISA;IHC
Gene Name	PDE4C
Protein Name	cAMP-specific 3',5'-cyclic phosphodiesterase 4C
Immunogen	The antiserum was produced against synthesized peptide derived from human PDE4C. AA range:291-340
Specificity	PDE4C Polyclonal Antibody detects endogenous levels of PDE4C protein.
Formulation	Liquid in PBS containing 50% glycerol, 0.5% BSA and 0.02% sodium azide.
Source	Polyclonal, Rabbit,IgG
Purification	The antibody was affinity-purified from rabbit antiserum by affinity-chromatography using epitope-specific immunogen.
Dilution	WB 1:500-2000;IHC-p 1:50-300; ELISA 2000-20000
Concentration	1 mg/ml
Purity	≥90%
Storage Stability	-20°C/1 year
Synonyms	PDE4C; DPDE1; cAMP-specific 3'; 5'-cyclic phosphodiesterase 4C; DPDE1; PDE21
Observed Band	80kD
Cell Pathway	Cell projection, cilium .
Tissue Specificity	Expressed in various tissues but not in cells of the immune system.
Function	catalytic activity:Adenosine 3',5'-cyclic phosphate + H(2)O = adenosine 5'-phosphate.,enzyme regulation:Inhibited by rolipram.,pathway:Purine metabolism; cAMP degradation; AMP from cAMP: step 1/1.,similarity:Belongs to the cyclic nucleotide phosphodiesterase family.,tissue specificity:Expressed in various tissues but not in cells of the immune system.,
Background	The protein encoded by this gene belongs to the cyclic nucleotide phosphodiesterase (PDE) family, and PDE4 subfamily. This PDE hydrolyzes the second messenger, cAMP, which is a regulator and mediator of a number of cellular responses to extracellular signals. Thus, by regulating the cellular concentration of cAMP, this protein plays a key role in many important

Nanjing BYabscience technology Co.,Ltd



physiological processes. Alternatively spliced transcript variants encoding different isoforms have been described for this gene.[provided by RefSeq, Jul 2011],

matters needing attention

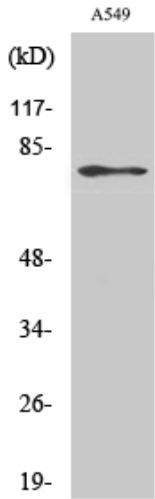
Avoid repeated freezing and thawing!

Usage suggestions

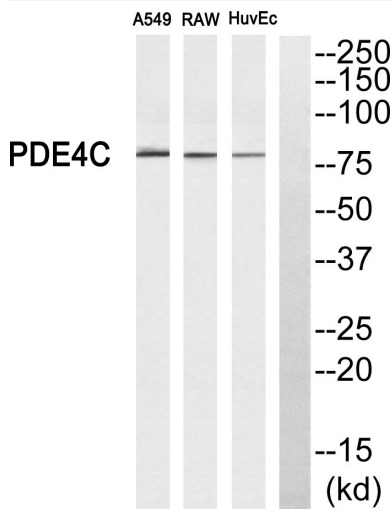
This product can be used in immunological reaction related experiments. For more information, please consult technical personnel.



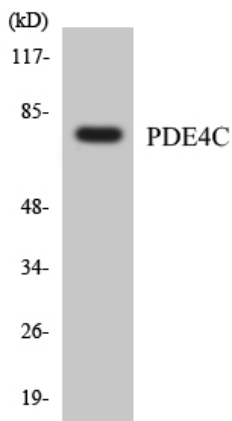
Products Images



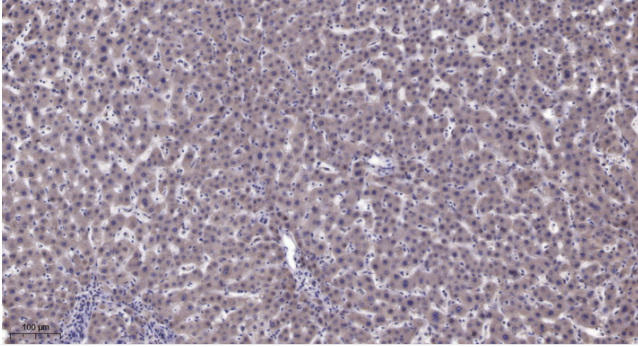
Western Blot analysis of various cells using PDE4C Polyclonal Antibody



Western blot analysis of PDE4C Antibody. The lane on the right is blocked with the PDE4C peptide.



Western blot analysis of the lysates from HeLa cells using PDE4C antibody.



Immunohistochemical analysis of paraffin-embedded human liver cancer. 1, Antibody was diluted at 1:200(4° overnight). 2, Tris-EDTA,pH9.0 was used for antigen retrieval. 3,Secondary antibody was diluted at 1:200(room temperature, 45min).