



p44S10 Polyclonal Antibody

Catalog No	BYab-02730
Isotype	IgG
Reactivity	Human;Mouse;Rat
Applications	WB;IHC;IF;ELISA
Gene Name	PSMD6
Protein Name	26S proteasome non-ATPase regulatory subunit 6
Immunogen	The antiserum was produced against synthesized peptide derived from human PSMD6. AA range:201-250
Specificity	p44S10 Polyclonal Antibody detects endogenous levels of p44S10 protein.
Formulation	Liquid in PBS containing 50% glycerol, 0.5% BSA and 0.02% sodium azide.
Source	Polyclonal, Rabbit,IgG
Purification	The antibody was affinity-purified from rabbit antiserum by affinity-chromatography using epitope-specific immunogen.
Dilution	WB: 1/500 - 1/2000. IHC: 1/100 - 1/300. ELISA: 1/40000.. IF 1:50-200
Concentration	1 mg/ml
Purity	≥90%
Storage Stability	-20°C/1 year
Synonyms	PSMD6; KIAA0107; PFAAP4; 26S proteasome non-ATPase regulatory subunit 6; 26S proteasome regulatory subunit RPN7; 26S proteasome regulatory subunit S10; Breast cancer-associated protein SGA-113M; Phosphonoformate immuno-associated protein 4;
Observed Band	45kD
Cell Pathway	proteasome complex,nucleoplasm,cytosol,proteasome regulatory particle,proteasome accessory complex,extracellular exosome,
Tissue Specificity	Bone marrow,Lymph,Mammary cancer,Ovary,Placenta,Testis,
Function	function:Acts as a regulatory subunit of the 26S proteasome which is involved in the ATP-dependent degradation of ubiquitinated proteins.,similarity:Belongs to the proteasome subunit S10 family.,similarity:Contains 1 PCI domain.,subunit:Component of the PA700 complex.,
Background	This gene encodes a member of the protease subunit S10 family. The encoded protein is a subunit of the 26S proteasome which colocalizes with DNA damage

Nanjing BYabscience technology Co.,Ltd



foci and is involved in the ATP-dependent degradation of ubiquinated proteins. Alternative splicing results in multiple transcript variants [provided by RefSeq, Nov 2012],

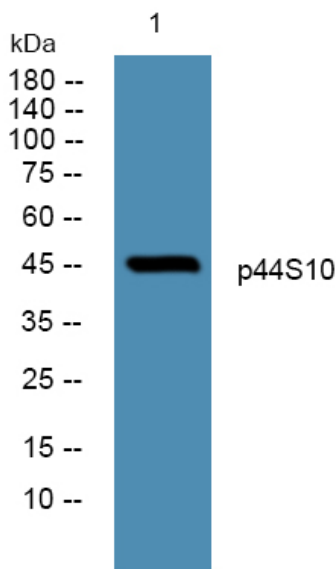
matters needing attention

Avoid repeated freezing and thawing!

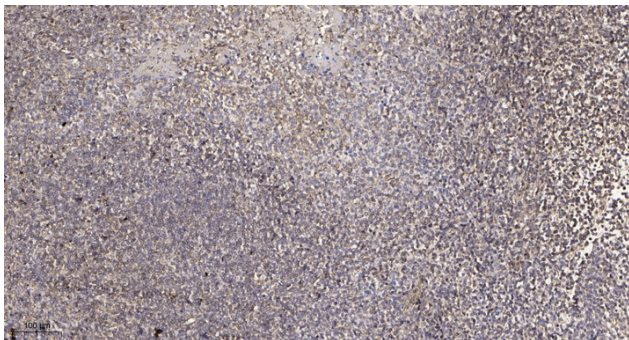
Usage suggestions

This product can be used in immunological reaction related experiments. For more information, please consult technical personnel.

Products Images



Western blot analysis of lysates from K562 cells, primary antibody was diluted at 1:1000, 4° over night



Immunohistochemical analysis of paraffin-embedded human tonsil. 1, Antibody was diluted at 1:200(4° overnight). 2, Tris-EDTA,pH9.0 was used for antigen retrieval. 3,Secondary antibody was diluted at 1:200(room temperature, 30min).