



OCT3 Polyclonal Antibody

Catalog No	BYab-02725
Isotype	IgG
Reactivity	Human;Rat;Mouse;
Applications	WB;ELISA
Gene Name	SLC22A3
Protein Name	Solute carrier family 22 member 3
Immunogen	The antiserum was produced against synthesized peptide derived from human SLC22A3. AA range:275-324
Specificity	OCT3 Polyclonal Antibody detects endogenous levels of 40819 protein.
Formulation	Liquid in PBS containing 50% glycerol, 0.5% BSA and 0.02% sodium azide.
Source	Polyclonal, Rabbit,IgG
Purification	The antibody was affinity-purified from rabbit antiserum by affinity-chromatography using epitope-specific immunogen.
Dilution	Western Blot: 1/500 - 1/2000. ELISA: 1/10000. Not yet tested in other applications.
Concentration	1 mg/ml
Purity	≥90%
Storage Stability	-20°C/1 year
Synonyms	SLC22A3; EMTH; OCT3; Solute carrier family 22 member 3; Extraneuronal monoamine transporter; EMT; Organic cation transporter 3
Observed Band	61kD
Cell Pathway	Membrane; Multi-pass membrane protein.
Tissue Specificity	Expressed in placenta, skeletal muscle, prostate, aorta, liver, fetal lung, salivary gland, adrenal gland, kidney and brain cortex. No expression detected in spleen.
Function	function:Mediates potential-dependent transport of a variety of organic cations. May play a significant role in the disposition of cationic neurotoxins and neurotransmitters in the brain.,similarity:Belongs to the major facilitator superfamily. Organic cation transporter family.,tissue specificity:Expressed in placenta, skeletal muscle, prostate, aorta, liver, fetal lung, salivary gland, adrenal gland, kidney and brain cortex. No expression detected in spleen.,
Background	Polyspecific organic cation transporters in the liver, kidney, intestine, and other organs are critical for elimination of many endogenous small organic cations as well as a wide array of drugs and environmental toxins. This gene is one of three

Nanjing BYabscience technology Co.,Ltd



similar cation transporter genes located in a cluster on chromosome 6. The encoded protein contains twelve putative transmembrane domains and is a plasma integral membrane protein. [provided by RefSeq, Jul 2008],

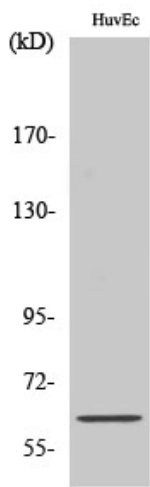
matters needing attention

Avoid repeated freezing and thawing!

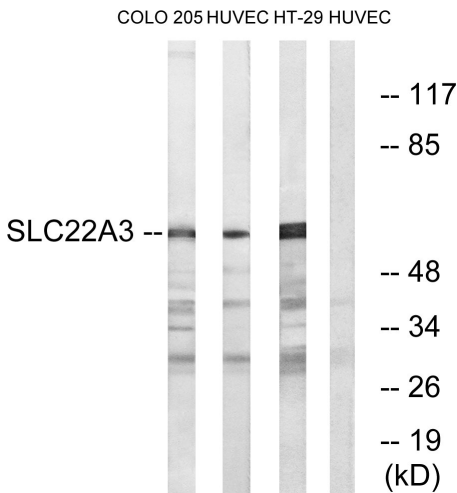
Usage suggestions

This product can be used in immunological reaction related experiments. For more information, please consult technical personnel.

Products Images



Western Blot analysis of various cells using OCT3 Polyclonal Antibody



Western blot analysis of lysates from HUVEC, COLO, and HT-29 cells, using SLC22A3 Antibody. The lane on the right is blocked with the synthesized peptide.