



NICE4 Polyclonal Antibody

Catalog No	BYab-02717
Isotype	IgG
Reactivity	Human;Mouse
Applications	WB;ELISA
Gene Name	UBAP2L
Protein Name	Ubiquitin-associated protein 2-like
Immunogen	The antiserum was produced against synthesized peptide derived from human UBAP2L. AA range:561-610
Specificity	NICE4 Polyclonal Antibody detects endogenous levels of NICE4 protein.
Formulation	Liquid in PBS containing 50% glycerol, 0.5% BSA and 0.02% sodium azide.
Source	Polyclonal, Rabbit,IgG
Purification	The antibody was affinity-purified from rabbit antiserum by affinity-chromatography using epitope-specific immunogen.
Dilution	Western Blot: 1/500 - 1/2000. ELISA: 1/20000. Not yet tested in other applications.
Concentration	1 mg/ml
Purity	≥90%
Storage Stability	-20°C/1 year
Synonyms	UBAP2L; KIAA0144; NICE4; Ubiquitin-associated protein 2-like; Protein NICE-4
Observed Band	115kD
Cell Pathway	Cytoplasm, Stress granule .
Tissue Specificity	Ubiquitous.
Function	PTM:Phosphorylated upon DNA damage, probably by ATM or ATR.,similarity:Contains 1 UBA domain.,tissue specificity:Ubiquitous.,
Background	PTM:Phosphorylated upon DNA damage, probably by ATM or ATR.,similarity:Contains 1 UBA domain.,tissue specificity:Ubiquitous.,
matters needing attention	Avoid repeated freezing and thawing!

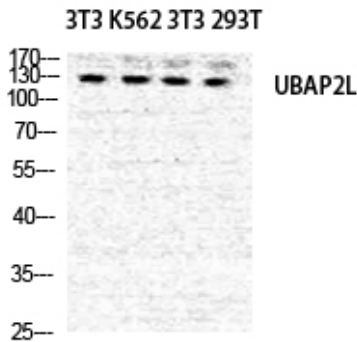
Nanjing BYabscience technology Co.,Ltd



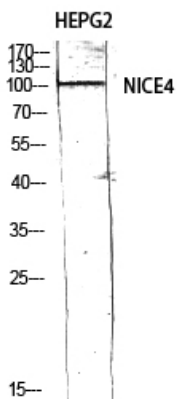
Usage suggestions

This product can be used in immunological reaction related experiments. For more information, please consult technical personnel.

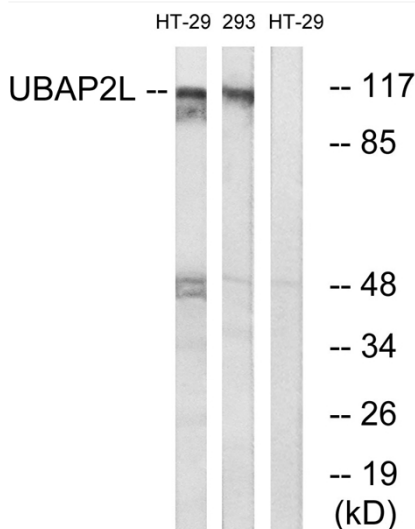
Products Images



Western Blot analysis of NIH-3T3 K562 NIH-3T3 293T cells using NICE4 Polyclonal Antibody diluted at 1:500

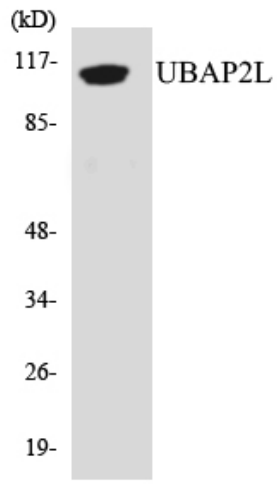


Western Blot analysis of HEPG2 using NICE4 Polyclonal Antibody diluted at 1:500



Western blot analysis of lysates from HT-29 and 293 cells, using UBAP2L Antibody. The lane on the right is blocked with the synthesized peptide.

Nanjing BYabscience technology Co.,Ltd



Western blot analysis of the lysates from Jurkat cells using UBAP2L antibody.