



NDUFS1 Polyclonal Antibody

Catalog No	BYab-02707
Isotype	IgG
Reactivity	Human;Mouse;Rat
Applications	WB;IHC;IF;ELISA
Gene Name	NDUFS1
Protein Name	NADH-ubiquinone oxidoreductase 75 kDa subunit mitochondrial
Immunogen	The antiserum was produced against synthesized peptide derived from human NDUFS1. AA range:620-669
Specificity	NDUFS1 Polyclonal Antibody detects endogenous levels of NDUFS1 protein.
Formulation	Liquid in PBS containing 50% glycerol, 0.5% BSA and 0.02% sodium azide.
Source	Polyclonal, Rabbit,IgG
Purification	The antibody was affinity-purified from rabbit antiserum by affinity-chromatography using epitope-specific immunogen.
Dilution	WB: 1/500 - 1/2000. IHC: 1/100 - 1/300. ELISA: 1/40000.. IF 1:50-200
Concentration	1 mg/ml
Purity	≥90%
Storage Stability	-20°C/1 year
Synonyms	NDUFS1; NADH-ubiquinone oxidoreductase 75 kDa subunit; mitochondrial; Complex I-75kD; CI-75kD
Observed Band	80kD
Cell Pathway	Mitochondrion inner membrane ; Peripheral membrane protein ; Matrix side .
Tissue Specificity	Brain,Cajal-Retzius cell,Colon,Fetal brain cortex,Liver,
Function	catalytic activity:NADH + acceptor = NAD(+) + reduced acceptor.,catalytic activity:NADH + ubiquinone = NAD(+) + ubiquinol.,cofactor: Binds 1 2Fe-2S cluster per subunit.,cofactor: Binds 2 4Fe-4S clusters per subunit.,disease: Defects in NDUFS1 are a cause of complex I mitochondrial respiratory chain deficiency [MIM:252010]. Complex I (NADH-ubiquinone oxidoreductase), the largest complex of the mitochondrial respiratory chain, contains more than 40 subunits. It is embedded in the inner mitochondrial membrane and is partly protruding in the matrix. Complex I deficiency is the most common cause of mitochondrial disorders. It represents largely one-third of all cases of respiratory chain deficiency and is responsible for a variety of clinical symptoms, ranging from

Nanjing BYabscience technology Co.,Ltd



neurological disorders to cardiomyopathy, liver failure, and myopathy. function:Core subunit of the mitochondrial membrane respirato

Background

The protein encoded by this gene belongs to the complex I 75 kDa subunit family. Mammalian complex I is composed of 45 different subunits. It locates at the mitochondrial inner membrane. This protein has NADH dehydrogenase activity and oxidoreductase activity. It transfers electrons from NADH to the respiratory chain. The immediate electron acceptor for the enzyme is believed to be ubiquinone. This protein is the largest subunit of complex I and it is a component of the iron-sulfur (IP) fragment of the enzyme. It may form part of the active site crevice where NADH is oxidized. Mutations in this gene are associated with complex I deficiency. Several transcript variants encoding different isoforms have been found for this gene. [provided by RefSeq, Jan 2011],

matters needing attention

Avoid repeated freezing and thawing!

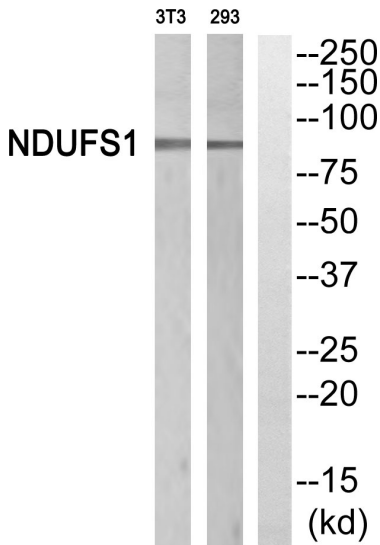
Usage suggestions

This product can be used in immunological reaction related experiments. For more information, please consult technical personnel.

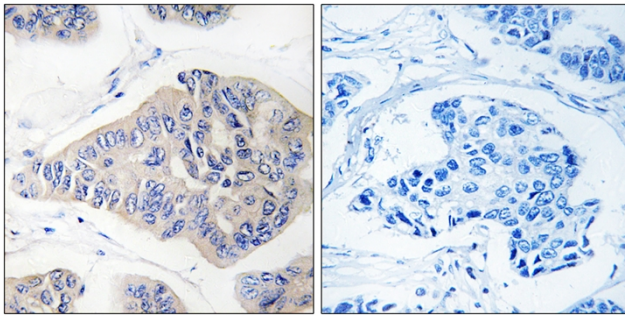
Nanjing BYabscience technology Co.,Ltd



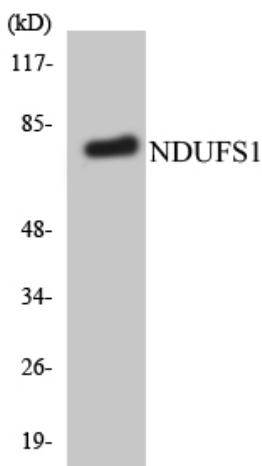
Products Images



Western blot analysis of NDUFS1 Antibody. The lane on the right is blocked with the NDUFS1 peptide.



Immunohistochemistry analysis of paraffin-embedded human breast carcinoma, using NDUFS1 Antibody. The lane on the right is blocked with the NDUFS1 peptide.



Western blot analysis of the lysates from HepG2 cells using NDUFS1 antibody.