



# NDUFB10 Polyclonal Antibody

<b>Catalog No</b>	BYab-02703
<b>Isotype</b>	IgG
<b>Reactivity</b>	Human;Rat;Mouse;
<b>Applications</b>	WB;IHC;IF;ELISA
<b>Gene Name</b>	NDUFB10
<b>Protein Name</b>	NADH dehydrogenase [ubiquinone] 1 beta subcomplex subunit 10
<b>Immunogen</b>	The antiserum was produced against synthesized peptide derived from human NDUFB10. AA range:63-112
<b>Specificity</b>	NDUFB10 Polyclonal Antibody detects endogenous levels of NDUFB10 protein.
<b>Formulation</b>	Liquid in PBS containing 50% glycerol, 0.5% BSA and 0.02% sodium azide.
<b>Source</b>	Polyclonal, Rabbit,IgG
<b>Purification</b>	The antibody was affinity-purified from rabbit antiserum by affinity-chromatography using epitope-specific immunogen.
<b>Dilution</b>	WB: 1/500 - 1/2000. IHC: 1/100 - 1/300. ELISA: 1/40000.. IF 1:50-200
<b>Concentration</b>	1 mg/ml
<b>Purity</b>	≥90%
<b>Storage Stability</b>	-20°C/1 year
<b>Synonyms</b>	NDUFB10; NADH dehydrogenase [ubiquinone] 1 beta subcomplex subunit 10; Complex I-PDSW; CI-PDSW; NADH-ubiquinone oxidoreductase PDSW subunit
<b>Observed Band</b>	24kD
<b>Cell Pathway</b>	Mitochondrion inner membrane ; Peripheral membrane protein ; Matrix side .
<b>Tissue Specificity</b>	Cerebellum,Ovary,Skeletal muscle,Skin,Umbilical cord blood,
<b>Function</b>	function:Accessory subunit of the mitochondrial membrane respiratory chain NADH dehydrogenase (Complex I), that is believed to be not involved in catalysis. Complex I functions in the transfer of electrons from NADH to the respiratory chain. The immediate electron acceptor for the enzyme is believed to be ubiquinone.,similarity:Belongs to the complex I NDUFB10 subunit family.,subunit:Complex I is composed of 45 different subunits.,
<b>Background</b>	function:Accessory subunit of the mitochondrial membrane respiratory chain NADH dehydrogenase (Complex I), that is believed to be not involved in catalysis. Complex I functions in the transfer of electrons from NADH to the respiratory chain. The immediate electron acceptor for the enzyme is believed to be

**Nanjing BYabscience technology Co.,Ltd**



ubiquinone.,similarity:Belongs to the complex I NDUFB10 subunit family.,subunit:Complex I is composed of 45 different subunits.,

**matters needing attention**

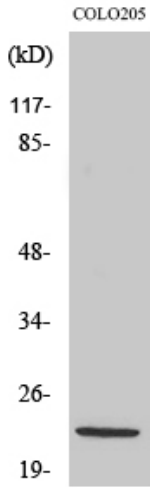
Avoid repeated freezing and thawing!

**Usage suggestions**

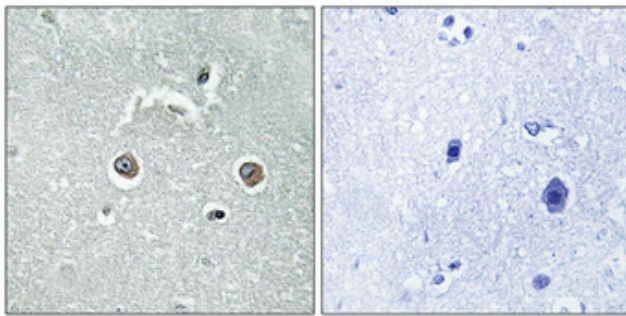
This product can be used in immunological reaction related experiments. For more information, please consult technical personnel.



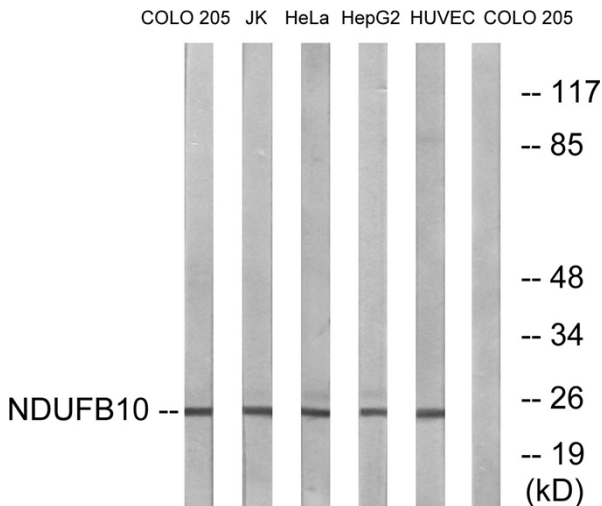
## Products Images



Western Blot analysis of various cells using NDUF B10 Polyclonal Antibody



Immunohistochemical analysis of paraffin-embedded Human brain. Antibody was diluted at 1:100(4° overnight). High-pressure and temperature Tris-EDTA,pH8.0 was used for antigen retrieval. Negative contrl (right) obtained from antibody was pre-absorbed by immunogen peptide.



Western blot analysis of lysates from COLO, Jurkat, HeLa, HepG2, and HUVEC cells, using NDUF B10 Antibody. The lane on the right is blocked with the synthesized peptide.

Nanjing BYabscience technology Co.,Ltd