



# NBPF1/9/10/12/14/15/16/20 Polyclonal Antibody

<b>Catalog No</b>	BYab-02690
<b>Isotype</b>	IgG
<b>Reactivity</b>	Human;Rat;Mouse;
<b>Applications</b>	WB;IHC;IF;ELISA
<b>Gene Name</b>	NBPF12
<b>Protein Name</b>	Neuroblastoma breakpoint family member 12
<b>Immunogen</b>	The antiserum was produced against synthesized peptide derived from human NBPF1/9/10/12/14/15/16/20. AA range:121-150
<b>Specificity</b>	NBPF1/9/10/12/14/15/16/20 Polyclonal Antibody detects endogenous levels of NBPF1/9/10/12/14/15/16/20 protein.
<b>Formulation</b>	Liquid in PBS containing 50% glycerol, 0.5% BSA and 0.02% sodium azide.
<b>Source</b>	Polyclonal, Rabbit,IgG
<b>Purification</b>	The antibody was affinity-purified from rabbit antiserum by affinity-chromatography using epitope-specific immunogen.
<b>Dilution</b>	WB: 1/500 - 1/2000. IHC: 1/100 - 1/300. ELISA: 1/40000.. IF 1:50-200
<b>Concentration</b>	1 mg/ml
<b>Purity</b>	≥90%
<b>Storage Stability</b>	-20°C/1 year
<b>Synonyms</b>	NBPF12; COAS1; KIAA1245; Neuroblastoma breakpoint family member 12; Chromosome 1 amplified sequence 1; NBPF10; Neuroblastoma breakpoint family member 10; NBPF16; Neuroblastoma breakpoint family member 16; NBPF1; KIAA1693; Neuroblastoma brea
<b>Observed Band</b>	36kD
<b>Cell Pathway</b>	Cytoplasm .
<b>Tissue Specificity</b>	Widely expressed with highest levels in brain, ovary, mammary gland, skin and adipose tissue. Also expressed in testis. Detected in a number of tumors including osteosarcoma, mammary carcinoma and hepatocellular carcinoma.
<b>Function</b>	miscellaneous:Encoded by one of the numerous copies of NBPF genes clustered in the p36, p12 and q21 region of the chromosome 1.,similarity:Belongs to the NBPF family.,similarity:Contains 10 NBPF domains.,similarity:Contains 2 NBPF domains.,similarity:Contains 3 NBPF domains.,similarity:Contains 6 NBPF domains.,similarity:Contains 7 NBPF domains.,similarity:Contains 8 NBPF domains.,tissue specificity:Expressed in a neuroblastoma cell line.,tissue

Nanjing BYabscience technology Co.,Ltd



specificity:Expressed in spinal cord.,tissue specificity:Expressed in spleen and fetal liver.,tissue specificity:Expressed in the mammary gland.,tissue specificity:Ubiquitously expressed with a higher expression observed in breast and liver. Also expressed in neuroblastoma cell line.,tissue specificity:Widely expressed. The only tissue which shows a weak expression is kidney.,

### Background

This gene is a member of the neuroblastoma breakpoint family (NBPF) which consists of dozens of recently duplicated genes primarily located in segmental duplications on human chromosome 1. This gene family has experienced its greatest expansion within the human lineage and has expanded, to a lesser extent, among primates in general. Members of this gene family are characterized by tandemly repeated copies of DUF1220 protein domains. Gene copy number variations in the human chromosomal region 1q21.1, where most DUF1220 domains are located, have been implicated in a number of developmental and neurogenetic diseases such as microcephaly, macrocephaly, autism, schizophrenia, mental retardation, congenital heart disease, neuroblastoma, and congenital kidney and urinary tract anomalies. Altered expression of some gene family members is associated with several types of cancer. This

### matters needing attention

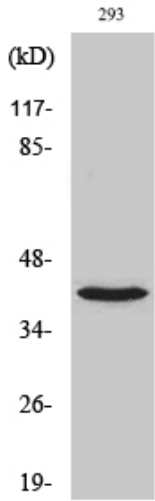
Avoid repeated freezing and thawing!

### Usage suggestions

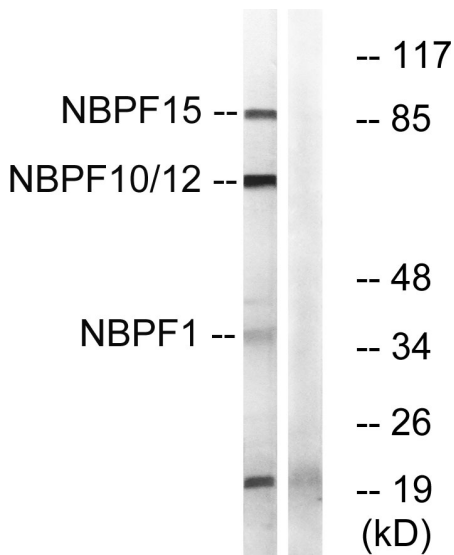
This product can be used in immunological reaction related experiments. For more information, please consult technical personnel.



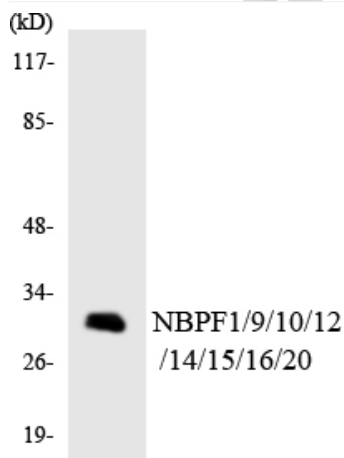
## Products Images



Western Blot analysis of various cells using NBPF1/9/10/12/14/15/16/20 Polyclonal Antibody

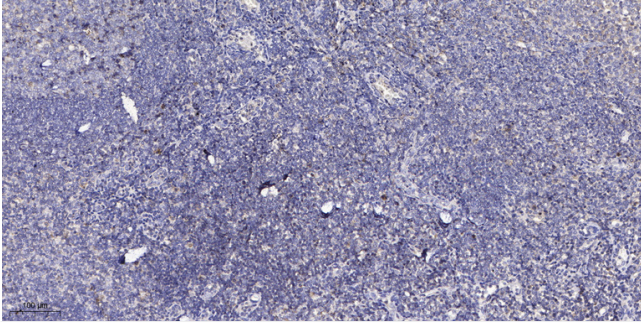


Western blot analysis of lysates from 293, HepG2, Jurkat, and COLO cells, using NBPF1/9/10/12/14/15/16/20 Antibody. The lane on the right is blocked with the synthesized peptide.



Western blot analysis of the lysates from HT-29 cells using NBPF1/9/10/12/14/15/16/20 antibody.

Nanjing BYabscience technology Co.,Ltd



Immunohistochemical analysis of paraffin-embedded human tonsil. 1, Antibody was diluted at 1:200(4° overnight). 2, Tris-EDTA,pH9.0 was used for antigen retrieval. 3,Secondary antibody was diluted at 1:200(room temperature, 30min).