



# N4BP1 Polyclonal Antibody

<b>Catalog No</b>	BYab-02689
<b>Isotype</b>	IgG
<b>Reactivity</b>	Human;Rat;Mouse;
<b>Applications</b>	WB;IHC;IF;ELISA
<b>Gene Name</b>	N4BP1
<b>Protein Name</b>	NEDD4-binding protein 1
<b>Immunogen</b>	The antiserum was produced against synthesized peptide derived from human N4BP1. AA range:383-432
<b>Specificity</b>	N4BP1 Polyclonal Antibody detects endogenous levels of N4BP1 protein.
<b>Formulation</b>	Liquid in PBS containing 50% glycerol, 0.5% BSA and 0.02% sodium azide.
<b>Source</b>	Polyclonal, Rabbit,IgG
<b>Purification</b>	The antibody was affinity-purified from rabbit antiserum by affinity-chromatography using epitope-specific immunogen.
<b>Dilution</b>	WB: 1/500 - 1/2000. IHC: 1/100 - 1/300. ELISA: 1/40000.. IF 1:50-200
<b>Concentration</b>	1 mg/ml
<b>Purity</b>	≥90%
<b>Storage Stability</b>	-20°C/1 year
<b>Synonyms</b>	N4BP1; KIAA0615; NEDD4-binding protein 1; N4BP1
<b>Observed Band</b>	100kD
<b>Cell Pathway</b>	Cytoplasm, cytosol . Nucleus . Nucleus, nucleolus . Nucleus, PML body . Primarily localizes to the nucleolus. Also localizes to the PML nuclear bodies, when desumoylated. .
<b>Tissue Specificity</b>	Detected in heart, lung, brain, liver, skeletal muscle, pancreas, kidney, spleen, testis and ovary.
<b>Function</b>	PTM:Monoubiquitinated.,PTM:Phosphorylated upon DNA damage, probably by ATM or ATR.,similarity:Belongs to the N4BP1 family.,subcellular location:In discrete circular structures.,subunit:Binds NEDD4.,tissue specificity:Detected in heart, lung, brain, liver, skeletal muscle, pancreas, kidney, spleen, testis and ovary.,
<b>Background</b>	PTM:Monoubiquitinated.,PTM:Phosphorylated upon DNA damage, probably by ATM or ATR.,similarity:Belongs to the N4BP1 family.,subcellular location:In discrete circular structures.,subunit:Binds NEDD4.,tissue specificity:Detected in heart, lung, brain, liver, skeletal muscle, pancreas, kidney, spleen, testis and

Nanjing BYabscience technology Co.,Ltd



ovary.,

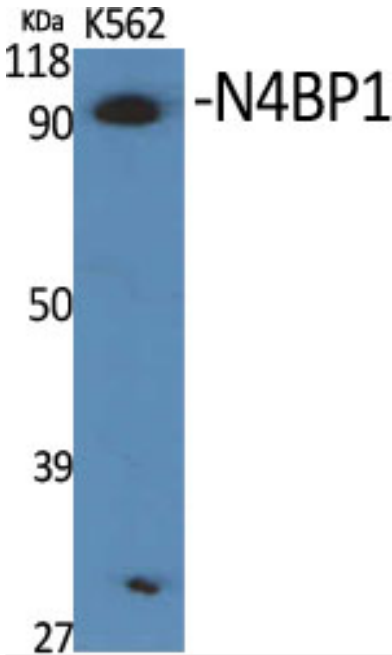
**matters needing attention**

Avoid repeated freezing and thawing!

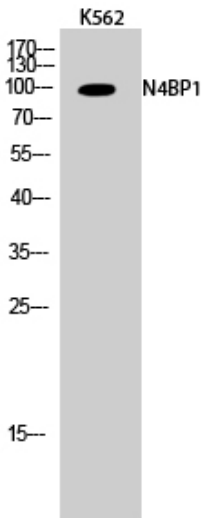
**Usage suggestions**

This product can be used in immunological reaction related experiments. For more information, please consult technical personnel.

**Products Images**

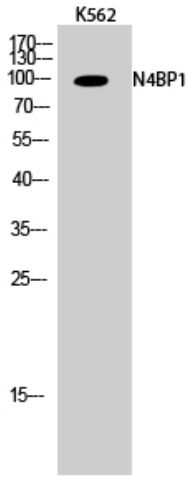


Western Blot analysis of various cells using N4BP1 Polyclonal Antibody cells nucleus extracted by Minute TM Cytoplasmic and Nuclear Fractionation kit (SC-003, Inventbiotech, MN, USA).

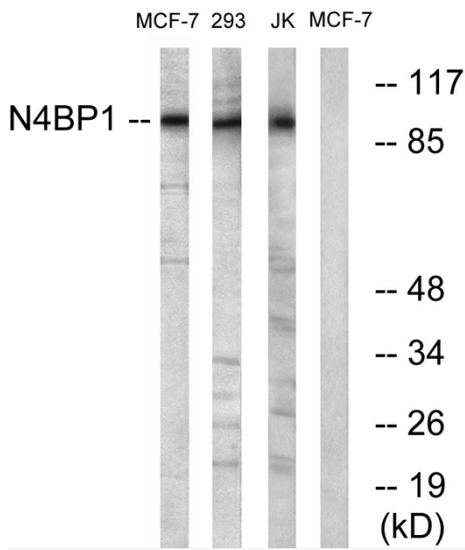


Western Blot analysis of K562 cells using N4BP1 Polyclonal Antibody cells nucleus extracted by Minute TM Cytoplasmic and Nuclear Fractionation kit (SC-003, Inventbiotech, MN, USA).

**Nanjing BYabscience technology Co.,Ltd**



Immunohistochemical analysis of paraffin-embedded Human brain. Antibody was diluted at 1:100(4° overnight). High-pressure and temperature Tris-EDTA,pH8.0 was used for antigen retrieval. Negative contrl (right) obtained from antibody was pre-absorbed by immunogen peptide.



Western blot analysis of lysates from MCF-7 and Jurkat/293 cells, using N4BP1 Antibody. The lane on the right is blocked with the synthesized peptide.