



MMP-15 Polyclonal Antibody

Catalog No	BYab-02687
Isotype	IgG
Reactivity	Human;Mouse
Applications	WB;IHC
Gene Name	MMP15
Protein Name	Matrix metalloproteinase-15
Immunogen	The antiserum was produced against synthesized peptide derived from human MMP-15. AA range:611-660
Specificity	MMP-15 Polyclonal Antibody detects endogenous levels of MMP-15 protein.
Formulation	Liquid in PBS containing 50% glycerol, 0.5% BSA and 0.02% sodium azide.
Source	Polyclonal, Rabbit,IgG
Purification	The antibody was affinity-purified from rabbit antiserum by affinity-chromatography using epitope-specific immunogen.
Dilution	WB 1:500-2000;IHC-p 1:50-300
Concentration	1 mg/ml
Purity	≥90%
Storage Stability	-20°C/1 year
Synonyms	MMP15; Matrix metalloproteinase-15; MMP-15; Membrane-type matrix metalloproteinase 2; MT-MMP 2; MTMMP2; Membrane-type-2 matrix metalloproteinase; MT2-MMP; MT2MMP; SMCP-2
Observed Band	80kD
Cell Pathway	Membrane ; Single-pass type I membrane protein ; Extracellular side .
Tissue Specificity	Appeared to be synthesized preferentially in liver, placenta, testis, colon and intestine. Substantial amounts are also detected in pancreas, kidney, lung, heart and skeletal muscle.
Function	cofactor: Binds 1 zinc ion per subunit.,cofactor: Calcium.,domain: The conserved cysteine present in the cysteine-switch motif binds the catalytic zinc ion, thus inhibiting the enzyme. The dissociation of the cysteine from the zinc ion upon the activation-peptide release activates the enzyme.,function: Endopeptidase that degrades various components of the extracellular matrix. May activate progelatinase A.,PTM: The precursor is cleaved by a furin endopeptidase.,similarity: Belongs to the peptidase M10A family.,similarity: Contains 4 hemopexin-like domains.,tissue specificity: Appeared

Nanjing BYabscience technology Co.,Ltd



to be synthesized preferentially in liver, placenta, testis, colon and intestine. Substantial amounts are also detected in pancreas, kidney, lung, heart and skeletal muscle.,

Background

This gene encodes a member of the peptidase M10 family and membrane-type subfamily of matrix metalloproteinases (MMPs). Proteins in this family are involved in the breakdown of extracellular matrix in normal physiological processes, such as embryonic development, reproduction, and tissue remodeling, as well as in disease processes, such as arthritis and metastasis. Members of this subfamily contain a transmembrane domain suggesting that these proteins are expressed at the cell surface rather than secreted. The encoded preproprotein is proteolytically processed to generate the mature protease. This protein may play a role in cancer progression. [provided by RefSeq, Jan 2016],

matters needing attention

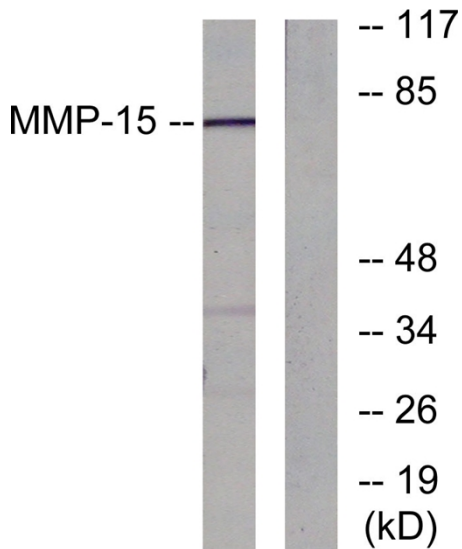
Avoid repeated freezing and thawing!

Usage suggestions

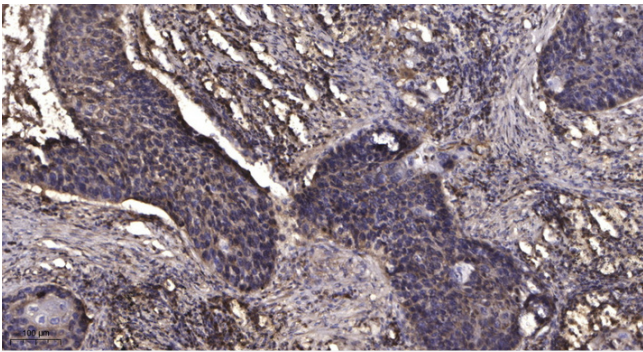
This product can be used in immunological reaction related experiments. For more information, please consult technical personnel.



Products Images



Western blot analysis of lysates from MDA-MB-435 cells, using MMP-15 Antibody. The lane on the right is blocked with the synthesized peptide.



Immunohistochemical analysis of paraffin-embedded human Squamous cell carcinoma of lung. 1, Antibody was diluted at 1:200(4° overnight). 2, Tris-EDTA,pH9.0 was used for antigen retrieval. 3,Secondary antibody was diluted at 1:200(room temperature, 45min).