



# MARCH4 Polyclonal Antibody

<b>Catalog No</b>	BYab-02671
<b>Isotype</b>	IgG
<b>Reactivity</b>	Human;Mouse
<b>Applications</b>	IHC;IF;ELISA
<b>Gene Name</b>	44989
<b>Protein Name</b>	E3 ubiquitin-protein ligase MARCH4
<b>Immunogen</b>	The antiserum was produced against synthesized peptide derived from human MARCH4. AA range:301-350
<b>Specificity</b>	MARCH4 Polyclonal Antibody detects endogenous levels of 40606 protein.
<b>Formulation</b>	Liquid in PBS containing 50% glycerol, 0.5% BSA and 0.02% sodium azide.
<b>Source</b>	Polyclonal, Rabbit,IgG
<b>Purification</b>	The antibody was affinity-purified from rabbit antiserum by affinity-chromatography using epitope-specific immunogen.
<b>Dilution</b>	IHC: 1/100 - 1/300. ELISA: 1/40000.. IF 1:50-200
<b>Concentration</b>	1 mg/ml
<b>Purity</b>	≥90%
<b>Storage Stability</b>	-20°C/1 year
<b>Synonyms</b>	MARCH4; KIAA1399; RNF174; E3 ubiquitin-protein ligase MARCH4; Membrane-associated RING finger protein 4; Membrane-associated RING-CH protein IV; MARCH-IV; RING finger protein 174
<b>Observed Band</b>	
<b>Cell Pathway</b>	Golgi apparatus membrane ; Multi-pass membrane protein .
<b>Tissue Specificity</b>	Expressed in brain and placenta.
<b>Function</b>	domain:The RING-CH-type zinc finger domain is required for E3 ligase activity.,function:E3 ubiquitin-protein ligase that may mediate ubiquitination of MHC-I and CD4, and promote their subsequent endocytosis and sorting to lysosomes via multivesicular bodies. E3 ubiquitin ligases accept ubiquitin from an E2 ubiquitin-conjugating enzyme in the form of a thioester and then directly transfer the ubiquitin to targeted substrates.,pathway:Protein modification; protein ubiquitination.,similarity:Contains 1 RING-CH-type zinc finger.,tissue specificity:Expressed in brain and placenta.,

Nanjing BYabscience technology Co.,Ltd



**Background**

MARCH4 is a member of the MARCH family of membrane-bound E3 ubiquitin ligases (EC 6.3.2.19). MARCH enzymes add ubiquitin (see MIM 191339) to target lysines in substrate proteins, thereby signaling their vesicular transport between membrane compartments. MARCH4 reduces surface accumulation of several membrane glycoproteins by directing them to the endosomal compartment (Bartee et al., 2004 [PubMed 14722266]).[supplied by OMIM, Apr 2010],

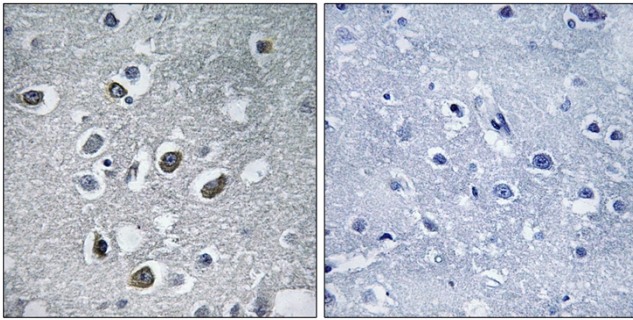
**matters needing attention**

Avoid repeated freezing and thawing!

**Usage suggestions**

This product can be used in immunological reaction related experiments. For more information, please consult technical personnel.

**Products Images**



Immunohistochemistry analysis of paraffin-embedded human brain tissue, using MARCH4 Antibody. The picture on the right is blocked with the synthesized peptide.