



LPD lipase Polyclonal Antibody

Catalog No	BYab-02663
Isotype	IgG
Reactivity	Human;Rat;Mouse;
Applications	WB;IHC;IF;ELISA
Gene Name	LIPI
Protein Name	Lipase member I
Immunogen	The antiserum was produced against synthesized peptide derived from human LIPI. AA range:289-338
Specificity	LPD lipase Polyclonal Antibody detects endogenous levels of LPD lipase protein.
Formulation	Liquid in PBS containing 50% glycerol, 0.5% BSA and 0.02% sodium azide.
Source	Polyclonal, Rabbit,IgG
Purification	The antibody was affinity-purified from rabbit antiserum by affinity-chromatography using epitope-specific immunogen.
Dilution	WB: 1/500 - 1/2000. IHC: 1/100 - 1/300. ELISA: 1/10000.. IF 1:50-200
Concentration	1 mg/ml
Purity	≥90%
Storage Stability	-20°C/1 year
Synonyms	LIPI; LPDL; PRED5; Lipase member I; LIPI; Cancer/testis antigen 17; CT17; LPD lipase; Membrane-associated phosphatidic acid-selective phospholipase A1-beta; mPA-PLA1 beta
Observed Band	53kD
Cell Pathway	[Isoform 1]: Cell membrane . Secreted . May associate with lipid draft. .; [Isoform 2]: Cell membrane . Secreted . May associate with lipid draft. .
Tissue Specificity	Expressed in testis. Expressed exclusively at the connecting piece of the sperm.
Function	disease:Defects in LIPI may be a cause of susceptibility to familial hypertriglyceridemia [MIM:145750]. Familial hypertriglyceridemia is a common inherited disorder in which the concentration of very low density lipoprotein (VLDL) is elevated in the plasma. This leads to increased risk of heart disease, obesity, and pancreatitis.,enzyme regulation:Inhibited by sodium vanadate.,function:Hydrolyzes specifically phosphatidic acid (PA) to produce lysophosphatidic acid (LPA).,PTM:Phosphorylated upon DNA damage, probably by ATM or ATR.,similarity:Belongs to the AB hydrolase superfamily. Lipase family.,subcellular location:May associate with lipid draft.,subunit:Interacts with

Nanjing BYabscience technology Co.,Ltd



heparin with a high affinity.,tissue specificity:Expressed in testis. Expressed exclusively at the connecting piece of the sperm.,

Background

The protein encoded by this gene is a phospholipase that hydrolyzes phosphatidic acid to produce lysophosphatidic acid. Defects in this gene are a cause of susceptibility to familial hypertriglyceridemia. This gene is also expressed at high levels in Ewing family tumor cells. Alternative splicing results in multiple transcript variants. [provided by RefSeq, Dec 2014],

matters needing attention

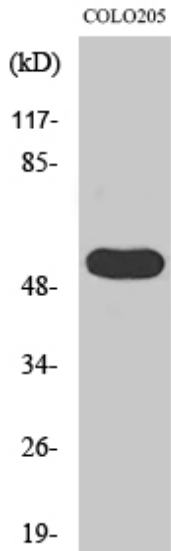
Avoid repeated freezing and thawing!

Usage suggestions

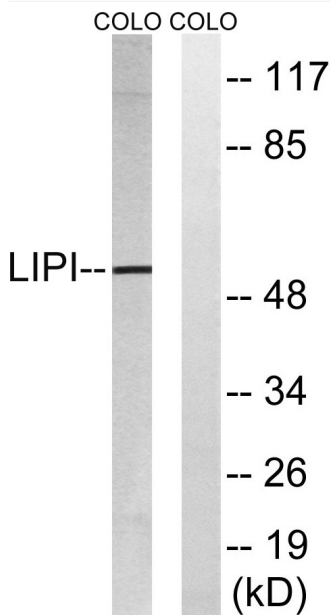
This product can be used in immunological reaction related experiments. For more information, please consult technical personnel.



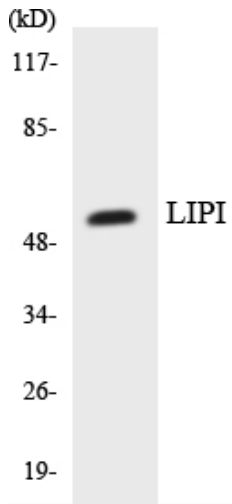
Products Images



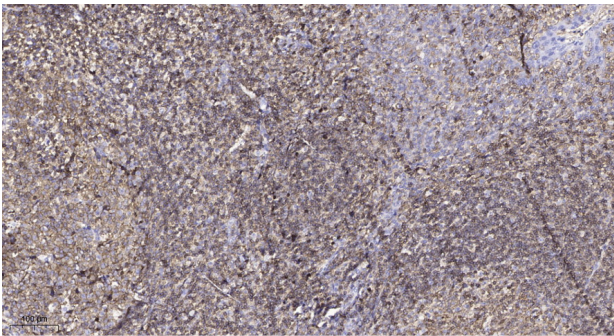
Western Blot analysis of various cells using LPD lipase Polyclonal Antibody



Western blot analysis of lysates from COLO cells, using LIPI Antibody. The lane on the right is blocked with the synthesized peptide.



Western blot analysis of the lysates from HepG2 cells using LIPI antibody.



Immunohistochemical analysis of paraffin-embedded human tonsil. 1, Antibody was diluted at 1:200(4° overnight). 2, Tris-EDTA,pH9.0 was used for antigen retrieval. 3,Secondary antibody was diluted at 1:200(room temperature, 45min).