



# LPCAT2 Polyclonal Antibody

|                           |   |
|---------------------------|---|
| <b>Catalog No</b>         | BYab-02662  |
| <b>Isotype</b>            | IgG   |
| <b>Reactivity</b>         | Human;Mouse;Rat   |
| <b>Applications</b>       | WB;IHC  |
| <b>Gene Name</b>          | LPCAT2  |
| <b>Protein Name</b>       | Lysophosphatidylcholine acyltransferase 2   |
| <b>Immunogen</b>          | The antiserum was produced against synthesized peptide derived from human LPCAT2. AA range:321-370  |
| <b>Specificity</b>        | LPCAT2 Polyclonal Antibody detects endogenous levels of LPCAT2 protein.   |
| <b>Formulation</b>        | Liquid in PBS containing 50% glycerol, 0.5% BSA and 0.02% sodium azide.   |
| <b>Source</b>             | Polyclonal, Rabbit,IgG  |
| <b>Purification</b>       | The antibody was affinity-purified from rabbit antiserum by affinity-chromatography using epitope-specific immunogen.   |
| <b>Dilution</b>           | WB 1:500-2000;IHC-p 1:50-300  |
| <b>Concentration</b>      | 1 mg/ml   |
| <b>Purity</b>             | ≥90%  |
| <b>Storage Stability</b>  | -20°C/1 year  |
| <b>Synonyms</b>           | LPCAT2; AYTL1; Lysophosphatidylcholine acyltransferase 2; LPC acyltransferase 2; LPCAT-2; LysoPC acyltransferase 2; 1-acylglycerophosphocholine O-acyltransferase; 1-alkylglycerophosphocholine O-acetyltransferase; Acetyl-CoA:lyso-platelet-ac  |
| <b>Observed Band</b>      | 50kD  |
| <b>Cell Pathway</b>       | Endoplasmic reticulum membrane ; Single-pass type II membrane protein . Golgi apparatus membrane ; Single-pass type II membrane protein . Cell membrane ; Single-pass type II membrane protein . Lipid droplet .  |
| <b>Tissue Specificity</b> | Carcinoma,Fetal kidney,Kidney,  |
| <b>Function</b>           | catalytic activity:Acetyl-CoA + 1-alkyl-sn-glycero-3-phosphocholine = CoA + 2-acetyl-1-alkyl-sn-glycero-3-phosphocholine.,catalytic activity:Acyl-CoA + 1-acyl-sn-glycero-3-phosphocholine = CoA + 1,2-diacyl-sn-glycero-3-phosphocholine.,domain:The HXXXXD motif is essential for acyltransferase activity.,enzyme regulation:Acetyltransferase activity is increased following acute inflammatory stimulation by lipopolysaccharide (LPS). |

Nanjing BYabscience technology Co.,Ltd



Acyltransferase activity is unchanged.,function:Possesses both acyltransferase and acetyltransferase activities. Activity is calcium-dependent. Involved in platelet-activating factor (PAF) biosynthesis by catalyzing the conversion of the PAF precursor, 1-O-alkyl-sn-glycero-3-phosphocholine (lyso-PAF) into 1-O-alkyl-2-acetyl-sn-glycero-3-phosphocholine (PAF). Also converts lyso-PAF to 1-alkyl-phosphatidylcholine (PC), a major component of cell membranes and a PAF pre

**Background**

This gene encodes a member of the lysophospholipid acyltransferase family. The encoded enzyme may function in two ways: to catalyze the biosynthesis of platelet-activating factor (1-O-alkyl-2-acetyl-sn-glycero-3-phosphocholine) from 1-O-alkyl-sn-glycero-3-phosphocholine, and to catalyze the synthesis of glycerophospholipid precursors from arachidonyl-CoA and lysophosphatidylcholine. The encoded protein may function in membrane biogenesis and production of platelet-activating factor in inflammatory cells. The enzyme may localize to the endoplasmic reticulum and the Golgi. [provided by RefSeq, Feb 2009],

**matters needing attention**

Avoid repeated freezing and thawing!

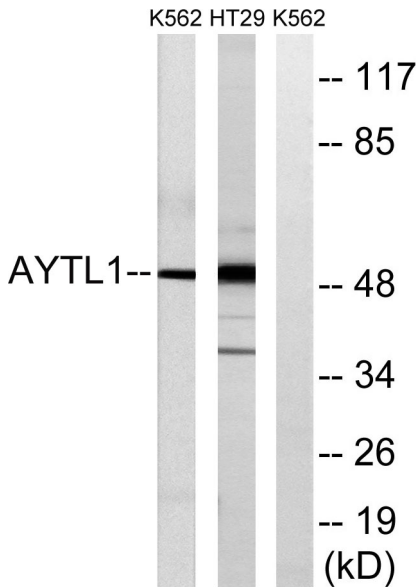
**Usage suggestions**

This product can be used in immunological reaction related experiments. For more information, please consult technical personnel.

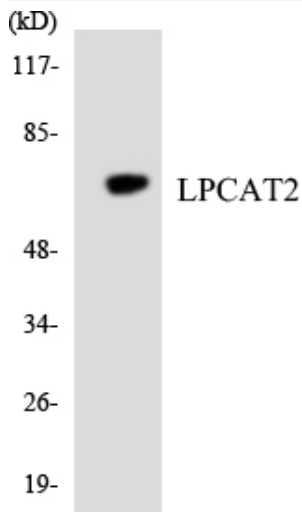
Nanjing BYabscience technology Co.,Ltd



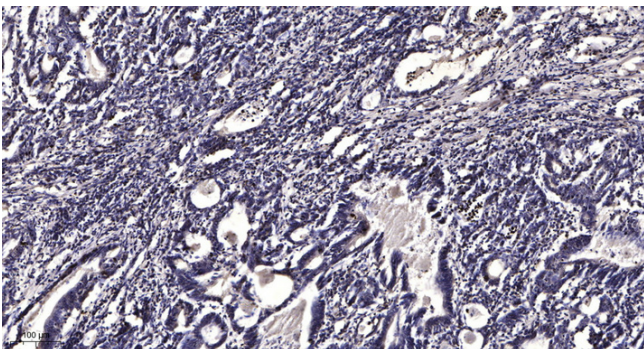
## Products Images



Western blot analysis of lysates from K562 and HT-29 cells, using LPCAT2 Antibody. The lane on the right is blocked with the synthesized peptide.



Western blot analysis of the lysates from HT-29 cells using LPCAT2 antibody.



Immunohistochemical analysis of paraffin-embedded human Gastric adenocarcinoma. 1, Antibody was diluted at 1:200(4° overnight). 2, Tris-EDTA,pH9.0 was used for antigen retrieval. 3,Secondary antibody was diluted at 1:200(room temperature, 45min).