



# Hepatic Lipase Polyclonal Antibody

<b>Catalog No</b>	BYab-02652
<b>Isotype</b>	IgG
<b>Reactivity</b>	Human;Rat;Mouse;
<b>Applications</b>	WB;IHC;IF;ELISA
<b>Gene Name</b>	LIPC
<b>Protein Name</b>	Hepatic triacylglycerol lipase
<b>Immunogen</b>	The antiserum was produced against synthesized peptide derived from human LIPC. AA range:301-350
<b>Specificity</b>	Hepatic Lipase Polyclonal Antibody detects endogenous levels of Hepatic Lipase protein.
<b>Formulation</b>	Liquid in PBS containing 50% glycerol, 0.5% BSA and 0.02% sodium azide.
<b>Source</b>	Polyclonal, Rabbit,IgG
<b>Purification</b>	The antibody was affinity-purified from rabbit antiserum by affinity-chromatography using epitope-specific immunogen.
<b>Dilution</b>	WB: 1/500 - 1/2000. IHC: 1/100 - 1/300. ELISA: 1/10000.. IF 1:50-200
<b>Concentration</b>	1 mg/ml
<b>Purity</b>	≥90%
<b>Storage Stability</b>	-20°C/1 year
<b>Synonyms</b>	LIPC; HTGL; Hepatic triacylglycerol lipase; HL; Hepatic lipase; Lipase member C
<b>Observed Band</b>	56kD
<b>Cell Pathway</b>	Secreted .
<b>Tissue Specificity</b>	Donated clones,Liver,Thymus,
<b>Function</b>	catalytic activity:Triacylglycerol + H(2)O = diacylglycerol + a carboxylate.,disease:Defects in LIPC are the cause of hepatic lipase deficiency (HL deficiency) [MIM:151670].,function:Hepatic lipase has the capacity to catalyze hydrolysis of phospholipids, mono-, di-, and triglycerides, and acyl-CoA thioesters. It is an important enzyme in HDL metabolism. Hepatic lipase binds heparin.,online information:The Singapore human mutation and polymorphism database,similarity:Belongs to the AB hydrolase superfamily. Lipase family.,similarity:Contains 1 PLAT domain.,
<b>Background</b>	LIPC encodes hepatic triglyceride lipase, which is expressed in liver. LIPC has the dual functions of triglyceride hydrolase and ligand/bridging factor for

Nanjing BYabscience technology Co.,Ltd



receptor-mediated lipoprotein uptake. [provided by RefSeq, Jul 2008],

**matters needing attention**

Avoid repeated freezing and thawing!

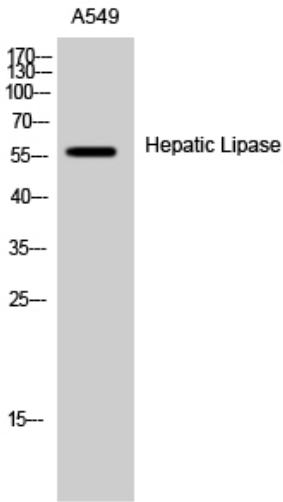
**Usage suggestions**

This product can be used in immunological reaction related experiments. For more information, please consult technical personnel.

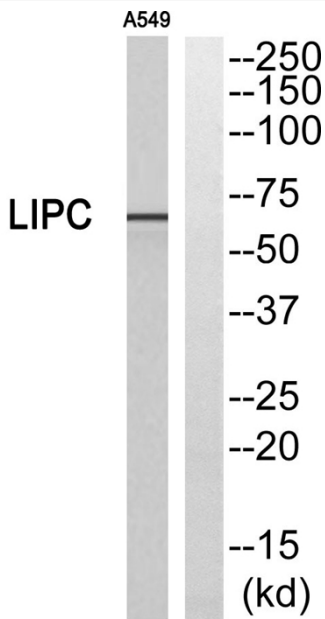
Nanjing BYabscience technology Co.,Ltd



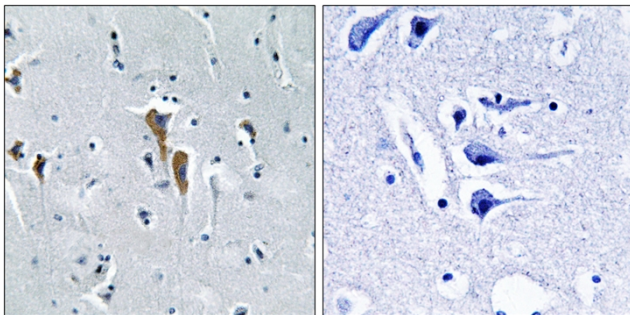
## Products Images



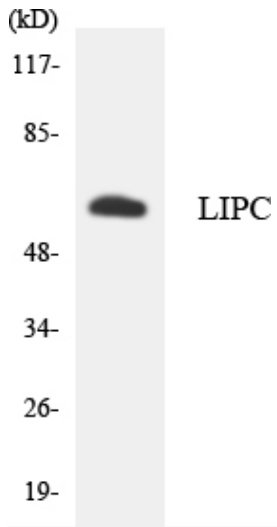
Western Blot analysis of A549 cells using Hepatic Lipase Polyclonal Antibody



Western blot analysis of LIPC Antibody. The lane on the right is blocked with the LIPC peptide.



Immunohistochemistry analysis of paraffin-embedded human brain, using LIPC Antibody. The lane on the right is blocked with the LIPC peptide.



Western blot analysis of the lysates from HT-29 cells using LIPC antibody.