



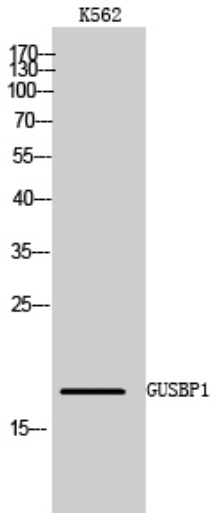
GUSBP1 Polyclonal Antibody

Catalog No	BYab-02650
Isotype	IgG
Reactivity	Human;Rat;Mouse;
Applications	WB;ELISA
Gene Name	GUSBP1
Protein Name	Putative beta-glucuronidase-like protein SMA3
Immunogen	The antiserum was produced against synthesized peptide derived from human GUSBL1. AA range:51-100
Specificity	GUSBP1 Polyclonal Antibody detects endogenous levels of GUSBP1 protein.
Formulation	Liquid in PBS containing 50% glycerol, 0.5% BSA and 0.02% sodium azide.
Source	Polyclonal, Rabbit,IgG
Purification	The antibody was affinity-purified from rabbit antiserum by affinity-chromatography using epitope-specific immunogen.
Dilution	Western Blot: 1/500 - 1/2000. ELISA: 1/40000. Not yet tested in other applications.
Concentration	1 mg/ml
Purity	≥90%
Storage Stability	-20°C/1 year
Synonyms	GUSBP1; SMA3; Putative beta-glucuronidase-like protein SMA3
Observed Band	18kD
Cell Pathway	
Tissue Specificity	Ubiquitous.
Function	skeletal system development,
Background	Binds GTP, GDP and GMP.
matters needing attention	Avoid repeated freezing and thawing!
Usage suggestions	This product can be used in immunological reaction related experiments. For more information, please consult technical personnel.

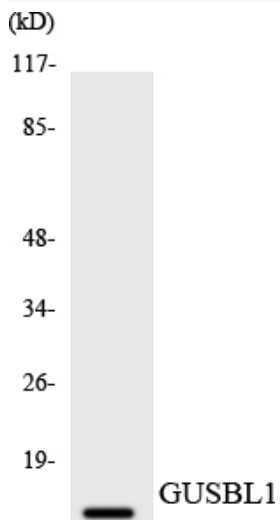
Nanjing BYabscience technology Co.,Ltd



Products Images



Western Blot analysis of K562 cells using GUSBP1 Polyclonal Antibody



Western blot analysis of the lysates from HT-29 cells using GUSBL1 antibody.