



# GGH Polyclonal Antibody

<b>Catalog No</b>	BYab-02640
<b>Isotype</b>	IgG
<b>Reactivity</b>	Human;Rat;Mouse;
<b>Applications</b>	WB;IHC;IF;ELISA
<b>Gene Name</b>	GGH
<b>Protein Name</b>	Gamma-glutamyl hydrolase
<b>Immunogen</b>	The antiserum was produced against synthesized peptide derived from human GGH. AA range:251-300
<b>Specificity</b>	GGH Polyclonal Antibody detects endogenous levels of GGH protein.
<b>Formulation</b>	Liquid in PBS containing 50% glycerol, 0.5% BSA and 0.02% sodium azide.
<b>Source</b>	Polyclonal, Rabbit,IgG
<b>Purification</b>	The antibody was affinity-purified from rabbit antiserum by affinity-chromatography using epitope-specific immunogen.
<b>Dilution</b>	WB: 1/500 - 1/2000. IHC: 1/100 - 1/300. ELISA: 1/10000.. IF 1:50-200
<b>Concentration</b>	1 mg/ml
<b>Purity</b>	≥90%
<b>Storage Stability</b>	-20°C/1 year
<b>Synonyms</b>	GGH; Gamma-glutamyl hydrolase; Conjugase; GH; Gamma-Glu-X carboxypeptidase
<b>Observed Band</b>	36kD
<b>Cell Pathway</b>	Secreted, extracellular space . Lysosome . Melanosome . While its intracellular location is primarily the lysosome, most of the enzyme activity is secreted. Identified by mass spectrometry in melanosome fractions from stage I to stage IV.
<b>Tissue Specificity</b>	Skin,
<b>Function</b>	catalytic activity:Hydrolysis of a gamma-glutamyl bond.,function:Hydrolyzes the polyglutamate sidechains of pteroylpolyglutamates. Progressively removes gamma-glutamyl residues from pteroylpoly-gamma-glutamate to yield pteroyl-alpha-glutamate (folic acid) and free glutamate. May play an important role in the bioavailability of dietary pteroylpolyglutamates and in the metabolism of pteroylpolyglutamates and antifolates.,similarity:Belongs to the peptidase C26 family.,similarity:Contains 1 gamma-glutamyl hydrolase domain.,subcellular location:While its intracellular location is primarily the lysosome, most of the

Nanjing BYabscience technology Co.,Ltd



enzyme activity is secreted. Identified by mass spectrometry in melanosome fractions from stage I to stage IV.,

**Background**

This gene catalyzes the hydrolysis of foylpoly-gamma-glutamates and antifolypoly-gamma-glutamates by the removal of gamma-linked polyglutamates and glutamate. [provided by RefSeq, Jul 2008],

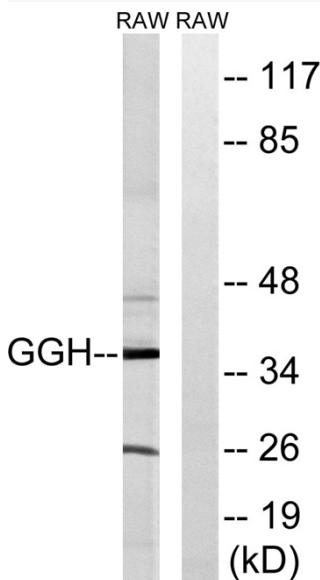
**matters needing attention**

Avoid repeated freezing and thawing!

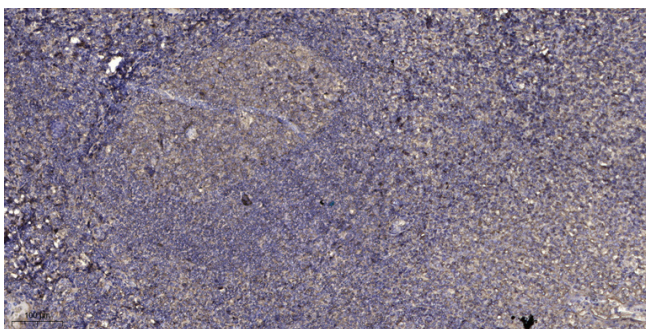
**Usage suggestions**

This product can be used in immunological reaction related experiments. For more information, please consult technical personnel.

**Products Images**



Western blot analysis of lysates from RAW264.7 cells, using GGH Antibody. The lane on the right is blocked with the synthesized peptide.



Immunohistochemical analysis of paraffin-embedded human tonsil. 1, Antibody was diluted at 1:200(4° overnight). 2, Tris-EDTA,pH9.0 was used for antigen retrieval. 3,Secondary antibody was diluted at 1:200(room temperature, 30min).