



ELOVL5 Polyclonal Antibody

Catalog No	BYab-02630
Isotype	IgG
Reactivity	Human;Rat;Mouse;
Applications	WB;IHC;IF;ELISA
Gene Name	ELOVL5
Protein Name	Elongation of very long chain fatty acids protein 5
Immunogen	The antiserum was produced against synthesized peptide derived from human ELOVL5. AA range:250-299
Specificity	ELOVL5 Polyclonal Antibody detects endogenous levels of ELOVL5 protein.
Formulation	Liquid in PBS containing 50% glycerol, 0.5% BSA and 0.02% sodium azide.
Source	Polyclonal, Rabbit,IgG
Purification	The antibody was affinity-purified from rabbit antiserum by affinity-chromatography using epitope-specific immunogen.
Dilution	WB: 1/500 - 1/2000. IHC: 1/100 - 1/300. ELISA: 1/40000.. IF 1:50-200
Concentration	1 mg/ml
Purity	≥90%
Storage Stability	-20°C/1 year
Synonyms	ELOVL5; ELOVL2; Elongation of very long chain fatty acids protein 5; 3-keto acyl-CoA synthase ELOVL5; ELOVL fatty acid elongase 5; ELOVL FA elongase 5; Fatty acid elongase 1; hELO1
Observed Band	28kD
Cell Pathway	Endoplasmic reticulum membrane ; Multi-pass membrane protein . Cell projection, dendrite . In Purkinje cells, the protein localizes to the soma and proximal portion of the dendritic tree. .
Tissue Specificity	Ubiquitous. Highly expressed in the adrenal gland and testis. Weakly expressed in prostate, lung and brain. Expressed in the cerebellum.
Function	function:May be involved in the elongation of long-chain polyunsaturated fatty acids (PUFAs).,similarity:Belongs to the ELO family.,tissue specificity:Highly expressed in the adrenal gland and testis. Weekly expressed in prostate, lung and brain.,
Background	This gene belongs to the ELO family. It is highly expressed in the adrenal gland and testis, and encodes a multi-pass membrane protein that is localized in the endoplasmic reticulum. This protein is involved in the elongation of long-chain

Nanjing BYabscience technology Co.,Ltd



polyunsaturated fatty acids. Mutations in this gene have been associated with spinocerebellar ataxia-38 (SCA38). Alternatively spliced transcript variants have been found for this gene. [provided by RefSeq, Sep 2014],

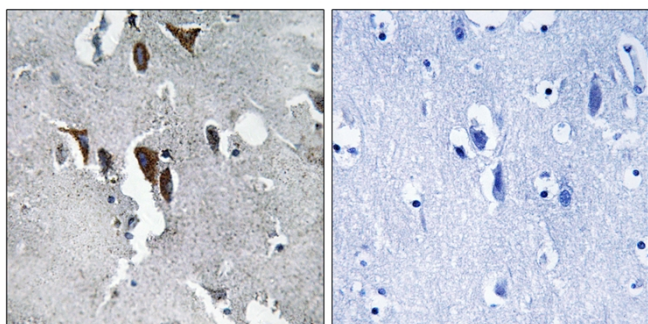
matters needing attention

Avoid repeated freezing and thawing!

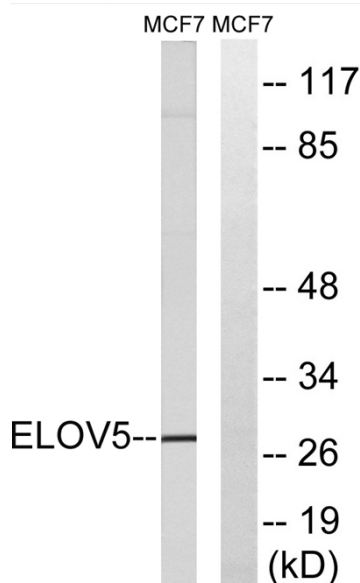
Usage suggestions

This product can be used in immunological reaction related experiments. For more information, please consult technical personnel.

Products Images



Immunohistochemistry analysis of paraffin-embedded human brain tissue, using ELOVL5 Antibody. The picture on the right is blocked with the synthesized peptide.



Western blot analysis of lysates from MCF-7 cells, using ELOVL5 Antibody. The lane on the right is blocked with the synthesized peptide.