



ELOVL3 Polyclonal Antibody

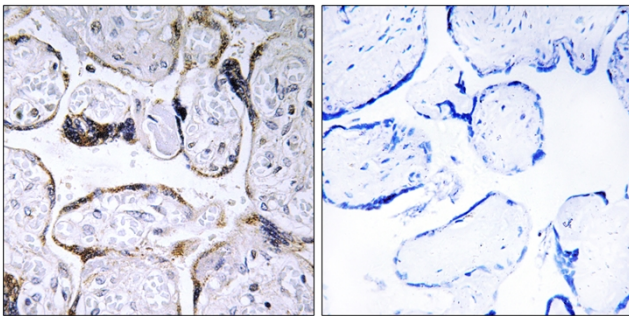
Catalog No	BYab-02628
Isotype	IgG
Reactivity	Human;Rat;Mouse;
Applications	IHC;IF;ELISA
Gene Name	ELOVL3
Protein Name	Elongation of very long chain fatty acids protein 3
Immunogen	The antiserum was produced against synthesized peptide derived from human ELOVL3. AA range:31-80
Specificity	ELOVL3 Polyclonal Antibody detects endogenous levels of ELOVL3 protein.
Formulation	Liquid in PBS containing 50% glycerol, 0.5% BSA and 0.02% sodium azide.
Source	Polyclonal, Rabbit,IgG
Purification	The antibody was affinity-purified from rabbit antiserum by affinity-chromatography using epitope-specific immunogen.
Dilution	IHC: 1/100 - 1/300. ELISA: 1/20000.. IF 1:50-200
Concentration	1 mg/ml
Purity	≥90%
Storage Stability	-20°C/1 year
Synonyms	ELOVL3; CIG30; Elongation of very long chain fatty acids protein 3; 3-keto acyl-CoA synthase ELOVL3; Cold-inducible glycoprotein of 30 kDa; ELOVL fatty acid elongase 3; ELOVL FA elongase 3
Observed Band	
Cell Pathway	Endoplasmic reticulum membrane ; Multi-pass membrane protein .
Tissue Specificity	Testis.
Function	domain:The di-lysine motif confers endoplasmic reticulum localization for type I membrane proteins.,function:May be involved in a membrane event related to cellular proliferation in brown adipose tissue. Could be implicated in synthesis of very long chain fatty acids and sphingolipids. May catalyze one or both of the reduction reaction in fatty acid elongation, i.e., conversion of beta-ketoacyl CoA to beta-hydroxyacyl CoA or reduction of trans-2-enoyl CoA to the saturated acyl CoA derivative.,similarity:Belongs to the ELO family.,

Nanjing BYabscience technology Co.,Ltd



Background	This gene encodes a protein that belongs to the GNS1/SUR4 family. Members of this family play a role in elongation of long chain fatty acids to provide precursors for synthesis of sphingolipids and ceramides. [provided by RefSeq, Jul 2013],
matters needing attention	Avoid repeated freezing and thawing!
Usage suggestions	This product can be used in immunological reaction related experiments. For more information, please consult technical personnel.

Products Images



Immunohistochemistry analysis of paraffin-embedded human placenta, using ELOVL3 Antibody. The picture on the right is blocked with the synthesized peptide.