



ELOVL2 Polyclonal Antibody

Catalog No	BYab-02627
Isotype	IgG
Reactivity	Human;Rat;Mouse;
Applications	IHC;IF;ELISA
Gene Name	ELOVL2
Protein Name	Elongation of very long chain fatty acids protein 2
Immunogen	The antiserum was produced against synthesized peptide derived from human ELOVL2. AA range:250-296
Specificity	ELOVL2 Polyclonal Antibody detects endogenous levels of ELOVL2 protein.
Formulation	Liquid in PBS containing 50% glycerol, 0.5% BSA and 0.02% sodium azide.
Source	Polyclonal, Rabbit,IgG
Purification	The antibody was affinity-purified from rabbit antiserum by affinity-chromatography using epitope-specific immunogen.
Dilution	IHC: 1/100 - 1/300. ELISA: 1/10000.. IF 1:50-200
Concentration	1 mg/ml
Purity	≥90%
Storage Stability	-20°C/1 year
Synonyms	ELOVL2; SSC2; Elongation of very long chain fatty acids protein 2; 3-keto acyl-CoA synthase ELOVL2; ELOVL fatty acid elongase 2; ELOVL FA elongase 2
Observed Band	
Cell Pathway	Endoplasmic reticulum membrane ; Multi-pass membrane protein .
Tissue Specificity	Liver and testis.
Function	domain:The di-lysine motif confers endoplasmic reticulum localization for type I membrane proteins.,function:Could be implicated in tissue-specific synthesis of very long chain fatty acids and sphingolipids. May catalyze one or both of the reduction reaction in fatty acid elongation, i.e., conversion of beta-ketoacyl CoA to beta-hydroxyacyl CoA or reduction of trans-2-enoyl CoA to the saturated acyl CoA derivative.,similarity:Belongs to the ELO family.,
Background	domain:The di-lysine motif confers endoplasmic reticulum localization for type I membrane proteins.,function:Could be implicated in tissue-specific synthesis of very long chain fatty acids and sphingolipids. May catalyze one or both of the reduction reaction in fatty acid elongation, i.e., conversion of beta-ketoacyl CoA to

Nanjing BYabscience technology Co.,Ltd



beta-hydroxyacyl CoA or reduction of trans-2-enoyl CoA to the saturated acyl CoA derivative.,similarity:Belongs to the ELO family.,

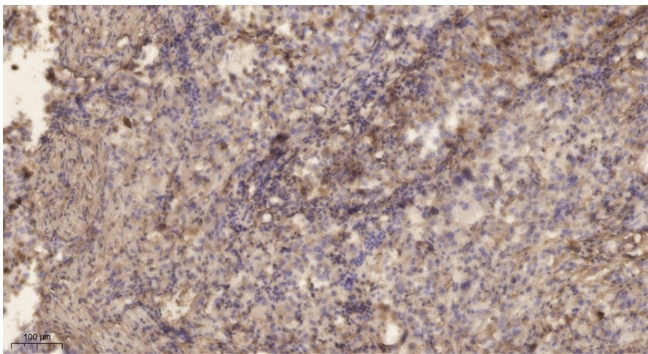
matters needing attention

Avoid repeated freezing and thawing!

Usage suggestions

This product can be used in immunological reaction related experiments. For more information, please consult technical personnel.

Products Images



Immunohistochemical analysis of paraffin-embedded human lung cancer. 1, Antibody was diluted at 1:200(4° overnight). 2, Tris-EDTA,pH9.0 was used for antigen retrieval. 3,Secondary antibody was diluted at 1:200(room temperature, 45min).