



# DMGDH Polyclonal Antibody

<b>Catalog No</b>	BYab-02623
<b>Isotype</b>	IgG
<b>Reactivity</b>	Human;Rat;Mouse;
<b>Applications</b>	WB;IHC;IF;ELISA
<b>Gene Name</b>	DMGDH
<b>Protein Name</b>	Dimethylglycine dehydrogenase mitochondrial
<b>Immunogen</b>	The antiserum was produced against synthesized peptide derived from human DMGDH. AA range:817-866
<b>Specificity</b>	DMGDH Polyclonal Antibody detects endogenous levels of DMGDH protein.
<b>Formulation</b>	Liquid in PBS containing 50% glycerol, 0.5% BSA and 0.02% sodium azide.
<b>Source</b>	Polyclonal, Rabbit,IgG
<b>Purification</b>	The antibody was affinity-purified from rabbit antiserum by affinity-chromatography using epitope-specific immunogen.
<b>Dilution</b>	WB: 1/500 - 1/2000. IHC: 1/100 - 1/300. ELISA: 1/20000.. IF 1:50-200
<b>Concentration</b>	1 mg/ml
<b>Purity</b>	≥90%
<b>Storage Stability</b>	-20°C/1 year
<b>Synonyms</b>	DMGDH; Dimethylglycine dehydrogenase; mitochondrial; ME2GLYDH
<b>Observed Band</b>	97kD
<b>Cell Pathway</b>	Mitochondrion.
<b>Tissue Specificity</b>	Kidney,Trachea,
<b>Function</b>	catalytic activity:N,N-dimethylglycine + acceptor + H(2)O = sarcosine + formaldehyde + reduced acceptor.,cofactor:Binds 1 FAD covalently per monomer.,disease:Defects in DMGDH are the cause of DMGDH deficiency (DMGDHD) [MIM:605850]. DMGDHD is a disorder characterized by fish odor, muscle fatigue with increased serum creatine kinase. Biochemically it is characterized by an increase of N,N-dimethylglycine (DMG) in serum and urine.,pathway:Amine and polyamine degradation; betaine degradation; sarcosine from betaine: step 2/2.,similarity:Belongs to the gcvT family.,subunit:Monomer.,
<b>Background</b>	This gene encodes an enzyme involved in the catabolism of choline, catalyzing the oxidative demethylation of dimethylglycine to form sarcosine. The enzyme is

Nanjing BYabscience technology Co.,Ltd



found as a monomer in the mitochondrial matrix, and uses flavin adenine dinucleotide and folate as cofactors. Mutation in this gene causes dimethylglycine dehydrogenase deficiency, characterized by a fishlike body odor, chronic muscle fatigue, and elevated levels of the muscle form of creatine kinase in serum. Alternative splicing results in multiple transcript variants. [provided by RefSeq, Jul 2013],

**matters needing attention**

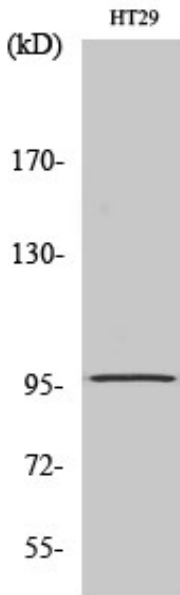
Avoid repeated freezing and thawing!

**Usage suggestions**

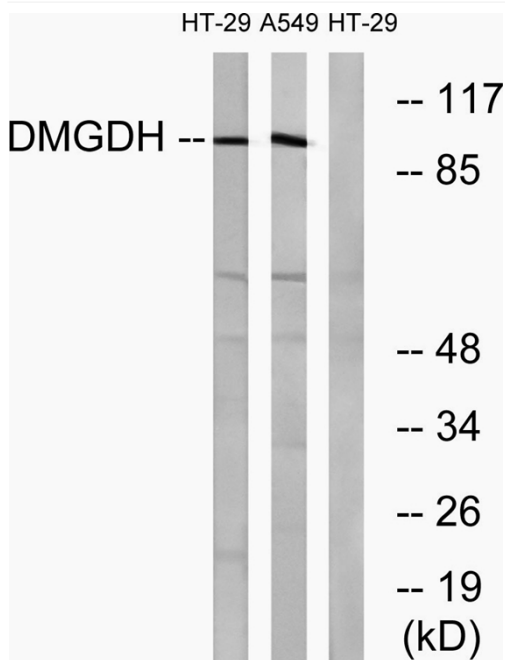
This product can be used in immunological reaction related experiments. For more information, please consult technical personnel.



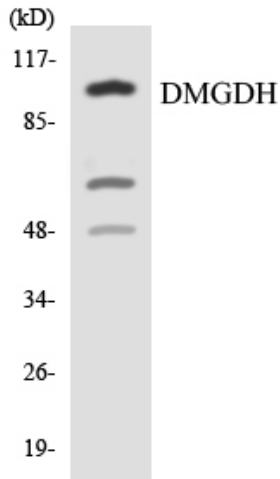
## Products Images



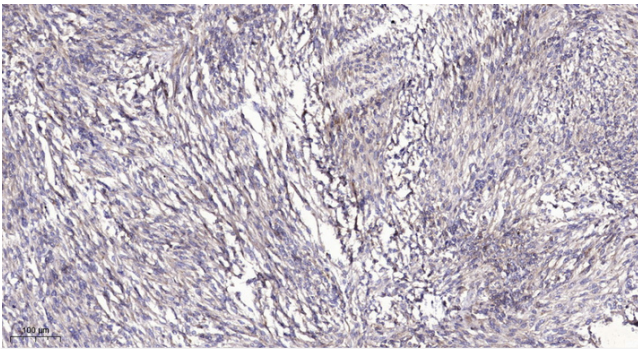
Western Blot analysis of various cells using DMGDH Polyclonal Antibody



Western blot analysis of lysates from HT-29 and A549 cells, using DMGDH Antibody. The lane on the right is blocked with the synthesized peptide.



Western blot analysis of the lysates from HeLa cells using DMGDH antibody.



Immunohistochemical analysis of paraffin-embedded human Colon cancer. 1, Antibody was diluted at 1:200(4° overnight). 2, Tris-EDTA, pH9.0 was used for antigen retrieval. 3, Secondary antibody was diluted at 1:200(room temperature, 45min).