



DHRS11 Polyclonal Antibody

Catalog No	BYab-02618
Isotype	IgG
Reactivity	Human;Mouse
Applications	IHC;IF;WB;ELISA
Gene Name	DHRS11
Protein Name	Dehydrogenase/reductase SDR family member 11
Immunogen	The antiserum was produced against synthesized peptide derived from human DHRS11. AA range:111-160
Specificity	DHRS11 Polyclonal Antibody detects endogenous levels of DHRS11 protein.
Formulation	Liquid in PBS containing 50% glycerol, 0.5% BSA and 0.02% sodium azide.
Source	Polyclonal, Rabbit,IgG
Purification	The antibody was affinity-purified from rabbit antiserum by affinity-chromatography using epitope-specific immunogen.
Dilution	WB 1:500-2000 IHC: 1/100 - 1/300. ELISA: 1/20000.. IF 1:50-200
Concentration	1 mg/ml
Purity	≥90%
Storage Stability	-20°C/1 year
Synonyms	DHRS11; Dehydrogenase/reductase SDR family member 11
Observed Band	
Cell Pathway	Secreted .
Tissue Specificity	Isoform 1: Ubiquitously expressed, with highest levels in testis, small intestine, colon, kidney, brain and heart. Isoform 3: Expressed in brain, heart and skeletal muscle.
Function	similarity:Belongs to the short-chain dehydrogenases/reductases (SDR) family.,subunit:Homotetramer.,
Background	similarity:Belongs to the short-chain dehydrogenases/reductases (SDR) family.,subunit:Homotetramer.,
matters needing attention	Avoid repeated freezing and thawing!

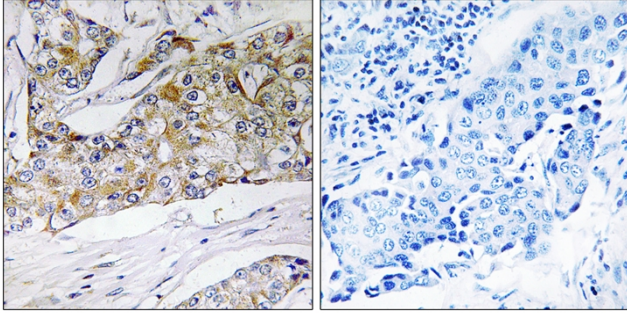
Nanjing BYabscience technology Co.,Ltd



Usage suggestions

This product can be used in immunological reaction related experiments. For more information, please consult technical personnel.

Products Images



Immunohistochemistry analysis of paraffin-embedded human breast carcinoma tissue, using DHR511 Antibody. The picture on the right is blocked with the synthesized peptide.