



# DHRS1 Polyclonal Antibody

<b>Catalog No</b>	BYab-02617
<b>Isotype</b>	IgG
<b>Reactivity</b>	Human;Mouse;Rat
<b>Applications</b>	IHC;IF;ELISA
<b>Gene Name</b>	DHRS1
<b>Protein Name</b>	Dehydrogenase/reductase SDR family member 1
<b>Immunogen</b>	Synthesized peptide derived from the Internal region of human DHRS1.
<b>Specificity</b>	DHRS1 Polyclonal Antibody detects endogenous levels of DHRS1 protein.
<b>Formulation</b>	Liquid in PBS containing 50% glycerol, 0.5% BSA and 0.02% sodium azide.
<b>Source</b>	Polyclonal, Rabbit,IgG
<b>Purification</b>	The antibody was affinity-purified from rabbit antiserum by affinity-chromatography using epitope-specific immunogen.
<b>Dilution</b>	IHC: 1/100 - 1/300. ELISA: 1/20000.. IF 1:50-200
<b>Concentration</b>	1 mg/ml
<b>Purity</b>	≥90%
<b>Storage Stability</b>	-20°C/1 year
<b>Synonyms</b>	DHRS1; Dehydrogenase/reductase SDR family member 1
<b>Observed Band</b>	
<b>Cell Pathway</b>	Endoplasmic reticulum . May be attached to the ER membrane by its C-terminus segment. .
<b>Tissue Specificity</b>	Detected in heart, liver, adrenal glands, and at low levels in skeletal muscle, kidney, pancreas and brain.
<b>Function</b>	similarity:Belongs to the short-chain dehydrogenases/reductases (SDR) family.,tissue specificity:Detected in heart and liver, and at low levels in skeletal muscle, kidney and pancreas.,
<b>Background</b>	This gene encodes a member of the short-chain dehydrogenases/reductases (SDR) family. The encoded enzyme contains a conserved catalytic domain and likely functions as an oxidoreductase. Multiple alternatively spliced variants, encoding the same protein, have been identified. [provided by RefSeq, Nov 2008],
<b>matters needing attention</b>	Avoid repeated freezing and thawing!

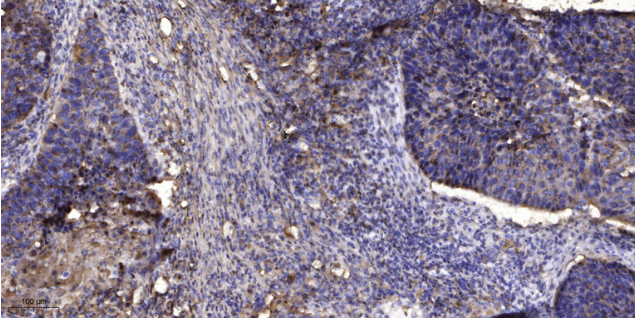
Nanjing BYabscience technology Co.,Ltd



### Usage suggestions

This product can be used in immunological reaction related experiments. For more information, please consult technical personnel.

## Products Images



Immunohistochemical analysis of paraffin-embedded human Squamous cell carcinoma of lung. 1, Antibody was diluted at 1:200(4° overnight). 2, Tris-EDTA,pH9.0 was used for antigen retrieval. 3,Secondary antibody was diluted at 1:200(room temperature, 45min).