



DD1 Polyclonal Antibody

Catalog No	BYab-02610
Isotype	IgG
Reactivity	Human;Rat;Mouse;
Applications	IHC;IF;ELISA
Gene Name	AKR1C1
Protein Name	Aldo-keto reductase family 1 member C1
Immunogen	Synthesized peptide derived from DD1 . at AA range: 30-110
Specificity	DD1 Polyclonal Antibody detects endogenous levels of DD1 protein.
Formulation	Liquid in PBS containing 50% glycerol, 0.5% BSA and 0.02% sodium azide.
Source	Polyclonal, Rabbit,IgG
Purification	The antibody was affinity-purified from rabbit antiserum by affinity-chromatography using epitope-specific immunogen.
Dilution	IHC: 1/100 - 1/300. ELISA: 1/10000.. IF 1:50-200
Concentration	1 mg/ml
Purity	≥90%
Storage Stability	-20°C/1 year
Synonyms	AKR1C1; DDH; DDH1; Aldo-keto reductase family 1 member C1; 20-alpha-hydroxysteroid dehydrogenase; 20-alpha-HSD; Chlordecone reductase homolog HAKRC; Dihydrodiol dehydrogenase 1/2; DD1/DD2; High-affinity hepatic bile acid-binding protein; HB
Observed Band	37kD
Cell Pathway	Cytoplasm, cytosol .
Tissue Specificity	Expressed in all tissues tested including liver, prostate, testis, adrenal gland, brain, uterus, mammary gland and keratinocytes. Highest levels found in liver, mammary gland and brain.
Function	catalytic activity:17-alpha,20-alpha-dihydroxypregn-4-en-3-one + NAD(P)(+) = 17-alpha-hydroxyprogesterone + NAD(P)H.,catalytic activity:Indan-1-ol + NAD(P)(+) = indanone + NAD(P)H.,catalytic activity:Trans-1,2-dihydrobenzene-1,2-diol + NADP(+) = catechol + NADPH.,enzyme regulation:Inhibited by hexestrol with an IC(50) of 9.5 uM, 1,10-phenanthroline with an IC(50) of 55 uM, 1,7-phenanthroline with an IC(50) of 72 uM, flufenamic acid with an IC(50) of 6.0 uM, indomethacin with an IC(50) of

Nanjing BYabscience technology Co.,Ltd



140 uM, ibuprofen with an IC(50) of 950 uM, lithocholic acid with an IC(50) of 25 uM, ursodeoxycholic acid with an IC(50) of 340 uM and chenodeoxycholic acid with an IC(50) of 570 uM.,function:Converts progesterone to its inactive form, 20-alpha-dihydroxyprogesterone (20-alpha-OHP). In the liver and intestine, may have a role in the transport of bile. May have a role in monitoring the intrahepatic bile a

Background

This gene encodes a member of the aldo/keto reductase superfamily, which consists of more than 40 known enzymes and proteins. These enzymes catalyze the conversion of aldehydes and ketones to their corresponding alcohols by utilizing NADH and/or NADPH as cofactors. The enzymes display overlapping but distinct substrate specificity. This enzyme catalyzes the reaction of progesterone to the inactive form 20-alpha-hydroxy-progesterone. This gene shares high sequence identity with three other gene members and is clustered with those three genes at chromosome 10p15-p14. [provided by RefSeq, Jul 2008],

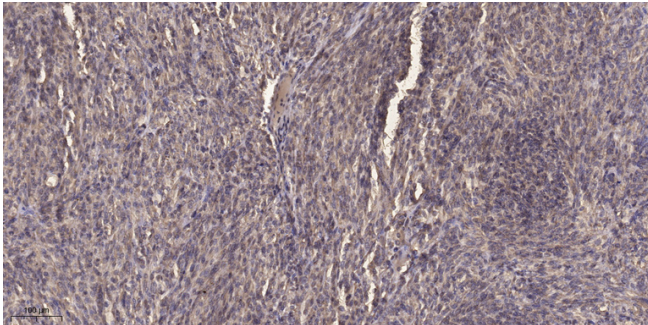
matters needing attention

Avoid repeated freezing and thawing!

Usage suggestions

This product can be used in immunological reaction related experiments. For more information, please consult technical personnel.

Products Images



Immunohistochemical analysis of paraffin-embedded human Colon cancer. 1, Antibody was diluted at 1:200(4° overnight). 2, Tris-EDTA,pH9.0 was used for antigen retrieval. 3,Secondary antibody was diluted at 1:200(room temperature, 45min).