



# CYP4Z1 Polyclonal Antibody

<b>Catalog No</b>	BYab-02606
<b>Isotype</b>	IgG
<b>Reactivity</b>	Human;Rat;Mouse;
<b>Applications</b>	WB;IHC;IF;ELISA
<b>Gene Name</b>	CYP4Z1
<b>Protein Name</b>	Cytochrome P450 4Z1
<b>Immunogen</b>	The antiserum was produced against synthesized peptide derived from human Cytochrome P450 4Z1. AA range:71-120
<b>Specificity</b>	CYP4Z1 Polyclonal Antibody detects endogenous levels of CYP4Z1 protein.
<b>Formulation</b>	Liquid in PBS containing 50% glycerol, 0.5% BSA and 0.02% sodium azide.
<b>Source</b>	Polyclonal, Rabbit,IgG
<b>Purification</b>	The antibody was affinity-purified from rabbit antiserum by affinity-chromatography using epitope-specific immunogen.
<b>Dilution</b>	Immunohistochemistry: 1/100 - 1/300. Immunofluorescence: 1/200 - 1/1000. ELISA: 1/20000. Not yet tested in other applications.
<b>Concentration</b>	1 mg/ml
<b>Purity</b>	≥90%
<b>Storage Stability</b>	-20°C/1 year
<b>Synonyms</b>	CYP4Z1; Cytochrome P450 4Z1; CYP4Z1
<b>Observed Band</b>	
<b>Cell Pathway</b>	Endoplasmic reticulum membrane ; Single-pass type II membrane protein . Microsome membrane ; Single-pass type II membrane protein .
<b>Tissue Specificity</b>	Preferentially detected in breast carcinoma tissue and mammary gland, whereas only marginal expression is found in all other tested tissues.
<b>Function</b>	oxidation reduction,
<b>Background</b>	CYP4Z1 encodes a member of the cytochrome P450 superfamily of enzymes. The cytochrome P450 proteins are monooxygenases which catalyze many reactions involved in drug metabolism and synthesis of cholesterol, steroids and other lipids. CYP4Z1 is part of a cluster of cytochrome P450 genes on chromosome 1p33.
<b>matters needing attention</b>	Avoid repeated freezing and thawing!

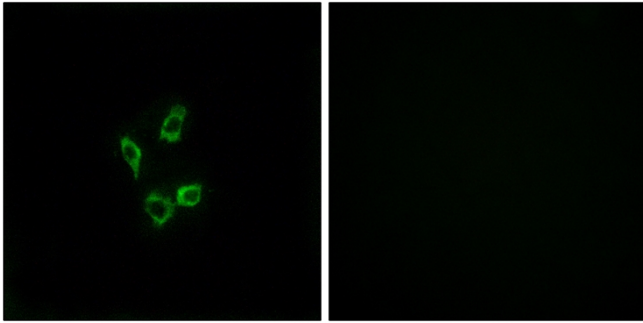
Nanjing BYabscience technology Co.,Ltd



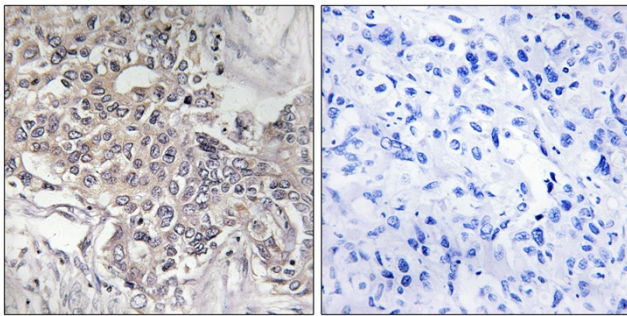
### Usage suggestions

This product can be used in immunological reaction related experiments. For more information, please consult technical personnel.

## Products Images



Immunofluorescence analysis of HUVEC cells, using Cytochrome P450 4Z1 Antibody. The picture on the right is blocked with the synthesized peptide.



Immunohistochemistry analysis of paraffin-embedded human liver carcinoma tissue, using Cytochrome P450 4Z1 Antibody. The picture on the right is blocked with the synthesized peptide.