



CYP4X1 Polyclonal Antibody

Catalog No	BYab-02605
Isotype	IgG
Reactivity	Human;Monkey
Applications	WB;IHC;IF;ELISA
Gene Name	CYP4X1
Protein Name	Cytochrome P450 4X1
Immunogen	The antiserum was produced against synthesized peptide derived from human Cytochrome P450 4X1. AA range:251-300
Specificity	CYP4X1 Polyclonal Antibody detects endogenous levels of CYP4X1 protein.
Formulation	Liquid in PBS containing 50% glycerol, 0.5% BSA and 0.02% sodium azide.
Source	Polyclonal, Rabbit,IgG
Purification	The antibody was affinity-purified from rabbit antiserum by affinity-chromatography using epitope-specific immunogen.
Dilution	WB: 1/500 - 1/2000. IHC: 1/100 - 1/300. ELISA: 1/40000.. IF 1:50-200
Concentration	1 mg/ml
Purity	≥90%
Storage Stability	-20°C/1 year
Synonyms	CYP4X1; Cytochrome P450 4X1; CYP4X1
Observed Band	50kD
Cell Pathway	Endoplasmic reticulum membrane ; Single-pass membrane protein . Microsome membrane ; Single-pass membrane protein .
Tissue Specificity	Expressed in brain, heart, kidney and skin and, at lower levels, in skeletal muscle and liver (PubMed:16478468, PubMed:18549450). In the brain, high levels are detected in amygdala and lower levels in globus pallidus and cerebellum (PubMed:18549450). In the heart, very high levels in aorta, but very low levels in other heart regions (PubMed:16478468, PubMed:18549450). Also expressed in breast, prostate and colon (PubMed:18549450).
Function	catalytic activity:RH + reduced flavoprotein + O(2) = ROH + oxidized flavoprotein + H(2)O.,cofactor:Heme group.,similarity:Belongs to the cytochrome P450 family.,
Background	This gene encodes a member of the cytochrome P450 superfamily of enzymes and is located within a cluster of genes belonging to this superfamily on chromosome 1. The cytochrome P450 proteins are monooxygenases which catalyze many reactions involved in drug metabolism and synthesis of cholesterol,

Nanjing BYabscience technology Co.,Ltd



steroids and other lipids. The expression pattern of a similar rat protein suggests that this protein may be involved in neurovascular function in the brain. Alternative splicing results in multiple transcript variants. [provided by RefSeq, Feb 2016],

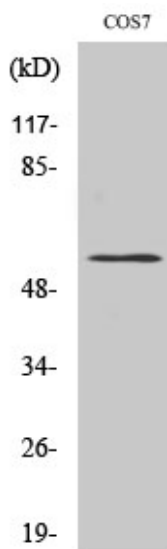
matters needing attention

Avoid repeated freezing and thawing!

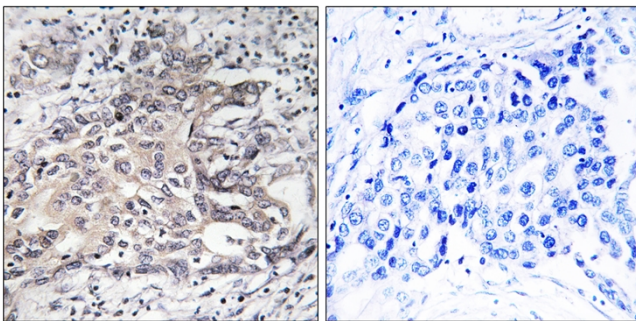
Usage suggestions

This product can be used in immunological reaction related experiments. For more information, please consult technical personnel.

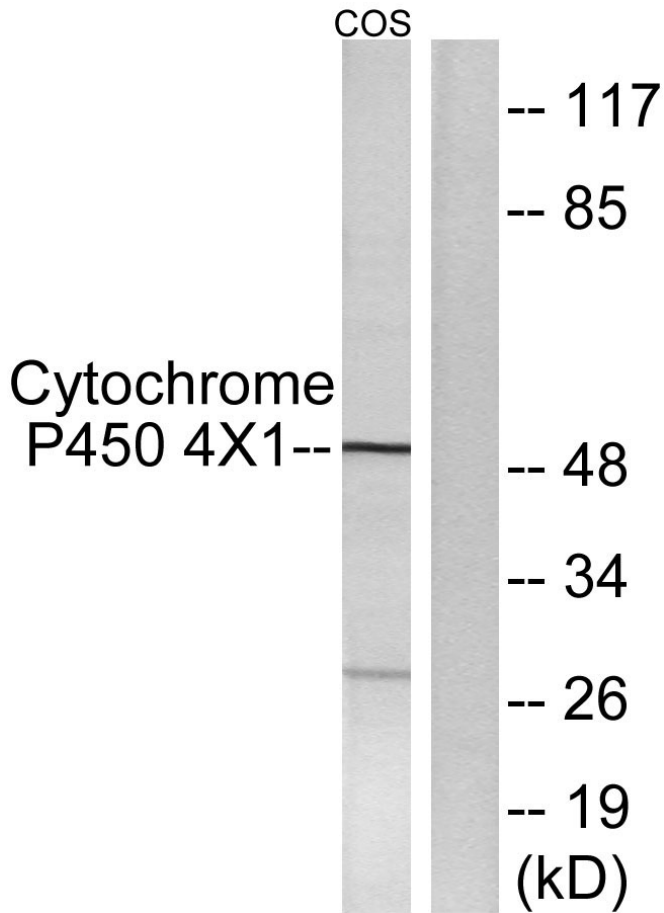
Products Images



Western Blot analysis of various cells using CYP4X1 Polyclonal Antibody



Immunohistochemistry analysis of paraffin-embedded human liver carcinoma tissue, using Cytochrome P450 4X1 Antibody. The picture on the right is blocked with the synthesized peptide.



Western blot analysis of lysates from COS7 cells, using Cytochrome P450 4X1 Antibody. The lane on the right is blocked with the synthesized peptide.