



CYP2J2 Polyclonal Antibody

Catalog No	BYab-02588
Isotype	IgG
Reactivity	Human;Monkey
Applications	WB;IHC;IF;ELISA
Gene Name	CYP2J2
Protein Name	Cytochrome P450 2J2
Immunogen	The antiserum was produced against synthesized peptide derived from human Cytochrome P450 2J2. AA range:231-280
Specificity	CYP2J2 Polyclonal Antibody detects endogenous levels of CYP2J2 protein.
Formulation	Liquid in PBS containing 50% glycerol, 0.5% BSA and 0.02% sodium azide.
Source	Polyclonal, Rabbit,IgG
Purification	The antibody was affinity-purified from rabbit antiserum by affinity-chromatography using epitope-specific immunogen.
Dilution	Western Blot: 1/500 - 1/2000. Immunohistochemistry: 1/100 - 1/300. Immunofluorescence: 1/200 - 1/1000. ELISA: 1/10000. Not yet tested in other applications.
Concentration	1 mg/ml
Purity	≥90%
Storage Stability	-20°C/1 year
Synonyms	CYP2J2; Cytochrome P450 2J2; Arachidonic acid epoxygenase; CYP11J2
Observed Band	58kD
Cell Pathway	Endoplasmic reticulum membrane; Peripheral membrane protein. Microsome membrane ; Peripheral membrane protein.
Tissue Specificity	Highly expressed in heart, present at lower levels in liver, kidney and skeletal muscle (at protein level).
Function	catalytic activity:RH + reduced flavoprotein + O(2) = ROH + oxidized flavoprotein + H(2)O.,cofactor:Heme group.,function:This enzyme metabolizes arachidonic acid predominantly via a NADPH-dependent olefin epoxidation to all four regioisomeric cis-epoxyeicosatrienoic acids. One of the predominant enzymes responsible for the epoxidation of endogenous cardiac arachidonic acid pools.,online information:CYP2J2 alleles.similarity:Belongs to the cytochrome P450 family.,tissue specificity:Highly expressed in heart, present at lower levels in liver, ileum, jejunum, colon, and kidney.,

Nanjing BYabscience technology Co.,Ltd



Background

This gene encodes a member of the cytochrome P450 superfamily of enzymes. The cytochrome P450 proteins are monooxygenases which catalyze many reactions involved in drug metabolism and synthesis of cholesterol, steroids and other lipids. This protein localizes to the endoplasmic reticulum and is thought to be the predominant enzyme responsible for epoxidation of endogenous arachidonic acid in cardiac tissue. Multiple transcript variants have been found for this gene. [provided by RefSeq, Jan 2016],

matters needing attention

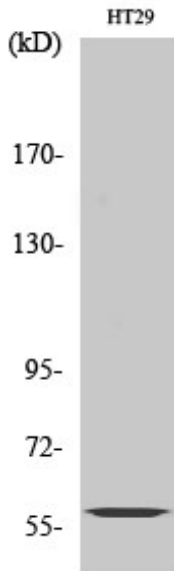
Avoid repeated freezing and thawing!

Usage suggestions

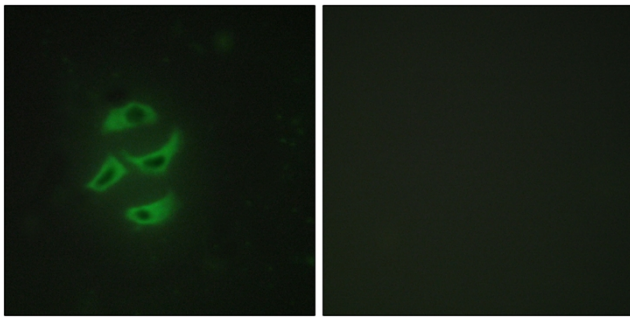
This product can be used in immunological reaction related experiments. For more information, please consult technical personnel.



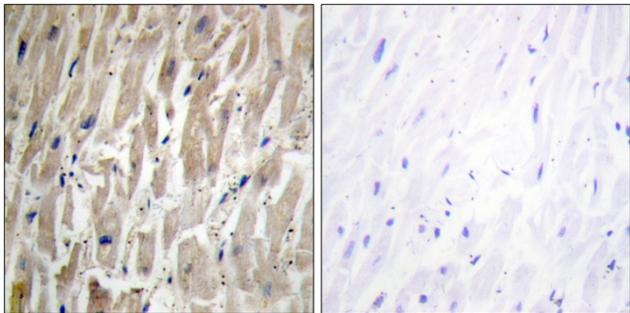
Products Images



Western Blot analysis of various cells using CYP2J2 Polyclonal Antibody

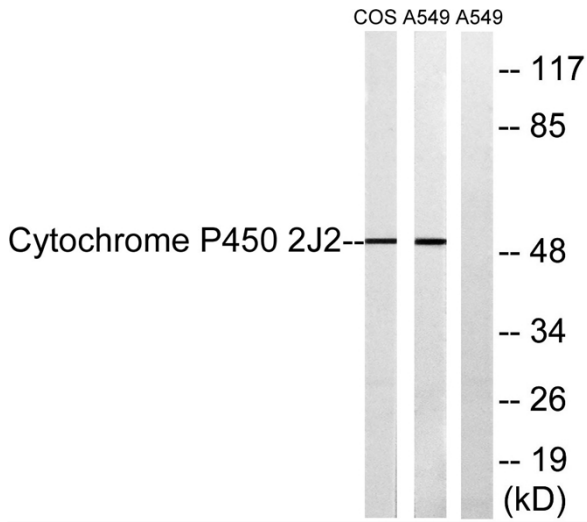


Immunofluorescence analysis of HepG2 cells, using Cytochrome P450 2J2 Antibody. The picture on the right is blocked with the synthesized peptide.



Immunohistochemistry analysis of paraffin-embedded human heart tissue, using Cytochrome P450 2J2 Antibody. The picture on the right is blocked with the synthesized peptide.

Nanjing BYabscience technology Co.,Ltd



Western blot analysis of lysates from A549 and COS7 cells, using Cytochrome P450 2J2 Antibody. The lane on the right is blocked with the synthesized peptide.