



CYP2D6 Polyclonal Antibody

Catalog No	BYab-02586
Isotype	IgG
Reactivity	Human
Applications	WB;IHC;IF;ELISA
Gene Name	CYP2D6
Protein Name	Cytochrome P450 2D6
Immunogen	The antiserum was produced against synthesized peptide derived from human Cytochrome P450 2D6. AA range:251-300
Specificity	CYP2D6 Polyclonal Antibody detects endogenous levels of CYP2D6 protein.
Formulation	Liquid in PBS containing 50% glycerol, 0.5% BSA and 0.02% sodium azide.
Source	Polyclonal, Rabbit,IgG
Purification	The antibody was affinity-purified from rabbit antiserum by affinity-chromatography using epitope-specific immunogen.
Dilution	WB: 1/500 - 1/2000. IHC: 1/100 - 1/300. ELISA: 1/10000.. IF 1:50-200
Concentration	1 mg/ml
Purity	≥90%
Storage Stability	-20°C/1 year
Synonyms	CYP2D6; CYP2DL1; Cytochrome P450 2D6; CYP2D6; Cytochrome P450-DB1; Debrisoquine 4-hydroxylase
Observed Band	55kD
Cell Pathway	Endoplasmic reticulum membrane; Peripheral membrane protein. Microsome membrane ; Peripheral membrane protein.
Tissue Specificity	Brain,Liver,PCR rescued clones,
Function	catalytic activity:RH + reduced flavoprotein + O(2) = ROH + oxidized flavoprotein + H(2)O.,cofactor:Heme group.,function:Responsible for the metabolism of many drugs and environmental chemicals that it oxidizes. It is involved in the metabolism of drugs such as antiarrhythmics, adrenoceptor antagonists, and tricyclic antidepressants.,induction:By pregnancy.,online information:CYP2D6 alleles,online information:CYP2D6 entry,polymorphism:Allele CYP2D6*7 was also known as CYP2D6E, allele CYP2D6*9 as CYP2D6C, allele CYP2D6*10 as CYP2D6J, allele CYP2D6*17 as CYP2D6Z.,polymorphism:Genetic variations in CYP2D6 are the cause of poor drug metabolism CYP2D6-related [MIM:608902]. The CYP2D6 gene is highly polymorphic. CYP2D6 activity ranges widely within a

Nanjing BYabscience technology Co.,Ltd



population comprising ultrarapid (UM), extensive (EM), intermediate (IM) and poor (PM) metabolizer phenotypes. UM and PM are those most at risk f

Background

This gene encodes a member of the cytochrome P450 superfamily of enzymes. The cytochrome P450 proteins are monooxygenases which catalyze many reactions involved in drug metabolism and synthesis of cholesterol, steroids and other lipids. This protein localizes to the endoplasmic reticulum and is known to metabolize as many as 25% of commonly prescribed drugs. Its substrates include antidepressants, antipsychotics, analgesics and antitussives, beta adrenergic blocking agents, antiarrhythmics and antiemetics. The gene is highly polymorphic in the human population; certain alleles result in the poor metabolizer phenotype, characterized by a decreased ability to metabolize the enzyme's substrates. Some individuals with the poor metabolizer phenotype have no functional protein since they carry 2 null alleles whereas in other individuals the gene is absent. This gene can vary in

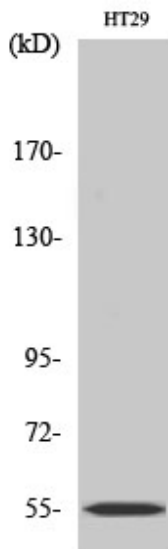
matters needing attention

Avoid repeated freezing and thawing!

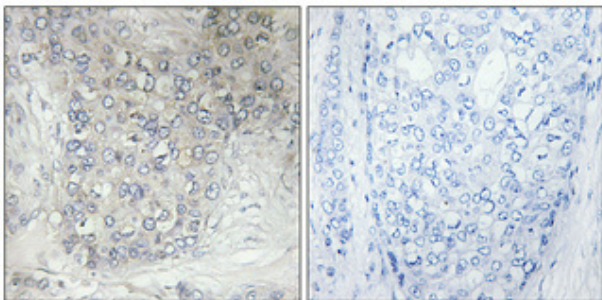
Usage suggestions

This product can be used in immunological reaction related experiments. For more information, please consult technical personnel.

Products Images

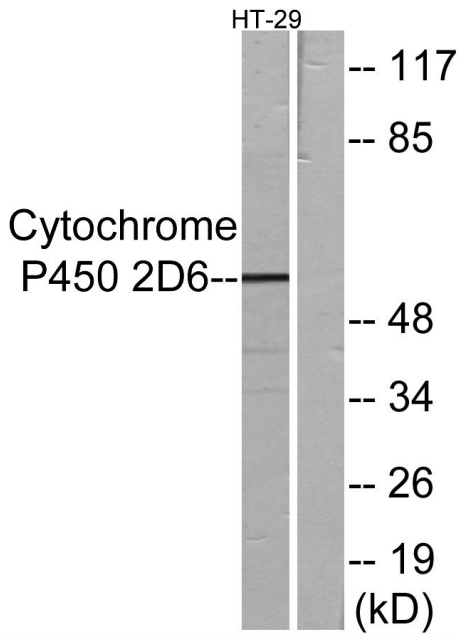


Western Blot analysis of various cells using CYP2D6 Polyclonal Antibody



Immunohistochemical analysis of paraffin-embedded Human breast cancer. Antibody was diluted at 1:100(4° overnight). High-pressure and temperature Tris-EDTA,pH8.0 was used for antigen retrieval. Negative contrl (right) obtained from antibody was pre-absorbed by immunogen peptide.

Nanjing BYabscience technology Co.,Ltd



Western blot analysis of lysates from HT-29 cells, using Cytochrome P450 2D6 Antibody. The lane on the right is blocked with the synthesized peptide.