



# CYP2A6 Polyclonal Antibody

<b>Catalog No</b>	BYab-02576
<b>Isotype</b>	IgG
<b>Reactivity</b>	Human;Rat;Mouse;;Chicken
<b>Applications</b>	WB;IF;ELISA
<b>Gene Name</b>	CYP2A6
<b>Protein Name</b>	Cytochrome P450 2A6
<b>Immunogen</b>	The antiserum was produced against synthesized peptide derived from human Cytochrome P450 2A6. AA range:1-50
<b>Specificity</b>	CYP2A6 Polyclonal Antibody detects endogenous levels of CYP2A6 protein.
<b>Formulation</b>	Liquid in PBS containing 50% glycerol, 0.5% BSA and 0.02% sodium azide.
<b>Source</b>	Polyclonal, Rabbit,IgG
<b>Purification</b>	The antibody was affinity-purified from rabbit antiserum by affinity-chromatography using epitope-specific immunogen.
<b>Dilution</b>	Western Blot: 1/500 - 1/2000. Immunofluorescence: 1/200 - 1/1000. ELISA: 1/20000. Not yet tested in other applications.
<b>Concentration</b>	1 mg/ml
<b>Purity</b>	≥90%
<b>Storage Stability</b>	-20°C/1 year
<b>Synonyms</b>	CYP2A6; CYP2A3; Cytochrome P450 2A6; 1; 4-cineole 2-exo-monooxygenase; CYP1IA6; Coumarin 7-hydroxylase; Cytochrome P450 IIA3; Cytochrome P450(I)
<b>Observed Band</b>	56kD
<b>Cell Pathway</b>	Endoplasmic reticulum membrane; Peripheral membrane protein. Microsome membrane; Peripheral membrane protein.
<b>Tissue Specificity</b>	Liver.
<b>Function</b>	catalytic activity:RH + reduced flavoprotein + O(2) = ROH + oxidized flavoprotein + H(2)O.,cofactor:Heme group.,function:Exhibits a high coumarin 7-hydroxylase activity. Can act in the hydroxylation of the anti-cancer drugs cyclophosphamide and ifosphamide. Competent in the metabolic activation of aflatoxin B1. Constitutes the major nicotine C-oxidase.,induction:By phenobarbital and dexamethasone.,online information:CYP2A6 alleles,online information:CYP2A6 entry,similarity:Belongs to the cytochrome P450 family.,tissue specificity:Liver.,
<b>Background</b>	This gene, CYP2A6, encodes a member of the cytochrome P450 superfamily of enzymes. The cytochrome P450 proteins are monooxygenases which catalyze

Nanjing BYabscience technology Co.,Ltd



many reactions involved in drug metabolism and synthesis of cholesterol, steroids and other lipids. This protein localizes to the endoplasmic reticulum and its expression is induced by phenobarbital. The enzyme is known to hydroxylate coumarin, and also metabolizes nicotine, aflatoxin B1, nitrosamines, and some pharmaceuticals. Individuals with certain allelic variants are said to have a poor metabolizer phenotype, meaning they do not efficiently metabolize coumarin or nicotine. This gene is part of a large cluster of cytochrome P450 genes from the CYP2A, CYP2B and CYP2F subfamilies on chromosome 19q. The gene was formerly referred to as CYP2A3; however, it has been renamed CYP2A6. [provided by RefSeq, Jul 2008],

**matters needing attention**

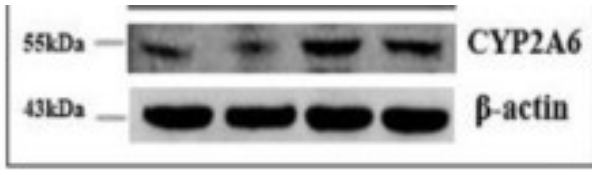
Avoid repeated freezing and thawing!

**Usage suggestions**

This product can be used in immunological reaction related experiments. For more information, please consult technical personnel.

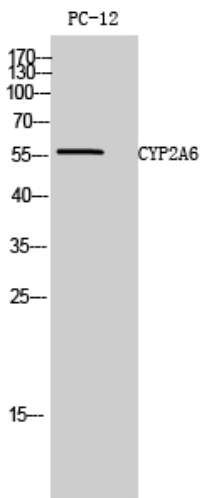


## Products Images

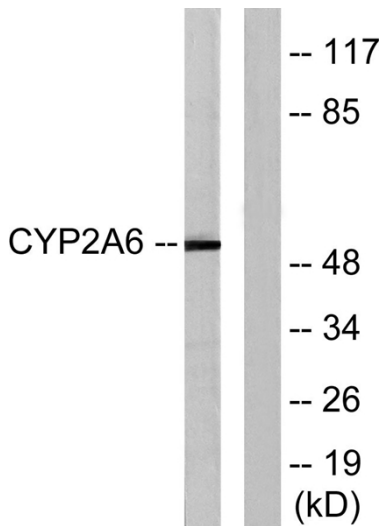


Muhammad, Ishfaq, et al. "Dual role of dietary curcumin through attenuating AFB1-induced oxidative stress and liver injury via modulating liver phase-I and phase-II enzymes involved in AFB1 bioactivation and detoxification." *Frontiers in pharmacology* 9 (2018): 554.

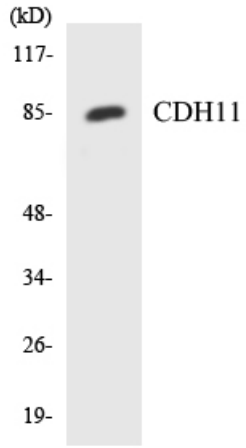
Western Blot analysis of PC-12 cells using CYP2A6 Polyclonal Antibody diluted at 1:1000



Western blot analysis of lysates from Jurkat cells, using Cytochrome P450 2A6 Antibody. The lane on the right is blocked with the synthesized peptide.



Nanjing BYabscience technology Co.,Ltd



Western blot analysis of the lysates from RAW264.7 cells using CDH11 antibody.