



CYP2A13 Polyclonal Antibody

Catalog No	BYab-02575
Isotype	IgG
Reactivity	Human;Rat;Mouse;
Applications	WB;IHC;IF;ELISA
Gene Name	CYP2A13
Protein Name	Cytochrome P450 2A13
Immunogen	The antiserum was produced against synthesized peptide derived from human Cytochrome P450 2A13. AA range:311-360
Specificity	CYP2A13 Polyclonal Antibody detects endogenous levels of CYP2A13 protein.
Formulation	Liquid in PBS containing 50% glycerol, 0.5% BSA and 0.02% sodium azide.
Source	Polyclonal, Rabbit,IgG
Purification	The antibody was affinity-purified from rabbit antiserum by affinity-chromatography using epitope-specific immunogen.
Dilution	Western Blot: 1/500 - 1/2000. Immunohistochemistry: 1/100 - 1/300. Immunofluorescence: 1/200 - 1/1000. ELISA: 1/20000. Not yet tested in other applications.
Concentration	1 mg/ml
Purity	≥90%
Storage Stability	-20°C/1 year
Synonyms	CYP2A13; Cytochrome P450 2A13; CYP11A13
Observed Band	56kD
Cell Pathway	Endoplasmic reticulum membrane; Peripheral membrane protein. Microsome membrane; Peripheral membrane protein.
Tissue Specificity	Expressed in liver and a number of extrahepatic tissues, including nasal mucosa, lung, trachea, brain, mammary gland, prostate, testis, and uterus, but not in heart, kidney, bone marrow, colon, small intestine, spleen, stomach, thymus, or skeletal muscle.
Function	catalytic activity:RH + reduced flavoprotein + O(2) = ROH + oxidized flavoprotein + H(2)O.,cofactor:Heme group.,function:Exhibits a coumarin 7-hydroxylase activity. Active in the metabolic activation of hexamethylphosphoramide, N,N-dimethylaniline, 2'-methoxyacetophenone, N-nitrosomethylphenylamine, and the tobacco-specific carcinogen, 4-(methylnitrosamino)-1-(3-pyridyl)-1-butanone.,online information:CYP2A13 alleles,polymorphism:The frequencies of the Cys-257 allele in white, black,

Nanjing BYabscience technology Co.,Ltd



Hispanic, and Asian individuals are 1.9%, 14.4%, 5.8%, and 7.7%, respectively. The Cys-257 variant is 37 to 56% less active than the wild-type Arg-257 protein toward all substrates tested.,similarity:Belongs to the cytochrome P450 family.,tissue specificity:Expressed in liver and a number of extrahepatic tissues, including nasal mucosa, lung, trachea, brain, mammary gland, prostate, testis, and uterus, but n

Background

cytochrome P450 family 2 subfamily A member 13(CYP2A13) Homo sapiens This gene encodes a member of the cytochrome P450 superfamily of enzymes. The cytochrome P450 proteins are monooxygenases which catalyze many reactions involved in drug metabolism and synthesis of cholesterol, steroids and other lipids. This protein localizes to the endoplasmic reticulum. Although its endogenous substrate has not been determined, it is known to metabolize 4-(methylnitrosamino)-1-(3-pyridyl)-1-butanone, a major nitrosamine specific to tobacco. This gene is part of a large cluster of cytochrome P450 genes from the CYP2A, CYP2B and CYP2F subfamilies on chromosome 19q. [provided by RefSeq, Jul 2008],

matters needing attention

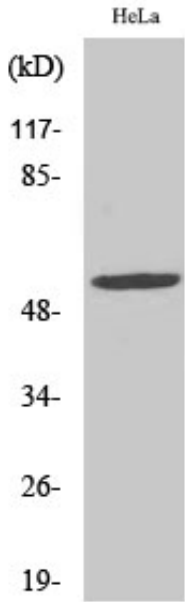
Avoid repeated freezing and thawing!

Usage suggestions

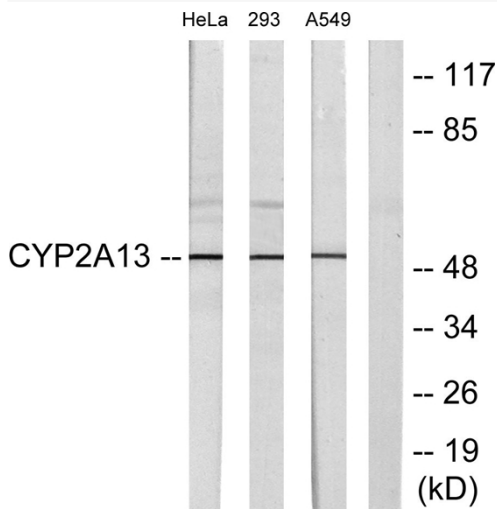
This product can be used in immunological reaction related experiments. For more information, please consult technical personnel.



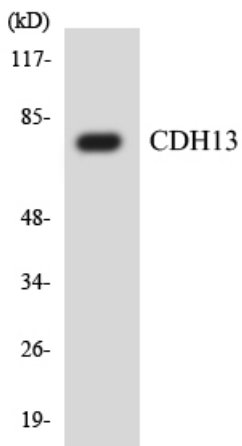
Products Images



Western Blot analysis of various cells using CYP2A13 Polyclonal Antibody diluted at 1:2000

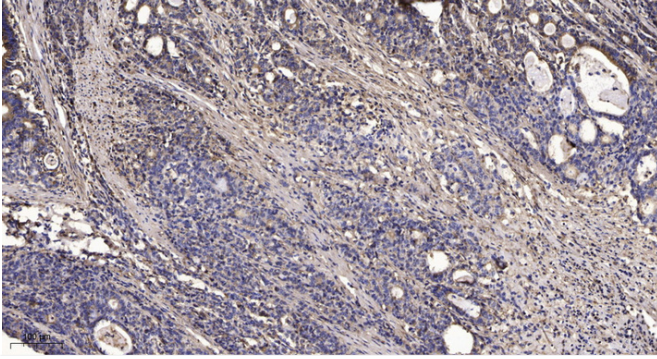


Western blot analysis of lysates from HeLa, 293, and A549 cells, using Cytochrome P450 2A13 Antibody. The lane on the right is blocked with the synthesized peptide.



Western blot analysis of the lysates from HT-29 cells using CDH13 antibody.

Nanjing BYabscience technology Co.,Ltd



Immunohistochemical analysis of paraffin-embedded human Gastric adenocarcinoma. 1, Antibody was diluted at 1:200(4° overnight). 2, Tris-EDTA,pH9.0 was used for antigen retrieval. 3,Secondary antibody was diluted at 1:200(room temperature, 45min).