



CYP26A1 Polyclonal Antibody

Catalog No	BYab-02571
Isotype	IgG
Reactivity	Human;Mouse;Rat
Applications	WB;IF;ELISA
Gene Name	CYP26A1
Protein Name	Cytochrome P450 26A1
Immunogen	The antiserum was produced against synthesized peptide derived from human Cytochrome P450 26A1. AA range:251-300
Specificity	CYP26A1 Polyclonal Antibody detects endogenous levels of CYP26A1 protein.
Formulation	Liquid in PBS containing 50% glycerol, 0.5% BSA and 0.02% sodium azide.
Source	Polyclonal, Rabbit,IgG
Purification	The antibody was affinity-purified from rabbit antiserum by affinity-chromatography using epitope-specific immunogen.
Dilution	Western Blot: 1/500 - 1/2000. Immunofluorescence: 1/200 - 1/1000. ELISA: 1/20000. Not yet tested in other applications.
Concentration	1 mg/ml
Purity	≥90%
Storage Stability	-20°C/1 year
Synonyms	CYP26A1; CYP26; P450RAI1; Cytochrome P450 26A1; Cytochrome P450 retinoic acid-inactivating 1; Cytochrome P450RAI; hP450RAI; Retinoic acid 4-hydroxylase; Retinoic acid-metabolizing cytochrome
Observed Band	56kD
Cell Pathway	Endoplasmic reticulum membrane ; Peripheral membrane protein. Microsome membrane ; Peripheral membrane protein.
Tissue Specificity	Expressed in most fetal and adult tissues with highest levels in adult liver, heart, pituitary gland, adrenal gland, placenta and regions of the brain (PubMed:9826557). Expressed at high levels in lung, pancreas, skin and uterus (at protein level) (PubMed:22020119). Lower expression level is detected in spleen, kidney, intestine and adipose tissue (at protein level) (PubMed:22020119).
Function	cofactor:Heme group.,function:Plays a key role in retinoic acid metabolism. Acts on retinoids, including all-trans-retinoic acid (RA) and its stereoisomer 9-cis-RA. Capable of both 4-hydroxylation and 18-hydroxylation. Responsible for generation of several hydroxylated forms of RA, including 4-OH-RA, 4-oxo-RA and

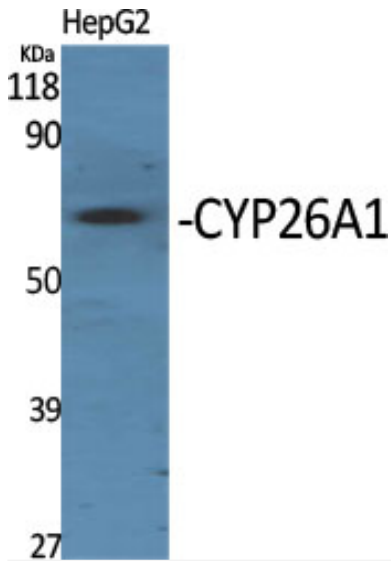
Nanjing BYabscience technology Co.,Ltd



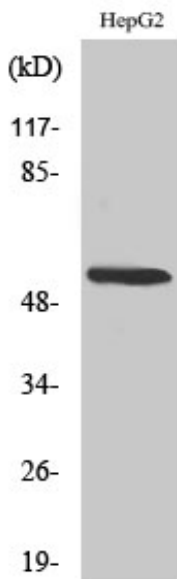
	18-OH-RA.,induction:By retinoic acid.,similarity:Belongs to the cytochrome P450 family.,tissue specificity:Highest levels in adult liver, heart, pituitary gland, adrenal gland, placenta and regions of the brain.,
Background	cytochrome P450 family 26 subfamily A member 1(CYP26A1) Homo sapiens This gene encodes a member of the cytochrome P450 superfamily of enzymes. The cytochrome P450 proteins are monooxygenases which catalyze many reactions involved in drug metabolism and synthesis of cholesterol, steroids and other lipids. This endoplasmic reticulum protein acts on retinoids, including all-trans-retinoic acid (RA), with both 4-hydroxylation and 18-hydroxylation activities. This enzyme regulates the cellular level of retinoic acid which is involved in regulation of gene expression in both embryonic and adult tissues. Two alternatively spliced transcript variants of this gene, which encode the distinct isoforms, have been reported. [provided by RefSeq, Jul 2008],
matters needing attention	Avoid repeated freezing and thawing!
Usage suggestions	This product can be used in immunological reaction related experiments. For more information, please consult technical personnel.



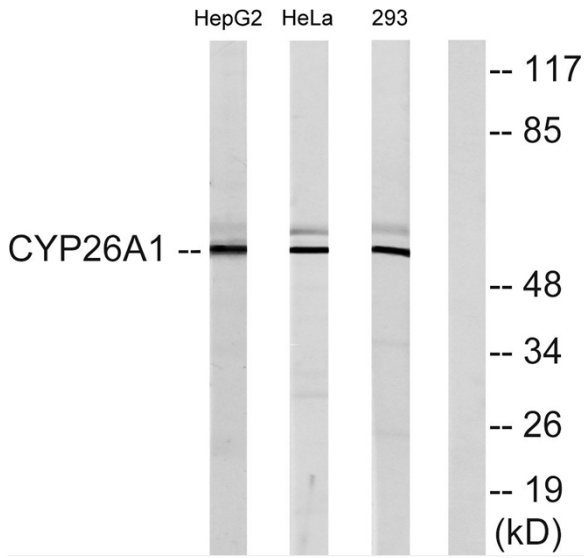
Products Images



Western Blot analysis of various cells using CYP26A1 Polyclonal Antibody diluted at 1:1000



Western Blot analysis of 293 cells using CYP26A1 Polyclonal Antibody diluted at 1:1000



Western blot analysis of lysates from HepG2, HeLa, and 293 cells, using Cytochrome P450 26A1 Antibody. The lane on the right is blocked with the synthesized peptide.