



CYP1B1 Polyclonal Antibody

Catalog No	BYab-02565
Isotype	IgG
Reactivity	Human;Rat;Mouse;
Applications	WB;ELISA
Gene Name	CYP1B1
Protein Name	Cytochrome P450 1B1
Immunogen	Synthesized peptide derived from the Internal region of human CYP1B1.
Specificity	CYP1B1 Polyclonal Antibody detects endogenous levels of CYP1B1 protein.
Formulation	Liquid in PBS containing 50% glycerol, 0.5% BSA and 0.02% sodium azide.
Source	Polyclonal, Rabbit,IgG
Purification	The antibody was affinity-purified from rabbit antiserum by affinity-chromatography using epitope-specific immunogen.
Dilution	Western Blot: 1/500 - 1/2000. ELISA: 1/40000. Not yet tested in other applications.
Concentration	1 mg/ml
Purity	≥90%
Storage Stability	-20°C/1 year
Synonyms	CYP1B1; Cytochrome P450 1B1; CYP1B1
Observed Band	60kD
Cell Pathway	Endoplasmic reticulum membrane ; Peripheral membrane protein . Microsome membrane ; Peripheral membrane protein . Mitochondrion . Located primarily in endoplasmic reticulum. Upon treatment with 2,3,7,8-tetrachlorodibenzo-p-dioxin (TCDD), CYP1B1 is also targeted to mitochondria. .
Tissue Specificity	Expressed in heart, brain, lung, skeletal muscle, kidney, spleen, thymus, prostate, testis, ovary, small intestine, colon, and peripheral blood leukocytes (PubMed:8175734). Expressed in retinal endothelial cells and umbilical vein endothelial cells (at protein level) (PubMed:19005183).
Function	catalytic activity:RH + reduced flavoprotein + O(2) = ROH + oxidized flavoprotein + H(2)O.,cofactor:Heme group.,disease:Defects in CYP1B1 are a cause of Peters anomaly [MIM:604229]. Peters anomaly is a congenital defect of the anterior chamber of the eye.,disease:Defects in CYP1B1 are a cause of primary open angle glaucoma (POAG) [MIM:137760]. POAG is a complex and genetically heterogeneous ocular disorder characterized by a specific pattern of optic nerve and visual field defects. The angle of the anterior chamber of the eye is open, and

Nanjing BYabscience technology Co.,Ltd



usually the intraocular pressure is increased. The disease is asymptomatic until the late stages, by which time significant and irreversible optic nerve damage has already taken place. In some cases, POAG shows digenic inheritance involving mutations in CYP1B1 and MYOC genes.,disease:Defects in CYP1B1 are the cause of primary congenital glaucoma type 3A

Background

This gene encodes a member of the cytochrome P450 superfamily of enzymes. The cytochrome P450 proteins are monooxygenases which catalyze many reactions involved in drug metabolism and synthesis of cholesterol, steroids and other lipids. The enzyme encoded by this gene localizes to the endoplasmic reticulum and metabolizes procarcinogens such as polycyclic aromatic hydrocarbons and 17beta-estradiol. Mutations in this gene have been associated with primary congenital glaucoma; therefore it is thought that the enzyme also metabolizes a signaling molecule involved in eye development, possibly a steroid. [provided by RefSeq, Jul 2008],

matters needing attention

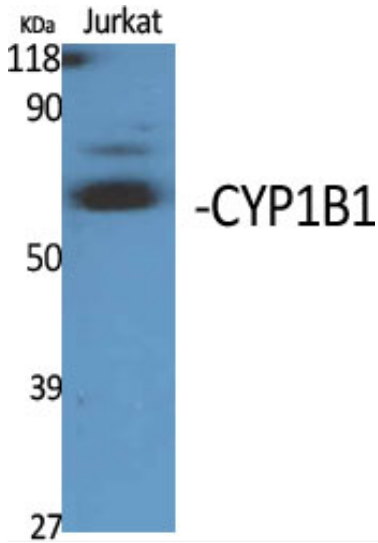
Avoid repeated freezing and thawing!

Usage suggestions

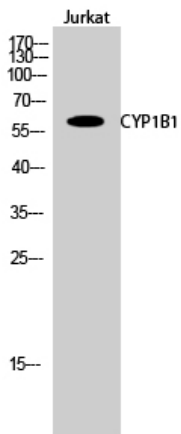
This product can be used in immunological reaction related experiments. For more information, please consult technical personnel.



Products Images



Western Blot analysis of various cells using CYP1B1 Polyclonal Antibody



Western Blot analysis of Jurkat cells using CYP1B1 Polyclonal Antibody