



# CYB5R1 Polyclonal Antibody

<b>Catalog No</b>	BYab-02557
<b>Isotype</b>	IgG
<b>Reactivity</b>	Human;Mouse;Rat
<b>Applications</b>	WB;ELISA
<b>Gene Name</b>	CYB5R1
<b>Protein Name</b>	NADH-cytochrome b5 reductase 1
<b>Immunogen</b>	The antiserum was produced against synthesized peptide derived from human CYB5R1. AA range:9-58
<b>Specificity</b>	CYB5R1 Polyclonal Antibody detects endogenous levels of CYB5R1 protein.
<b>Formulation</b>	Liquid in PBS containing 50% glycerol, 0.5% BSA and 0.02% sodium azide.
<b>Source</b>	Polyclonal, Rabbit,IgG
<b>Purification</b>	The antibody was affinity-purified from rabbit antiserum by affinity-chromatography using epitope-specific immunogen.
<b>Dilution</b>	Western Blot: 1/500 - 1/2000. ELISA: 1/20000. Not yet tested in other applications.
<b>Concentration</b>	1 mg/ml
<b>Purity</b>	≥90%
<b>Storage Stability</b>	-20°C/1 year
<b>Synonyms</b>	CYB5R1; NQO3A2; NADH-cytochrome b5 reductase 1; b5R.1; Humb5R2; NAD(P)H:quinone oxidoreductase type 3 polypeptide A2
<b>Observed Band</b>	34kD
<b>Cell Pathway</b>	Membrane ; Single-pass membrane protein .
<b>Tissue Specificity</b>	Widely expressed.
<b>Function</b>	catalytic activity:NADH + 2 ferricytochrome b5 = NAD(+) + H(+) + 2 ferrocyanochrome b5.,cofactor:FAD.,function:NADH-cytochrome b5 reductases are involved in desaturation and elongation of fatty acids, cholesterol biosynthesis, drug metabolism, and, in erythrocyte, methemoglobin reduction.,similarity:Belongs to the flavoprotein pyridine nucleotide cytochrome reductase family.,similarity:Contains 1 FAD-binding FR-type domain.,tissue specificity:Widely expressed.,
<b>Background</b>	catalytic activity:NADH + 2 ferricytochrome b5 = NAD(+) + H(+) + 2 ferrocyanochrome b5.,cofactor:FAD.,function:NADH-cytochrome b5 reductases are

Nanjing BYabscience technology Co.,Ltd



involved in desaturation and elongation of fatty acids, cholesterol biosynthesis, drug metabolism, and, in erythrocyte, methemoglobin reduction.,similarity:Belongs to the flavoprotein pyridine nucleotide cytochrome reductase family.,similarity:Contains 1 FAD-binding FR-type domain.,tissue specificity:Widely expressed.,

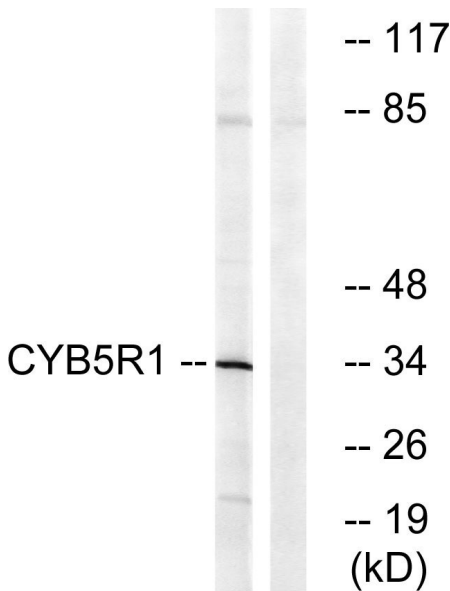
**matters needing attention**

Avoid repeated freezing and thawing!

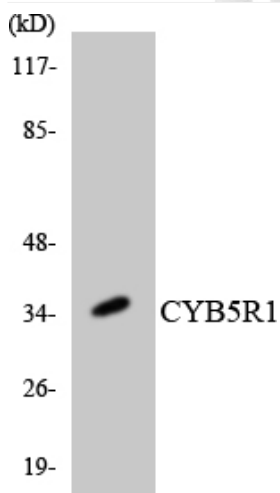
**Usage suggestions**

This product can be used in immunological reaction related experiments. For more information, please consult technical personnel.

**Products Images**



Western blot analysis of lysates from RAW264.7 cells, using CYB5R1 Antibody. The lane on the right is blocked with the synthesized peptide.



Western blot analysis of the lysates from K562 cells using CYB5R1 antibody.

**Nanjing BYabscience technology Co.,Ltd**