



cPLA2-ε Polyclonal Antibody

Catalog No	BYab-02553
Isotype	IgG
Reactivity	Human;Rat;Mouse;
Applications	IHC;IF;ELISA
Gene Name	PLA2G4E
Protein Name	Cytosolic phospholipase A2 epsilon
Immunogen	The antiserum was produced against synthesized peptide derived from human PLA2G4E. AA range:401-450
Specificity	cPLA2-ε Polyclonal Antibody detects endogenous levels of cPLA2-ε protein.
Formulation	Liquid in PBS containing 50% glycerol, 0.5% BSA and 0.02% sodium azide.
Source	Polyclonal, Rabbit,IgG
Purification	The antibody was affinity-purified from rabbit antiserum by affinity-chromatography using epitope-specific immunogen.
Dilution	IHC: 1/100 - 1/300. ELISA: 1/40000.. IF 1:50-200
Concentration	1 mg/ml
Purity	≥90%
Storage Stability	-20°C/1 year
Synonyms	PLA2G4E; Cytosolic phospholipase A2 epsilon; cPLA2-epsilon; Phospholipase A2 group IVE
Observed Band	
Cell Pathway	Cytoplasm, cytosol . Early endosome membrane ; Peripheral membrane protein ; Cytoplasmic side . Lysosome membrane ; Peripheral membrane protein ; Cytoplasmic side . Cell membrane ; Peripheral membrane protein; Cytoplasmic side . Targeted to clathrin-independent endocytotic vesicles through binding to phosphoinositides, especially phosphatidylinositol 4,5-bisphosphates. .
Tissue Specificity	Heart,Lung,Tongue,
Function	catalytic activity:Phosphatidylcholine + H(2)O = 1-acylglycerophosphocholine + a carboxylate.,domain:The N-terminal C2 domain associates with lipid membranes and mediates its regulation by presenting the active site to its substrate in response to elevations of cytosolic Ca(2+).,enzyme regulation:Stimulated by cytosolic Ca(2+).,function:Calcium-dependent phospholipase A2 that selectively hydrolyzes glycerophospholipids in the sn-2 position.,similarity:Contains 1 C2 domain.,similarity:Contains 1 PLA2c domain.,subcellular location:Translocates to

Nanjing BYabscience technology Co.,Ltd



lysosomal membranes in a calcium-dependent fashion.,

Background

catalytic activity:Phosphatidylcholine + H(2)O = 1-acylglycerophosphocholine + a carboxylate.,domain:The N-terminal C2 domain associates with lipid membranes and mediates its regulation by presenting the active site to its substrate in response to elevations of cytosolic Ca(2+).,enzyme regulation:Stimulated by cytosolic Ca(2+).,function:Calcium-dependent phospholipase A2 that selectively hydrolyzes glycerophospholipids in the sn-2 position.,similarity:Contains 1 C2 domain.,similarity:Contains 1 PLA2c domain.,subcellular location:Translocates to lysosomal membranes in a calcium-dependent fashion.,

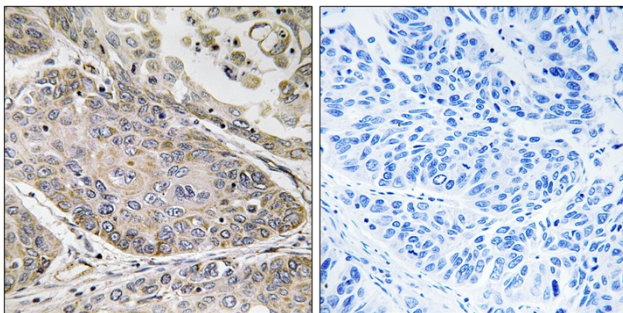
matters needing attention

Avoid repeated freezing and thawing!

Usage suggestions

This product can be used in immunological reaction related experiments. For more information, please consult technical personnel.

Products Images



Immunohistochemistry analysis of paraffin-embedded human lung carcinoma, using PLA2G4E Antibody. The picture on the right is blocked with the synthesized peptide.