



CCS Polyclonal Antibody

Catalog No	BYab-02533
Isotype	IgG
Reactivity	Human;Rat;Mouse;
Applications	WB;IHC;IF;ELISA
Gene Name	CCS
Protein Name	Copper chaperone for superoxide dismutase
Immunogen	The antiserum was produced against synthesized peptide derived from human CCS. AA range:225-274
Specificity	CCS Polyclonal Antibody detects endogenous levels of CCS protein.
Formulation	Liquid in PBS containing 50% glycerol, 0.5% BSA and 0.02% sodium azide.
Source	Polyclonal, Rabbit,IgG
Purification	The antibody was affinity-purified from rabbit antiserum by affinity-chromatography using epitope-specific immunogen.
Dilution	WB: 1/500 - 1/2000. IHC: 1/100 - 1/300. ELISA: 1/10000.. IF 1:50-200
Concentration	1 mg/ml
Purity	≥90%
Storage Stability	-20°C/1 year
Synonyms	CCS; Copper chaperone for superoxide dismutase; Superoxide dismutase copper chaperone
Observed Band	32kD
Cell Pathway	Cytoplasm .
Tissue Specificity	Ubiquitous.
Function	cofactor: Binds 1 zinc ion per subunit.,cofactor: Binds 2 copper ions per subunit.,function: Delivers copper to copper zinc superoxide dismutase (SOD1).,similarity: Contains 1 HMA domain.,similarity: In the C-terminal section; belongs to the Cu-Zn superoxide dismutase family.,subunit: Homodimer, and heterodimer with SOD1.,tissue specificity: Ubiquitous.,
Background	Copper chaperone for superoxide dismutase specifically delivers Cu to copper/zinc superoxide dismutase and may activate copper/zinc superoxide dismutase through direct insertion of the Cu cofactor. [provided by RefSeq, Jul 2008],

Nanjing BYabscience technology Co.,Ltd



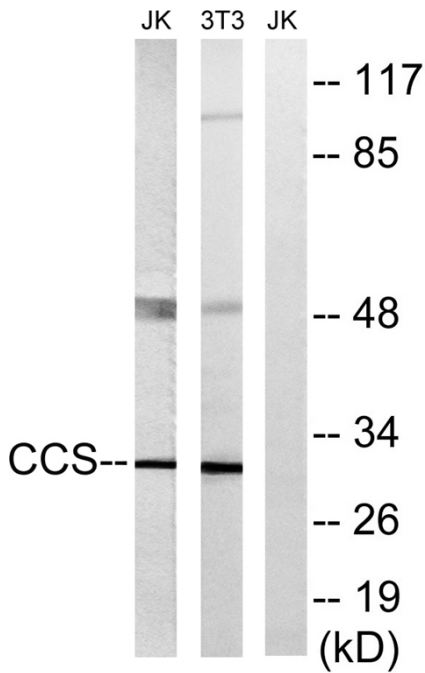
matters needing attention

Avoid repeated freezing and thawing!

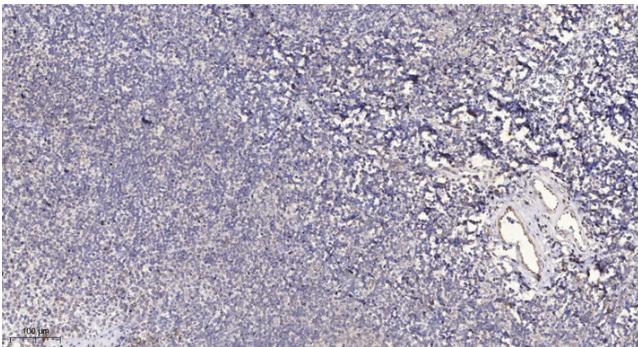
Usage suggestions

This product can be used in immunological reaction related experiments. For more information, please consult technical personnel.

Products Images



Western blot analysis of lysates from NIH/3T3 and Jurkat cells, using CCS Antibody. The lane on the right is blocked with the synthesized peptide.



Immunohistochemical analysis of paraffin-embedded human tonsil. 1, Antibody was diluted at 1:200(4° overnight). 2, Tris-EDTA, pH9.0 was used for antigen retrieval. 3, Secondary antibody was diluted at 1:200(room temperature, 30min).

Nanjing BYabscience technology Co.,Ltd

网址: www.njbybio.com

官方热线: 025-5229-8998

监督电话: 15950492658