



Cathepsin G Polyclonal Antibody

Catalog No	BYab-02531
Isotype	IgG
Reactivity	Human;Rat;Mouse;
Applications	WB;ELISA
Gene Name	CTSG
Protein Name	Cathepsin G
Immunogen	The antiserum was produced against synthesized peptide derived from human Cathepsin G. AA range:67-116
Specificity	Cathepsin G Polyclonal Antibody detects endogenous levels of Cathepsin G protein.
Formulation	Liquid in PBS containing 50% glycerol, 0.5% BSA and 0.02% sodium azide.
Source	Polyclonal, Rabbit,IgG
Purification	The antibody was affinity-purified from rabbit antiserum by affinity-chromatography using epitope-specific immunogen.
Dilution	Western Blot: 1/500 - 1/2000. ELISA: 1/40000. Not yet tested in other applications.
Concentration	1 mg/ml
Purity	≥90%
Storage Stability	-20°C/1 year
Synonyms	CTSG; Cathepsin G; CG
Observed Band	22kD
Cell Pathway	Cell membrane ; Peripheral membrane protein . Cytoplasmic granule . Secreted . Cytoplasm, cytosol . Lysosome . Nucleus . Secreted by activated neutrophils (PubMed:3390156). Detected in synovial fluid (PubMed:32144329). Localizes to lysosomes in B cells where it is not endogenously synthesized but is internalized from the cell membrane (PubMed:15100291). Localizes to the nucleus during apoptosis (PubMed:11259672). .
Tissue Specificity	Expressed in neutrophils (at protein level) (PubMed:3799965). Expressed in B cells (PubMed:15100291).
Function	catalytic activity:Specificity similar to chymotrypsin C.,enzyme regulation:Inhibited by soybean trypsin inhibitor, benzamidine, the synthetic peptide R13K, Z-Gly-Leu-Phe-CH ₂ Cl and phenylmethylsulfonyl fluoride. Inhibited by LPS from P.aeruginosa but not by LPS from S.minnesota.,function:Serine protease with trypsin- and chymotrypsin-like specificity. Has antibacterial activity against the Gram-negative bacterium P.aeruginosa, antibacterial activity is inhibited by LPS

Nanjing BYabscience technology Co.,Ltd



from P.aeruginosa, Z-Gly-Leu-Phe-CH₂Cl and phenylmethylsulfonyl fluoride.,similarity:Belongs to the peptidase S1 family.,similarity:Contains 1 peptidase S1 domain.,

Background

The protein encoded by this gene, a member of the peptidase S1 protein family, is found in azurophil granules of neutrophilic polymorphonuclear leukocytes. The encoded protease has a specificity similar to that of chymotrypsin C, and may participate in the killing and digestion of engulfed pathogens, and in connective tissue remodeling at sites of inflammation. In addition, the encoded protein is antimicrobial, with bacteriocidal activity against *S. aureus* and *N. gonorrhoeae*. Transcript variants utilizing alternative polyadenylation signals exist for this gene. [provided by RefSeq, Sep 2014],

matters needing attention

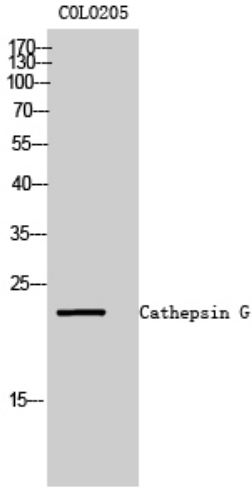
Avoid repeated freezing and thawing!

Usage suggestions

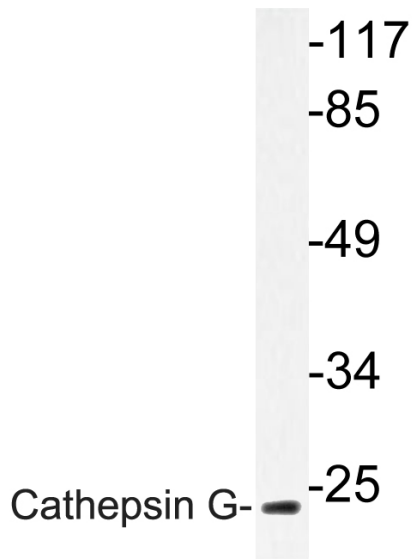
This product can be used in immunological reaction related experiments. For more information, please consult technical personnel.



Products Images



Western Blot analysis of COLO205 cells using Cathepsin G Polyclonal Antibody



Western blot analysis of lysate from COLO cells, using Cathepsin G antibody.