



CA XIV Polyclonal Antibody

Catalog No	BYab-02519
Isotype	IgG
Reactivity	Human;Mouse;Rat
Applications	WB;ELISA
Gene Name	CA14
Protein Name	Carbonic anhydrase 14
Immunogen	The antiserum was produced against synthesized peptide derived from human CA14. AA range:161-210
Specificity	CA XIV Polyclonal Antibody detects endogenous levels of CA XIV protein.
Formulation	Liquid in PBS containing 50% glycerol, 0.5% BSA and 0.02% sodium azide.
Source	Polyclonal, Rabbit,IgG
Purification	The antibody was affinity-purified from rabbit antiserum by affinity-chromatography using epitope-specific immunogen.
Dilution	Western Blot: 1/500 - 1/2000. ELISA: 1/20000. Not yet tested in other applications.
Concentration	1 mg/ml
Purity	≥90%
Storage Stability	-20°C/1 year
Synonyms	CA14; Carbonic anhydrase 14; Carbonate dehydratase XIV; Carbonic anhydrase XIV; CA-XIV
Observed Band	34kD
Cell Pathway	Membrane ; Single-pass type I membrane protein .
Tissue Specificity	High expression in all parts of the central nervous system and lower expression in adult liver, heart, small intestine, colon, kidney, urinary bladder and skeletal muscle.
Function	catalytic activity:H(2)CO(3) = CO(2) + H(2)O.,cofactor:Zinc.,function:Reversible hydration of carbon dioxide.,similarity:Belongs to the alpha-carbonic anhydrase family.,tissue specificity:High expression in all parts of the central nervous system and lower expression in adult liver, heart, small intestine, colon, kidney, urinary bladder and skeletal muscle.,
Background	Carbonic anhydrases (CAs) are a large family of zinc metalloenzymes that catalyze the reversible hydration of carbon dioxide. They participate in a variety of biological processes, including respiration, calcification, acid-base balance,

Nanjing BYabscience technology Co.,Ltd



bone resorption, and the formation of aqueous humor, cerebrospinal fluid, saliva, and gastric acid. They show extensive diversity in tissue distribution and in their subcellular localization. CA XIV is predicted to be a type I membrane protein and shares highest sequence similarity with the other transmembrane CA isoform, CA XII; however, they have different patterns of tissue-specific expression and thus may play different physiologic roles. [provided by RefSeq, Jul 2008],

matters needing attention

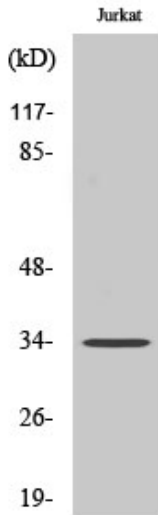
Avoid repeated freezing and thawing!

Usage suggestions

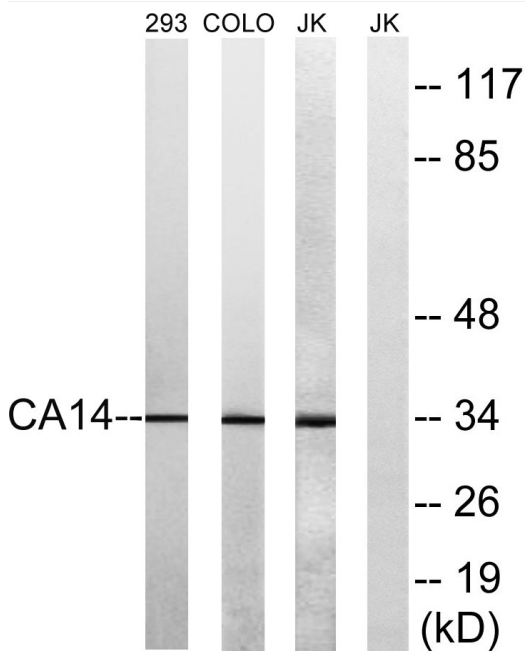
This product can be used in immunological reaction related experiments. For more information, please consult technical personnel.



Products Images



Western Blot analysis of various cells using CA XIV Polyclonal Antibody



Western blot analysis of lysates from Jurkat, COLO, and 293 cells, using CA14 Antibody. The lane on the right is blocked with the synthesized peptide.