



Atg16 Polyclonal Antibody

Catalog No	BYab-02500
Isotype	IgG
Reactivity	Human;Rat;Mouse;
Applications	WB;ELISA
Gene Name	ATG16L1
Protein Name	Autophagy-related protein 16-1
Immunogen	Synthesized peptide derived from Atg16 . at AA range: 60-140
Specificity	Atg16 Polyclonal Antibody detects endogenous levels of Atg16 protein.
Formulation	Liquid in PBS containing 50% glycerol, 0.5% BSA and 0.02% sodium azide.
Source	Polyclonal, Rabbit,IgG
Purification	The antibody was affinity-purified from rabbit antiserum by affinity-chromatography using epitope-specific immunogen.
Dilution	Western Blot: 1/500 - 1/2000. ELISA: 1/5000. Not yet tested in other applications.
Concentration	1 mg/ml
Purity	≥90%
Storage Stability	-20°C/1 year
Synonyms	ATG16L1; APG16L; Autophagy-related protein 16-1; APG16-like 1
Observed Band	70kD
Cell Pathway	Cytoplasm . Preautophagosomal structure membrane ; Peripheral membrane protein . Endosome membrane ; Peripheral membrane protein . Lysosome membrane ; Peripheral membrane protein . Recruited to omegasomes membranes by WIPI2 (By similarity). Omegasomes are endoplasmic reticulum connected strutures at the origin of preautophagosomal structures (By similarity). Localized to preautophagosomal structure (PAS) where it is involved in the membrane targeting of ATG5 (By similarity). Localizes also to discrete punctae along the ciliary axoneme (By similarity). Upon activation of non-canonical autophagy, recruited to single-membrane endolysosomal compartments (PubMed:29317426). .
Tissue Specificity	Brain,Colon,Epithelium,Fetal brain,Human lung,Mammary gland,Placenta,Small
Function	disease:Genetic variations in ATG16L1 are associated with susceptibility to inflammatory bowel disease type 10 (IBD10) [MIM:611081]. IBD is characterized by a chronic relapsing intestinal inflammation. IBD is subdivided into Crohn disease (CD) and ulcerative colitis phenotypes. IBD10 individuals show the

Nanjing BYabscience technology Co.,Ltd



phenotype characteristic to CD. It may involve any part of the gastrointestinal tract, but most frequently the terminal ileum and colon. CD is commonly classified as autoimmune disease.,function:Plays an essential role in autophagy.,sequence caution:Wrong choice of CDS.,similarity:Belongs to the WD repeat ATG16 family.,similarity:Contains 7 WD repeats.,subcellular location:Localized to preautophagosomal structure (PAS) where it is involved in the membrane targeting of ATG5.,subunit:Homooligomer. Interacts with ATG5. Part of either the minor and major complexes respectively composed of 4

Background

The protein encoded by this gene is part of a large protein complex that is necessary for autophagy, the major process by which intracellular components are targeted to lysosomes for degradation. Defects in this gene are a cause of susceptibility to inflammatory bowel disease type 10 (IBD10). Several transcript variants encoding different isoforms have been found for this gene.[provided by RefSeq, Jun 2010],

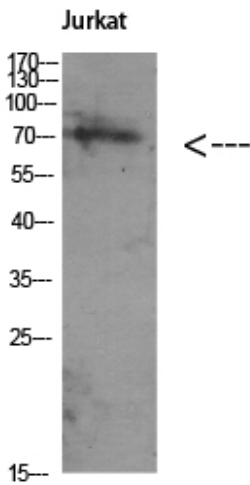
matters needing attention

Avoid repeated freezing and thawing!

Usage suggestions

This product can be used in immunological reaction related experiments. For more information, please consult technical personnel.

Products Images



Western Blot analysis of Jurkat using Antibody diluted at 1:1000. Secondary antibody(catalog#:RS0002) was diluted at 1:20000