



AOX1 Polyclonal Antibody

Catalog No	BYab-02498
Isotype	IgG
Reactivity	Human;Rat
Applications	WB;IHC;IF;ELISA
Gene Name	AOX1
Protein Name	Aldehyde oxidase
Immunogen	The antiserum was produced against synthesized peptide derived from human AOX1. AA range:521-570
Specificity	AOX1 Polyclonal Antibody detects endogenous levels of AOX1 protein.
Formulation	Liquid in PBS containing 50% glycerol, 0.5% BSA and 0.02% sodium azide.
Source	Polyclonal, Rabbit,IgG
Purification	The antibody was affinity-purified from rabbit antiserum by affinity-chromatography using epitope-specific immunogen.
Dilution	WB: 1/500 - 1/2000. IHC: 1/100 - 1/300. ELISA: 1/40000.. IF 1:50-200
Concentration	1 mg/ml
Purity	≥90%
Storage Stability	-20°C/1 year
Synonyms	AOX1; AO; Aldehyde oxidase
Observed Band	120kD
Cell Pathway	Cytoplasm .
Tissue Specificity	Abundant in liver, expressed in adipose tissue and at lower levels in lung, skeletal muscle, pancreas. In contrast to mice, no significant gender difference in AOX1 expression level (at protein level).
Function	catalytic activity:An aldehyde + H(2)O + O(2) = a carboxylic acid + H(2)O(2).,caution:Was originally (PubMed:8248161) thought to be a xanthine dehydrogenase.,cofactor:Binds 2 2Fe-2S clusters.,cofactor:FAD.,cofactor:Molybdopterin.,similarity:Belongs to the xanthine dehydrogenase family.,similarity:Contains 1 2Fe-2S ferredoxin-type domain.,similarity:Contains 1 FAD-binding PCMH-type domain.,subunit:Homodimer.,tissue specificity:Abundant in liver, lower levels in lung, skeletal muscle, pancreas. Undetected in heart, brain and kidney.,

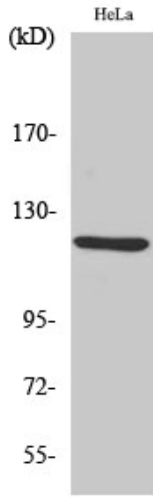
Nanjing BYabscience technology Co.,Ltd



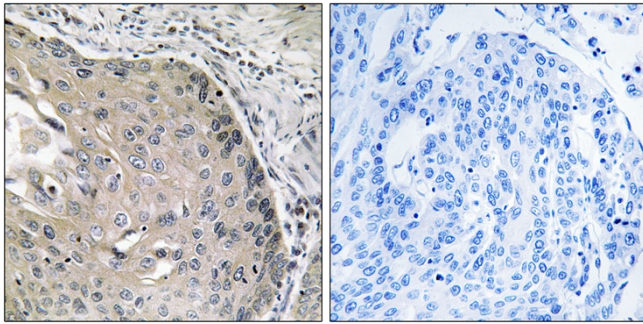
Background	Aldehyde oxidase produces hydrogen peroxide and, under certain conditions, can catalyze the formation of superoxide. Aldehyde oxidase is a candidate gene for amyotrophic lateral sclerosis. [provided by RefSeq, Jul 2008],
matters needing attention	Avoid repeated freezing and thawing!
Usage suggestions	This product can be used in immunological reaction related experiments. For more information, please consult technical personnel.



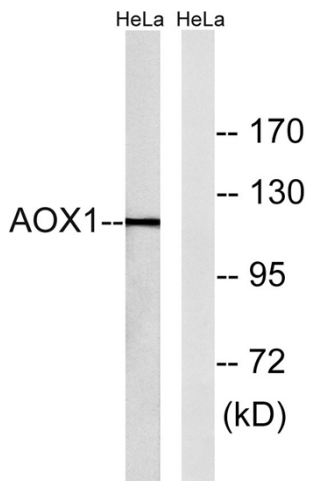
Products Images



Western Blot analysis of various cells using AOX1 Polyclonal Antibody diluted at 1:2000



Immunohistochemistry analysis of paraffin-embedded human lung carcinoma tissue, using AOX1 Antibody. The picture on the right is blocked with the synthesized peptide.



Western blot analysis of lysates from HeLa cells, using AOX1 Antibody. The lane on the right is blocked with the synthesized peptide.