



AGXT2L2 Polyclonal Antibody

Catalog No	BYab-02485
Isotype	IgG
Reactivity	Human;Mouse;Rat
Applications	WB;IHC;IF;ELISA
Gene Name	AGXT2L2
Protein Name	5-phosphohydroxy-L-lysine phospho-lyase
Immunogen	The antiserum was produced against synthesized peptide derived from human AGXT2L2. AA range:341-390
Specificity	AGXT2L2 Polyclonal Antibody detects endogenous levels of AGXT2L2 protein.
Formulation	Liquid in PBS containing 50% glycerol, 0.5% BSA and 0.02% sodium azide.
Source	Polyclonal, Rabbit,IgG
Purification	The antibody was affinity-purified from rabbit antiserum by affinity-chromatography using epitope-specific immunogen.
Dilution	WB: 1/500 - 1/2000. IHC: 1/100 - 1/300. ELISA: 1/10000.. IF 1:50-200
Concentration	1 mg/ml
Purity	≥90%
Storage Stability	-20°C/1 year
Synonyms	AGXT2L2; PP9286; 5-phosphohydroxy-L-lysine phospho-lyase; Alanine--glyoxylate aminotransferase 2-like 2
Observed Band	50kD
Cell Pathway	Mitochondrion .
Tissue Specificity	Brain,Muscle,Pancreas,Stomach,
Function	cofactor:Pyridoxal phosphate .,similarity:Belongs to the class-III pyridoxal-phosphate-dependent aminotransferase family.,subunit:Homotetramer.,
Background	5-phosphohydroxy-L-lysine phospho-lyase(PHYKPL) Homo sapiens This is a nuclear gene encoding a mitochondrial enzyme that catalyzes the conversion of 5-phosphonooxy-L-lysine to ammonia, inorganic phosphate, and 2-aminoadipate semialdehyde. Mutations in this gene may cause phosphohydroxylysineuria. Alternative splicing results in multiple transcript variants. [provided by RefSeq, May 2013],

Nanjing BYabscience technology Co.,Ltd



matters needing attention

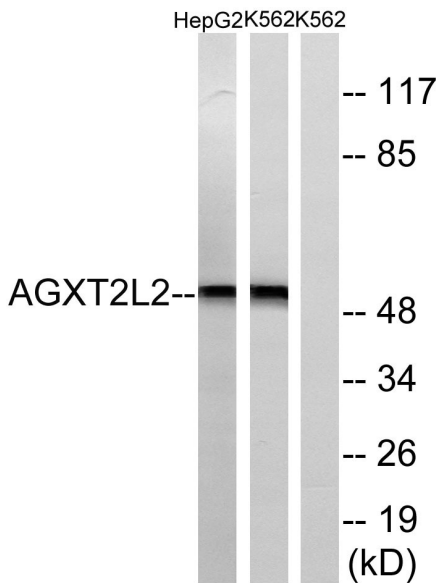
Avoid repeated freezing and thawing!

Usage suggestions

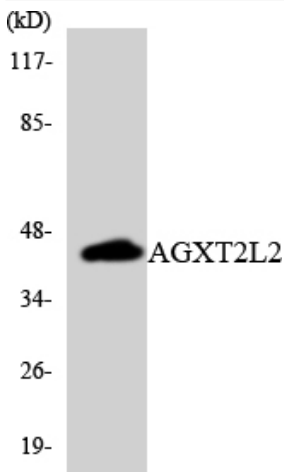
This product can be used in immunological reaction related experiments. For more information, please consult technical personnel.



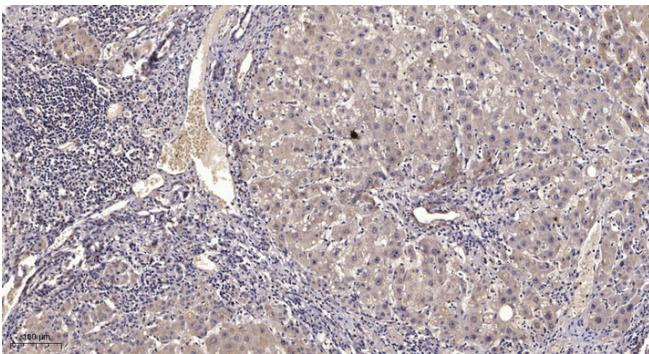
Products Images



Western blot analysis of lysates from K562 and HepG2 cells, using AGXT2L2 Antibody. The lane on the right is blocked with the synthesized peptide.



Western blot analysis of the lysates from HUVEC cells using AGXT2L2 antibody.



Immunohistochemical analysis of paraffin-embedded human liver cancer. 1, Antibody was diluted at 1:200(4° overnight). 2, Tris-EDTA, pH9.0 was used for antigen retrieval. 3, Secondary antibody was diluted at 1:200(room temperature, 45min).