



ADAMTS-7 Polyclonal Antibody

Catalog No	BYab-02483
Isotype	IgG
Reactivity	Human;Rat;Mouse;
Applications	IHC;IF;ELISA
Gene Name	ADAMTS7
Protein Name	A disintegrin and metalloproteinase with thrombospondin motifs 7
Immunogen	Synthesized peptide derived from ADAMTS-7 . at AA range: 150-230
Specificity	ADAMTS-7 Polyclonal Antibody detects endogenous levels of ADAMTS-7 protein.
Formulation	Liquid in PBS containing 50% glycerol, 0.5% BSA and 0.02% sodium azide.
Source	Polyclonal, Rabbit,IgG
Purification	The antibody was affinity-purified from rabbit antiserum by affinity-chromatography using epitope-specific immunogen.
Dilution	IHC: 1/100 - 1/300. ELISA: 1/40000.. IF 1:50-200
Concentration	1 mg/ml
Purity	≥90%
Storage Stability	-20°C/1 year
Synonyms	ADAMTS7; A disintegrin and metalloproteinase with thrombospondin motifs 7; ADAM-TS 7; ADAM-TS7; ADAMTS-7; COMPase
Observed Band	
Cell Pathway	Secreted, extracellular space, extracellular matrix . Also found associated with the external cell surface. .
Tissue Specificity	Expressed in heart, brain, placenta, lung, liver, skeletal muscle, kidney and pancreas. Detected in meniscus, bone, tendon, cartilage, synovium, fat and ligaments.
Function	cofactor: Binds 1 zinc ion per subunit.,domain: The conserved cysteine present in the cysteine-switch motif binds the catalytic zinc ion, thus inhibiting the enzyme. The dissociation of the cysteine from the zinc ion upon the activation-peptide release activates the enzyme.,domain: The spacer domain and the TSP type-1 domains are important for a tight interaction with the extracellular matrix.,function: Metalloprotease that may play a role in the degradation of COMP.,induction: Up-regulated in articular cartilage and synovium from arthritis patients.,PTM: May be cleaved by a furin endopeptidase (By similarity). The precursor is sequentially processed.,PTM: N-glycosylated.,PTM: O-glycosylated

Nanjing BYabscience technology Co.,Ltd



proteoglycan. Contains chondroitin sulfate.,similarity:Contains 1 disintegrin domain.,similarity:Contains 1 peptidase M12B domain.,similarity:Contains 1 PLAC domain.,similarity:Contains 8 TSP type-1 domains.

Background

The protein encoded by this gene is a member of the ADAMTS (a disintegrin and metalloproteinase with thrombospondin motifs) family. Members of this family share several distinct protein modules, including a propeptide region, a metalloproteinase domain, a disintegrin-like domain, and a thrombospondin type 1 (TS) motif. Individual members of this family differ in the number of C-terminal TS motifs, and some have unique C-terminal domains. The encoded preproprotein is proteolytically processed to generate the mature enzyme. This enzyme contains two C-terminal TS motifs and may regulate vascular smooth muscle cell (VSMC) migration. Mutations in this gene may be associated with susceptibility to coronary artery disease. [provided by RefSeq, Feb 2016],

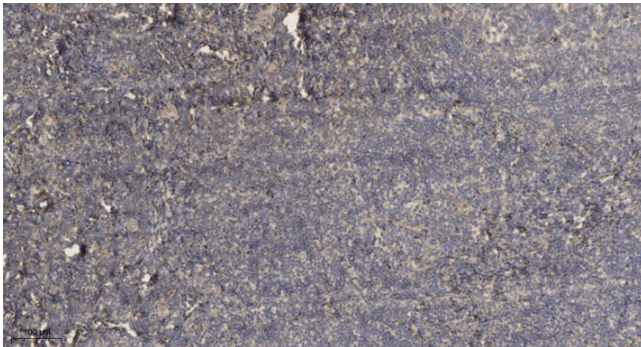
matters needing attention

Avoid repeated freezing and thawing!

Usage suggestions

This product can be used in immunological reaction related experiments. For more information, please consult technical personnel.

Products Images



Immunohistochemical analysis of paraffin-embedded human tonsil. 1, Antibody was diluted at 1:200(4° overnight). 2, Tris-EDTA,pH9.0 was used for antigen retrieval. 3,Secondary antibody was diluted at 1:200(room temperature, 30min).