



ADAMTS-12 Polyclonal Antibody

Catalog No	BYab-02479
Isotype	IgG
Reactivity	Human;Rat;Mouse;
Applications	IHC;IF;ELISA
Gene Name	ADAMTS12
Protein Name	A disintegrin and metalloproteinase with thrombospondin motifs 12
Immunogen	Synthesized peptide derived from ADAMTS-12 . at AA range: 1100-1180
Specificity	ADAMTS-12 Polyclonal Antibody detects endogenous levels of ADAMTS-12 protein.
Formulation	Liquid in PBS containing 50% glycerol, 0.5% BSA and 0.02% sodium azide.
Source	Polyclonal, Rabbit,IgG
Purification	The antibody was affinity-purified from rabbit antiserum by affinity-chromatography using epitope-specific immunogen.
Dilution	IHC: 1/100 - 1/300. ELISA: 1/20000.. IF 1:50-200
Concentration	1 mg/ml
Purity	≥90%
Storage Stability	-20°C/1 year
Synonyms	ADAMTS12; A disintegrin and metalloproteinase with thrombospondin motifs 12; ADAM-TS 12; ADAM-TS12; ADAMTS-12
Observed Band	
Cell Pathway	Secreted, extracellular space, extracellular matrix .
Tissue Specificity	Expressed in skeletal muscle and fat.
Function	cofactor: Binds 1 zinc ion per subunit., domain: The conserved cysteine present in the cysteine-switch motif binds the catalytic zinc ion, thus inhibiting the enzyme. The dissociation of the cysteine from the zinc ion upon the activation-peptide release activates the enzyme., domain: The spacer domain and the TSP type-1 domains are important for a tight interaction with the extracellular matrix., PTM: Subjected to an intracellular maturation process yielding a 120 kDa N-terminal fragment containing the metalloproteinase, disintegrin, one TSP type-1 and the Cys-rich domains and a 83 kDa C-terminal fragment containing the spacer 2 and four TSP type-1 domains., PTM: The precursor is cleaved by a furin endopeptidase., similarity: Contains 1 disintegrin domain., similarity: Contains 1 peptidase M12B domain., similarity: Contains 1 PLAC domain., similarity: Contains

Nanjing BYabscience technology Co.,Ltd



8 TSP type-1 domains.,tissue specificity:Exp

Background

This gene encodes a member of the ADAMTS (a disintegrin and metalloproteinase with thrombospondin motifs) protein family. Members of the family share several distinct protein modules, including a propeptide region, a metalloproteinase domain, a disintegrin-like domain, and a thrombospondin type 1 (TS-1) motif. Individual members of this family differ in the number of C-terminal TS-1 motifs, and some have unique C-terminal domains. The enzyme encoded by this gene contains eight TS-1 motifs. It may play roles in pulmonary cells during fetal development or in tumor processes through its proteolytic activity or as a molecule potentially involved in regulation of cell adhesion. [provided by RefSeq, Jul 2008],

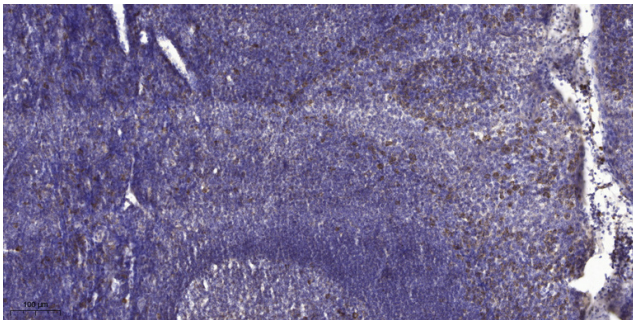
matters needing attention

Avoid repeated freezing and thawing!

Usage suggestions

This product can be used in immunological reaction related experiments. For more information, please consult technical personnel.

Products Images



Immunohistochemical analysis of paraffin-embedded human tonsil. 1, Antibody was diluted at 1:200(4° overnight). 2, Tris-EDTA,pH9.0 was used for antigen retrieval. 3,Secondary antibody was diluted at 1:200(room temperature, 30min).

Nanjing BYabscience technology Co.,Ltd