



ABHD9 Polyclonal Antibody

Catalog No	BYab-02460
Isotype	IgG
Reactivity	Human;Rat;Mouse;
Applications	WB;IHC;IF;ELISA
Gene Name	EPHX3
Protein Name	Epoxide hydrolase 3
Immunogen	The antiserum was produced against synthesized peptide derived from human ABHD9. AA range:101-150
Specificity	ABHD9 Polyclonal Antibody detects endogenous levels of ABHD9 protein.
Formulation	Liquid in PBS containing 50% glycerol, 0.5% BSA and 0.02% sodium azide.
Source	Polyclonal, Rabbit,IgG
Purification	The antibody was affinity-purified from rabbit antiserum by affinity-chromatography using epitope-specific immunogen.
Dilution	WB: 1/500 - 1/2000. IHC: 1/100 - 1/300. ELISA: 1/40000.. IF 1:50-200
Concentration	1 mg/ml
Purity	≥90%
Storage Stability	-20°C/1 year
Synonyms	EPHX3; ABHD9; Epoxide hydrolase 3; Abhydrolase domain-containing protein 9
Observed Band	38kD
Cell Pathway	Microsome membrane ; Single-pass membrane protein .
Tissue Specificity	
Function	
Background	EPHX3 (Epoxide Hydrolase 3) is a Protein Coding gene. GO annotations related to this gene include hydrolase activity. An important paralog of this gene is EPHX4.
matters needing attention	Avoid repeated freezing and thawing!

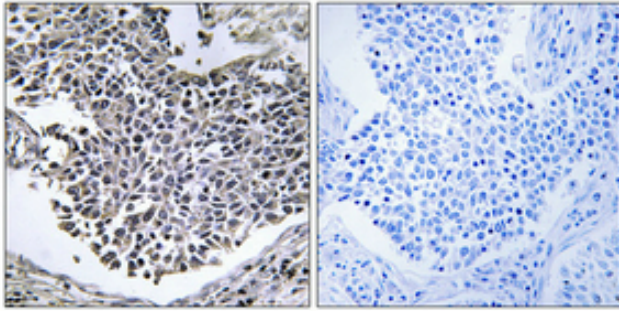
Nanjing BYabscience technology Co.,Ltd



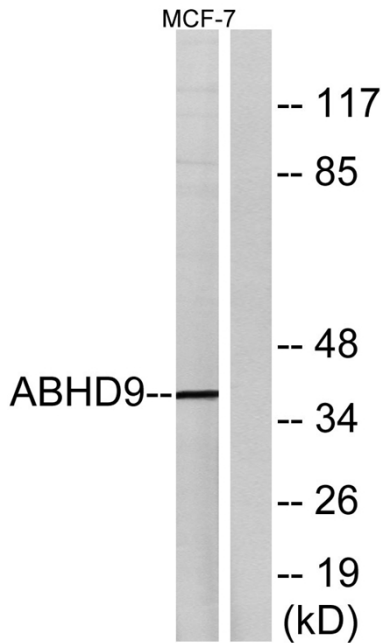
Usage suggestions

This product can be used in immunological reaction related experiments. For more information, please consult technical personnel.

Products Images



Immunohistochemical analysis of paraffin-embedded Human lung cancer. Antibody was diluted at 1:100(4° overnight). High-pressure and temperature Tris-EDTA, pH8.0 was used for antigen retrieval. Negative control (right) obtained from antibody was pre-absorbed by immunogen peptide.



Western blot analysis of lysates from MCF-7 cells, using ABHD9 Antibody. The lane on the right is blocked with the synthesized peptide.