



ABHD8 Polyclonal Antibody

Catalog No	BYab-02459
Isotype	IgG
Reactivity	Human;Mouse
Applications	WB;IHC;IF;ELISA
Gene Name	ABHD8
Protein Name	Abhydrolase domain-containing protein 8
Immunogen	The antiserum was produced against synthesized peptide derived from human ABHD8. AA range:291-340
Specificity	ABHD8 Polyclonal Antibody detects endogenous levels of ABHD8 protein.
Formulation	Liquid in PBS containing 50% glycerol, 0.5% BSA and 0.02% sodium azide.
Source	Polyclonal, Rabbit,IgG
Purification	The antibody was affinity-purified from rabbit antiserum by affinity-chromatography using epitope-specific immunogen.
Dilution	WB: 1/500 - 1/2000. IHC: 1/100 - 1/300. ELISA: 1/40000.. IF 1:50-200
Concentration	1 mg/ml
Purity	≥90%
Storage Stability	-20°C/1 year
Synonyms	ABHD8; Abhydrolase domain-containing protein 8
Observed Band	45kD
Cell Pathway	extracellular exosome,
Tissue Specificity	Brain,Embryo,Lymph,Muscle,
Function	similarity:Belongs to the AB hydrolase superfamily.,
Background	This gene is upstream of, and in a head-to-head orientation with the gene for the mitochondrial ribosomal protein L34. The predicted protein contains alpha/beta hydrolase fold and secretory lipase domains. [provided by RefSeq, Jul 2008],
matters needing attention	Avoid repeated freezing and thawing!

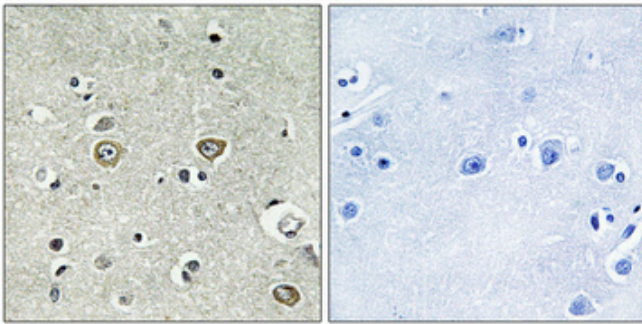
Nanjing BYabscience technology Co.,Ltd



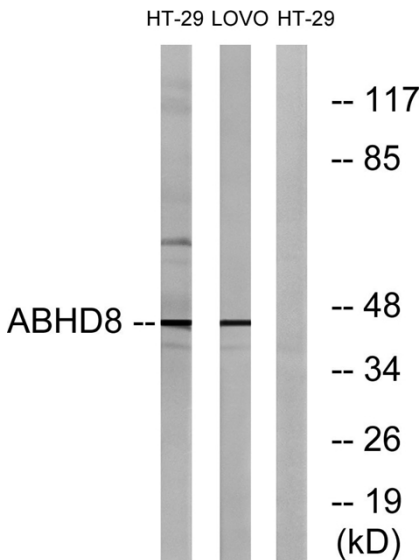
Usage suggestions

This product can be used in immunological reaction related experiments. For more information, please consult technical personnel.

Products Images



Immunohistochemical analysis of paraffin-embedded Human brain. Antibody was diluted at 1:100(4° overnight). High-pressure and temperature Tris-EDTA,pH8.0 was used for antigen retrieval. Negative contrl (right) obtained from antibody was pre-absorbed by immunogen peptide.



Western blot analysis of lysates from HT-29 and LOVO cells, using ABHD8 Antibody. The lane on the right is blocked with the synthesized peptide.