



# ABHD14B Polyclonal Antibody

<b>Catalog No</b>	BYab-02454
<b>Isotype</b>	IgG
<b>Reactivity</b>	Human;Rat
<b>Applications</b>	IHC;IF;ELISA
<b>Gene Name</b>	ABHD14B
<b>Protein Name</b>	Abhydrolase domain-containing protein 14B
<b>Immunogen</b>	The antiserum was produced against synthesized peptide derived from human ABHD14B. AA range:161-210
<b>Specificity</b>	ABHD14B Polyclonal Antibody detects endogenous levels of ABHD14B protein.
<b>Formulation</b>	Liquid in PBS containing 50% glycerol, 0.5% BSA and 0.02% sodium azide.
<b>Source</b>	Polyclonal, Rabbit,IgG
<b>Purification</b>	The antibody was affinity-purified from rabbit antiserum by affinity-chromatography using epitope-specific immunogen.
<b>Dilution</b>	IHC: 1/100 - 1/300. ELISA: 1/40000.. IF 1:50-200
<b>Concentration</b>	1 mg/ml
<b>Purity</b>	≥90%
<b>Storage Stability</b>	-20°C/1 year
<b>Synonyms</b>	ABHD14B; CIB; Abhydrolase domain-containing protein 14B; CCG1-interacting factor B
<b>Observed Band</b>	
<b>Cell Pathway</b>	Cytoplasm . Nucleus . Predominantly cytoplasmic. .
<b>Tissue Specificity</b>	Ubiquitous (PubMed:14672934). Detected in spleen, thymus, prostate, testis, ovary, small intestine, colon, peripheral blood leukocyte, heart, placenta, lung, liver, skeletal muscle, pancreas and kidney (PubMed:14672934).
<b>Function</b>	function:Has hydrolase activity towards p-nitrophenyl butyrate (in vitro). May activate transcription.,similarity:Belongs to the AB hydrolase superfamily. ABHD14 family.,subcellular location:Predominantly cytoplasmic.,subunit:May interact with TAF1.,tissue specificity:Ubiquitous. Detected in spleen, thymus, prostate, testis, ovary, small intestine, colon, peripheral blood leukocyte, heart, placenta, lung, liver, skeletal muscle, pancreas and kidney.,
<b>Background</b>	function:Has hydrolase activity towards p-nitrophenyl butyrate (in vitro). May activate transcription.,similarity:Belongs to the AB hydrolase superfamily.

Nanjing BYabscience technology Co.,Ltd



ABHD14 family.,subcellular location:Predominantly cytoplasmic.,subunit:May interact with TAF1.,tissue specificity:Ubiquitous. Detected in spleen, thymus, prostate, testis, ovary, small intestine, colon, peripheral blood leukocyte, heart, placenta, lung, liver, skeletal muscle, pancreas and kidney.,

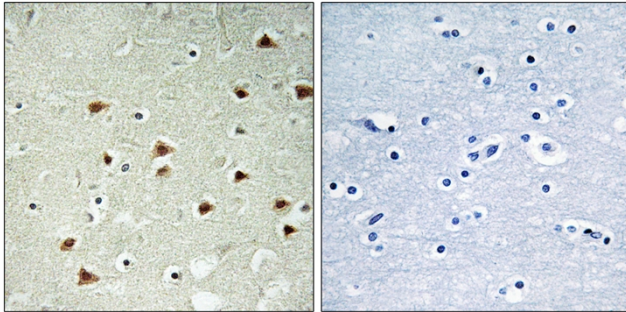
**matters needing attention**

Avoid repeated freezing and thawing!

**Usage suggestions**

This product can be used in immunological reaction related experiments. For more information, please consult technical personnel.

## Products Images



Immunohistochemistry analysis of paraffin-embedded human brain tissue, using ABHD14B Antibody. The picture on the right is blocked with the synthesized peptide.