



# ABHD14A Polyclonal Antibody

<b>Catalog No</b>	BYab-02453
<b>Isotype</b>	IgG
<b>Reactivity</b>	Human;Mouse;Rat
<b>Applications</b>	WB;ELISA
<b>Gene Name</b>	ABHD14A
<b>Protein Name</b>	Abhydrolase domain-containing protein 14A
<b>Immunogen</b>	The antiserum was produced against synthesized peptide derived from human ABHD14A. AA range:201-250
<b>Specificity</b>	ABHD14A Polyclonal Antibody detects endogenous levels of ABHD14A protein.
<b>Formulation</b>	Liquid in PBS containing 50% glycerol, 0.5% BSA and 0.02% sodium azide.
<b>Source</b>	Polyclonal, Rabbit,IgG
<b>Purification</b>	The antibody was affinity-purified from rabbit antiserum by affinity-chromatography using epitope-specific immunogen.
<b>Dilution</b>	Western Blot: 1/500 - 1/2000. ELISA: 1/40000. Not yet tested in other applications.
<b>Concentration</b>	1 mg/ml
<b>Purity</b>	≥90%
<b>Storage Stability</b>	-20°C/1 year
<b>Synonyms</b>	ABHD14A; Abhydrolase domain-containing protein 14A
<b>Observed Band</b>	30kD
<b>Cell Pathway</b>	Cytoplasm . Membrane ; Single-pass type II membrane protein .
<b>Tissue Specificity</b>	Brain,Lymph,
<b>Function</b>	caution:It is uncertain whether Met-1 or Met-30 is the initiator.,function:Possible role in granule neuron development.,similarity:Belongs to the AB hydrolase superfamily. ABHD14 family.,
<b>Background</b>	caution:It is uncertain whether Met-1 or Met-30 is the initiator.,function:Possible role in granule neuron development.,similarity:Belongs to the AB hydrolase superfamily. ABHD14 family.,
<b>matters needing attention</b>	Avoid repeated freezing and thawing!

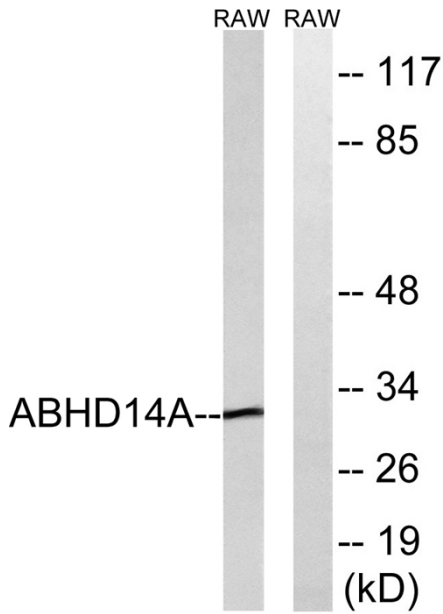
Nanjing BYabscience technology Co.,Ltd



**Usage suggestions**

This product can be used in immunological reaction related experiments. For more information, please consult technical personnel.

**Products Images**



Western blot analysis of lysates from RAW264.7 cells, using ABHD14A Antibody. The lane on the right is blocked with the synthesized peptide.