



# A1Up Polyclonal Antibody

<b>Catalog No</b>	BYab-02447
<b>Isotype</b>	IgG
<b>Reactivity</b>	Human;Mouse
<b>Applications</b>	WB;IHC;IF;ELISA
<b>Gene Name</b>	UBQLN4
<b>Protein Name</b>	Ubiquilin-4
<b>Immunogen</b>	The antiserum was produced against synthesized peptide derived from human UBQLN4. AA range:201-250
<b>Specificity</b>	A1Up Polyclonal Antibody detects endogenous levels of A1Up protein.
<b>Formulation</b>	Liquid in PBS containing 50% glycerol, 0.5% BSA and 0.02% sodium azide.
<b>Source</b>	Polyclonal, Rabbit,IgG
<b>Purification</b>	The antibody was affinity-purified from rabbit antiserum by affinity-chromatography using epitope-specific immunogen.
<b>Dilution</b>	WB: 1/500 - 1/2000. IHC: 1/100 - 1/300. ELISA: 1/40000.. IF 1:50-200
<b>Concentration</b>	1 mg/ml
<b>Purity</b>	≥90%
<b>Storage Stability</b>	-20°C/1 year
<b>Synonyms</b>	UBQLN4; C1orf6; CIP75; UBIN; Ubiquilin-4; Ataxin-1 interacting ubiquitin-like protein; A1Up; Ataxin-1 ubiquitin-like-interacting protein A1U; Connexin43-interacting protein of 75 kDa; CIP75
<b>Observed Band</b>	54kD
<b>Cell Pathway</b>	Nucleus . Cytoplasm . Chromosome . Endoplasmic reticulum . Cytoplasm, perinuclear region . Cytoplasmic vesicle, autophagosome . Colocalizes with the proteasome, both in nucleus and cytoplasm (PubMed:15280365). Exported from the nucleus following interaction with DES1/POST (PubMed:29666234). In response to DNA damage and phosphorylation at Ser-318 by ATM, localizes to the nucleus and is recruited to sites of DNA damage (PubMed:30612738). .
<b>Tissue Specificity</b>	Highly expressed in pancreas, kidney, skeletal muscle, heart and throughout the brain, and at lower levels in placenta, lung and liver.
<b>Function</b>	PTM:Phosphorylated upon DNA damage, probably by ATM or ATR.,similarity:Contains 1 UBA domain.,similarity:Contains 1 ubiquitin-like domain.,subcellular location:May associate with the endoplasmic reticulum.,subunit:Homodimer. Binds SCA1. Binds signal sequences of proteins

Nanjing BYabscience technology Co.,Ltd



that are targeted to the endoplasmic reticulum.,tissue specificity:Highly expressed in pancreas, kidney, skeletal muscle, heart and throughout the brain, and at lower levels in placenta, lung and liver.,

**Background**

PTM:Phosphorylated upon DNA damage, probably by ATM or ATR.,similarity:Contains 1 UBA domain.,similarity:Contains 1 ubiquitin-like domain.,subcellular location:May associate with the endoplasmic reticulum.,subunit:Homodimer. Binds SCA1. Binds signal sequences of proteins that are targeted to the endoplasmic reticulum.,tissue specificity:Highly expressed in pancreas, kidney, skeletal muscle, heart and throughout the brain, and at lower levels in placenta, lung and liver.,

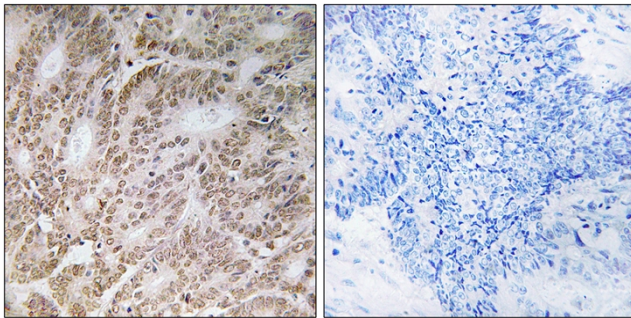
**matters needing attention**

Avoid repeated freezing and thawing!

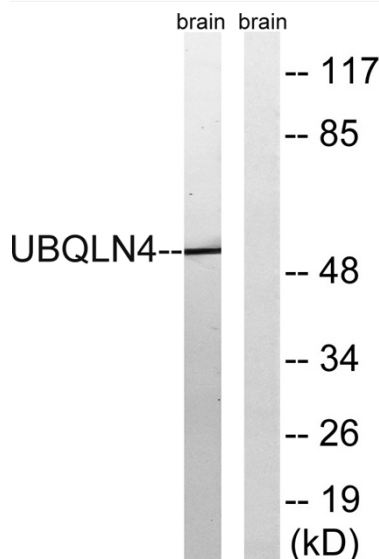
**Usage suggestions**

This product can be used in immunological reaction related experiments. For more information, please consult technical personnel.

**Products Images**



Immunohistochemistry analysis of paraffin-embedded human colon carcinoma tissue, using UBQLN4 Antibody. The picture on the right is blocked with the synthesized peptide.



Western blot analysis of lysates from mouse brain, using UBQLN4 Antibody. The lane on the right is blocked with the synthesized peptide.

**Nanjing BYabscience technology Co.,Ltd**