



TPH1 (phospho Ser58) Polyclonal Antibody

Catalog No	BYab-02416
Isotype	IgG
Reactivity	Human;Mouse;Rat
Applications	WB;IHC;IF;ELISA
Gene Name	TPH1
Protein Name	Tryptophan 5-hydroxylase 1
Immunogen	The antiserum was produced against synthesized peptide derived from human Tryptophan Hydroxylase around the phosphorylation site of Ser58. AA range:26-75
Specificity	Phospho-TPH1 (S58) Polyclonal Antibody detects endogenous levels of TPH1 protein only when phosphorylated at S58.
Formulation	Liquid in PBS containing 50% glycerol, 0.5% BSA and 0.02% sodium azide.
Source	Polyclonal, Rabbit,IgG
Purification	The antibody was affinity-purified from rabbit antiserum by affinity-chromatography using epitope-specific immunogen.
Dilution	WB: 1/500 - 1/2000. IHC: 1/100 - 1/300. ELISA: 1/10000.. IF 1:50-200
Concentration	1 mg/ml
Purity	≥90%
Storage Stability	-20°C/1 year
Synonyms	TPH1; TPH; TPRH; TRPH; Tryptophan 5-hydroxylase 1; Tryptophan 5-monooxygenase 1
Observed Band	51kD
Cell Pathway	cytosol,neuron projection,
Tissue Specificity	[Isoform 2]: Seems to be less widely expressed than isoform 1.
Function	catalytic activity:L-tryptophan + tetrahydrobiopterin + O(2) = 5-hydroxy-L-tryptophan + 4a-hydroxytetrahydrobiopterin.,cofactor:Fe(2+) ion.,pathway:Aromatic compound metabolism; serotonin biosynthesis; serotonin from L-tryptophan: step 1/2.,similarity:Belongs to the biopterin-dependent aromatic amino acid hydroxylase family.,similarity:Contains 1 ACT domain.,subunit:Multimer of identical subunits.,tissue specificity:Isoform 2 seems to be less widely expressed than isoform 1.,

Nanjing BYabscience technology Co.,Ltd



Background

This gene encodes a member of the aromatic amino acid hydroxylase family. The encoded protein catalyzes the first and rate limiting step in the biosynthesis of serotonin, an important hormone and neurotransmitter. Mutations in this gene have been associated with an elevated risk for a variety of diseases and disorders, including schizophrenia, somatic anxiety, anger-related traits, bipolar disorder, suicidal behavior, addictions, and others.[provided by RefSeq, Apr 2009],

matters needing attention

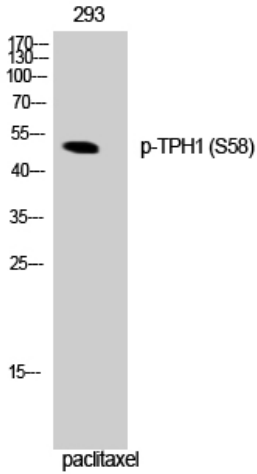
Avoid repeated freezing and thawing!

Usage suggestions

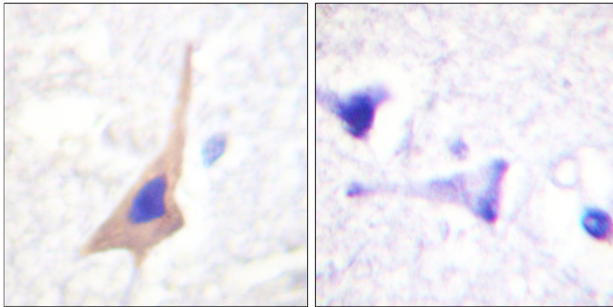
This product can be used in immunological reaction related experiments. For more information, please consult technical personnel.



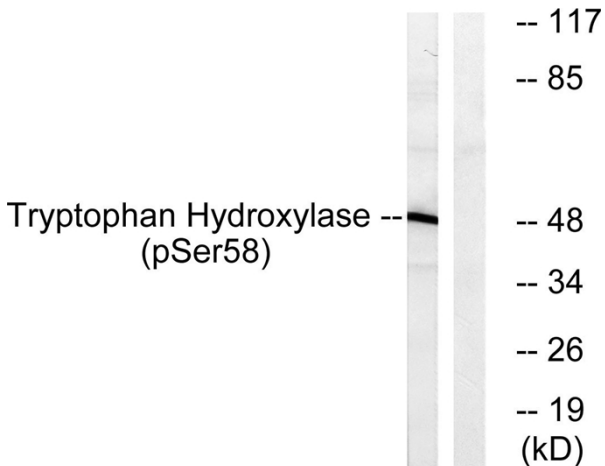
Products Images



Western Blot analysis of 293 cells using Phospho-TPH1 (S58) Polyclonal Antibody



Immunohistochemistry analysis of paraffin-embedded human brain, using Tryptophan Hydroxylase (Phospho-Ser58) Antibody. The picture on the right is blocked with the phospho peptide.



Western blot analysis of lysates from 293 cells treated with paclitaxel 1uM 24h, using Tryptophan Hydroxylase (Phospho-Ser58) Antibody. The lane on the right is blocked with the phospho peptide.