



Glycogen Synthase 1 (phospho Ser645) Polyclonal Antibody

| | |
|---------------------------|---|
| Catalog No | BYab-02408 |
| Isotype | IgG |
| Reactivity | Human;Mouse;Rat |
| Applications | WB;IHC;IF;ELISA |
| Gene Name | GYS1 |
| Protein Name | Glycogen [starch] synthase muscle |
| Immunogen | The antiserum was produced against synthesized peptide derived from human Glycogen Synthase around the phosphorylation site of Ser645. AA range:611-660 |
| Specificity | Phospho-Glycogen Synthase 1 (S645) Polyclonal Antibody detects endogenous levels of Glycogen Synthase 1 protein only when phosphorylated at S645. |
| Formulation | Liquid in PBS containing 50% glycerol, 0.5% BSA and 0.02% sodium azide. |
| Source | Polyclonal, Rabbit,IgG |
| Purification | The antibody was affinity-purified from rabbit antiserum by affinity-chromatography using epitope-specific immunogen. |
| Dilution | WB: 1/500 - 1/2000. IHC: 1/100 - 1/300. ELISA: 1/5000.. IF 1:50-200 |
| Concentration | 1 mg/ml |
| Purity | ≥90% |
| Storage Stability | -20°C/1 year |
| Synonyms | GYS1; GYS; Glycogen [starch] synthase; muscle |
| Observed Band | 83kD |
| Cell Pathway | cytosol,membrane,inclusion body, |
| Tissue Specificity | Endometrium,Heart,Kidney,Lymph,Muscle,Skin, |
| Function | catalytic activity:UDP-glucose ((1->4)-alpha-D-glucosyl)(n) = UDP + ((1->4)-alpha-D-glucosyl)(n+1).,disease:Defects in GYS1 are the cause of muscle glycogen storage disease type 0 (GSD0b) [MIM:611556]; also called muscle glycogen synthase deficiency. GSD0 is a metabolic disorder characterized by fasting hypoglycemia presenting in infancy or early childhood. The role of muscle glycogen is to provide critical energy during bursts of activity and sustained muscle work.,enzyme regulation:Allosteric activation by glucose-6-phosphate. Phosphorylation reduces the activity towards UDP-glucose. When in the non-phosphorylated state, glycogen synthase does not require |

Nanjing BYabscience technology Co.,Ltd



glucose-6-phosphate as an allosteric activator; when phosphorylated it does.,function:Transfers the glycosyl residue from UDP-Glc to the non-reducing end of alpha-1,4-glucan.,pathway:Glycan biosynthesis; glycogen biosynthesis.,similar

Background

The protein encoded by this gene catalyzes the addition of glucose monomers to the growing glycogen molecule through the formation of alpha-1,4-glycoside linkages. Mutations in this gene are associated with muscle glycogen storage disease. Alternatively spliced transcript variants encoding different isoforms have been found for this gene.[provided by RefSeq, Sep 2009],

matters needing attention

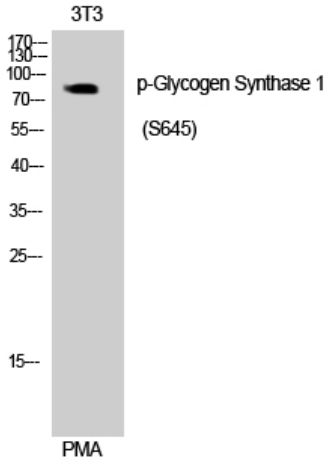
Avoid repeated freezing and thawing!

Usage suggestions

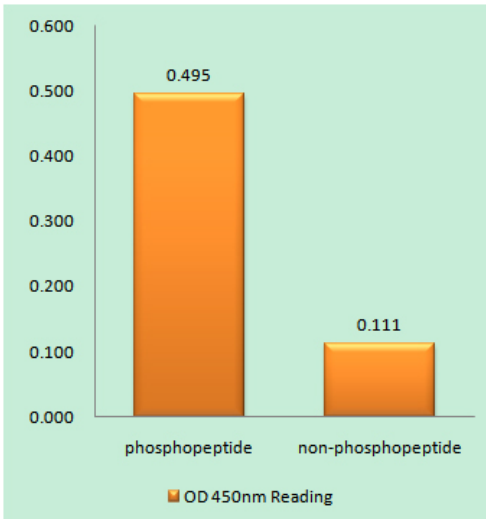
This product can be used in immunological reaction related experiments. For more information, please consult technical personnel.



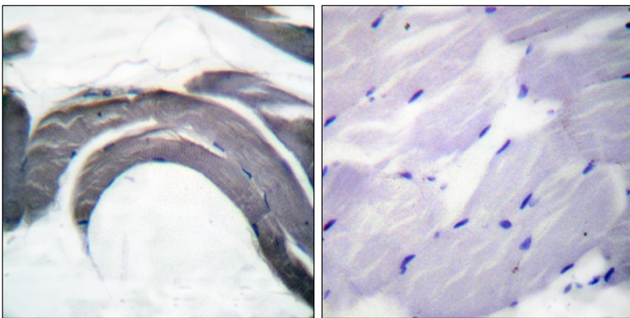
Products Images



Western Blot analysis of 293 cells using Phospho-Glycogen Synthase 1 (S645) Polyclonal Antibody

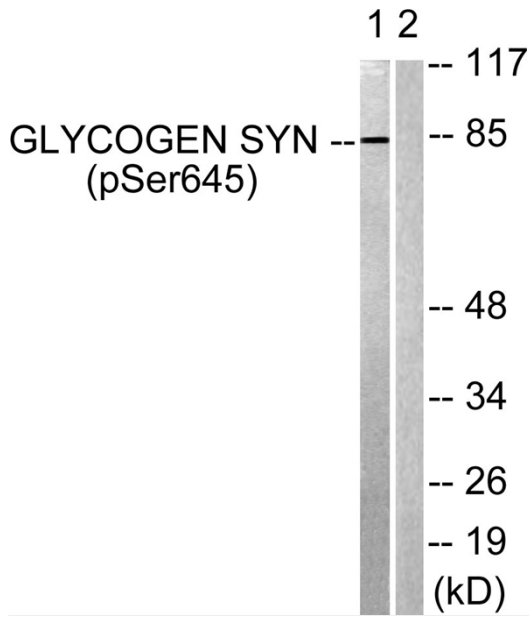


Enzyme-Linked Immunosorbent Assay (Phospho-ELISA) for Immunogen Phosphopeptide (Phospho-left) and Non-Phosphopeptide (Phospho-right), using Glycogen Synthase (Phospho-Ser645) Antibody



Immunohistochemistry analysis of paraffin-embedded human skeletal muscle, using Glycogen Synthase (Phospho-Ser645) Antibody. The picture on the right is blocked with the phospho peptide.

Nanjing BYabscience technology Co.,Ltd



Western blot analysis of lysates from NIH/3T3 cells treated with PMA 125ng/ml 30', using Glycogen Synthase (Phospho-Ser645) Antibody. The lane on the right is blocked with the phospho peptide.