



# BDH1 Monoclonal Antibody

<b>Catalog No</b>	BYab-02322
<b>Isotype</b>	IgG
<b>Reactivity</b>	Human;Mouse
<b>Applications</b>	WB;IHC;IF;ELISA
<b>Gene Name</b>	BDH1
<b>Protein Name</b>	D-beta-hydroxybutyrate dehydrogenase, mitochondrial
<b>Immunogen</b>	Purified recombinant fragment of human BDH1 expressed in E. Coli.
<b>Specificity</b>	BDH1 Monoclonal Antibody detects endogenous levels of BDH1 protein.
<b>Formulation</b>	Ascitic fluid containing 0.03% sodium azide,0.5% BSA, 50%glycerol.
<b>Source</b>	Monoclonal, Mouse
<b>Purification</b>	Affinity purification
<b>Dilution</b>	WB: 1/500 - 1/2000. IHC: 1/200 - 1/1000. ELISA: 1/10000.. IF 1:50-200
<b>Concentration</b>	1 mg/ml
<b>Purity</b>	≥90%
<b>Storage Stability</b>	-20°C/1 year
<b>Synonyms</b>	BDH1; BDH; D-beta-hydroxybutyrate dehydrogenase; mitochondrial; BDH; 3-hydroxybutyrate dehydrogenase
<b>Observed Band</b>	
<b>Cell Pathway</b>	Mitochondrion inner membrane . Mitochondrion matrix .
<b>Tissue Specificity</b>	Heart,Lung,Ovary,
<b>Function</b>	catalytic activity:(R)-3-hydroxybutanoate + NAD(+) = acetoacetate + NADH.,enzyme regulation:Requires phosphatidylcholine as an allosteric activator for enzymatic activity.,similarity:Belongs to the short-chain dehydrogenases/reductases (SDR) family.,subunit:Homotetramer.,
<b>Background</b>	This gene encodes a member of the short-chain dehydrogenase/reductase gene family. The encoded protein forms a homotetrameric lipid-requiring enzyme of the mitochondrial membrane and has a specific requirement for phosphatidylcholine for optimal enzymatic activity. The encoded protein catalyzes the interconversion of acetoacetate and (R)-3-hydroxybutyrate, the two major ketone bodies produced during fatty acid catabolism. Alternatively spliced transcript variants encoding the same protein have been described. [provided by RefSeq, Jul 2008],

Nanjing BYabscience technology Co.,Ltd



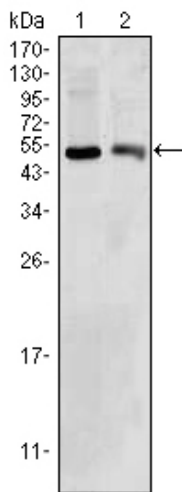
**matters needing attention**

Avoid repeated freezing and thawing!

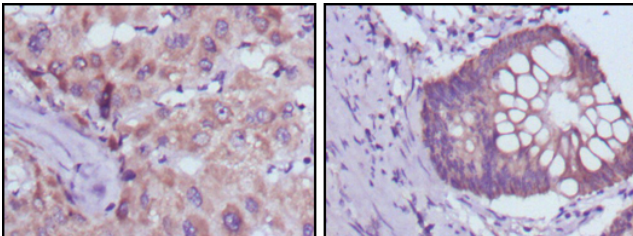
**Usage suggestions**

This product can be used in immunological reaction related experiments. For more information, please consult technical personnel.

**Products Images**



Western Blot analysis using BDH1 Monoclonal Antibody against HepG2 (1) and NIH/3T3 (2) cell lysate.



Immunohistochemistry analysis of paraffin-embedded human liver cancer (left) and colorectal cancer tissues (right) with DAB staining using BDH1 Monoclonal Antibody.

**Nanjing BYabscience technology Co.,Ltd**